

Anti-Somatostatin Receptor 1/SSTR1 Antibody

Catalog Number: PA1693

About SSTR1

SSTR1 (Somatostatin receptor type 1) is a protein that in humans is encoded by the SSTR1 gene. The SSTR1 gene is mapped to chromosome 14. Somatostatin acts at many sites to inhibit the release of many hormones and other secretory proteins. The biological effects of somatostatin are probably mediated by a family of G protein-coupled receptors that are expressed in a tissue-specific manner. The encoded protein is a member of the superfamily of somatostatin receptors having seven transmembrane segments, and is expressed in highest levels in jejunum and stomach.

Overview

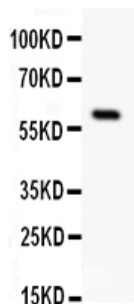
Product Name	Anti-Somatostatin Receptor 1/SSTR1 Antibody
Reactive Species	Human, Mouse, Rat
Description	Boster Bio Anti-Somatostatin Receptor 1/SSTR1 Antibody catalog # PA1693. Tested in IHC, WB applications. This antibody reacts with Human, Mouse, Rat.
Application	IHC, WB
Clonality	Polyclonal
Formulation	Each vial contains 5mg BSA, 0.9mg NaCl, 0.2mg Na ₂ HPO ₄ , 0.05mg Thimerosal, 0.05mg NaN ₃ .
Storage Instructions	Store at -20°C for one year from date of receipt. After reconstitution, at 4°C for one month. It can also be aliquotted and stored frozen at -20°C for six months. Avoid repeated freeze-thaw cycles.
Host	Rabbit
Uniprot ID	P30872

Technical Details

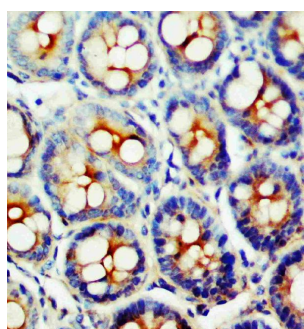
Immunogen	A synthetic peptide corresponding to a sequence at the C-terminus of human Somatostatin Receptor 1, identical to the related rat and mouse sequences.
Predicted Reactive Species	Hamster
Recommended Detection Systems	Boster recommends Enhanced Chemiluminescent Kit with anti-Rabbit IgG (EK1002) for Western blot, and HRP Conjugated anti-Rabbit IgG Super Vision Assay Kit (SV0002-1) for IHC(P).
Cross Reactivity	No cross-reactivity with other proteins
Isotype	Rabbit IgG
Form	Lyophilized
Concentration	Adding 0.2 ml of distilled water will yield a concentration of 500 ug/ml.

Purification	Immunogen affinity purified.
Suggested Dilutions	<p>Dilute the sample so that the expected range of concentrations fall within the detection range of this kit.</p> <p>If the expected range of concentration is unknown, a pilot test should be conducted to decide the optimal dilution ratio for your samples.</p> <p>Some PubMed article(s) citing the expression level of this target are as follows:</p> <p>Boster Bio's internal QC testing used:</p> <p>Immunohistochemistry (Paraffin-embedded Section), 0.5-1ug/ml, Rat, Human, Mouse, By Heat</p> <p>Western blot, 0.1-0.5ug/ml, Rat, Human, Mouse</p>

Anti-Somatostatin Receptor 1/SSTR1 Antibody (PA1693) Images



Anti-SSTR1 antibody, PA1693, Western blotting
All lanes: Anti SSTR1 (PA1693) at 0.5ug/ml
WB: Rat Intestine Tissue Lysate at 50ug
Predicted bind size: 43KD
Observed bind size: 60KD



Anti-SSTR1 antibody, PA1693, IHC(P)
IHC(P): Rat Intestine Tissue

1 Publications Citing This Product

1. PubMed ID: 23991955, Guo Rs, Shi Pd, Zhou J, Chen Yy. Asian Pac J Cancer Prev. 2013;14(7):4071-5. Somatostatin Receptors 3, 4 And 5 Play Important Roles In Gallbladder Cancer.

Visit bosterbio.com/anti-somatostatin-receptor-1-antibody-pa1693-boster.html to see all 1 publications.

Submit a product review to Biocompare.com

Submit a review of this product to Biocompare.com to receive a \$20 Amazon.com giftcard! Your reviews help your fellow scientists make the right decisions. Thank you for your contribution.



Anti-Somatostatin Receptor 1/SSTR1 Antibody