

Anti-ABCB6 Antibody Picoband®

Catalog Number: PA1723

About ABCB6

ABCB6, ATP-binding cassette sub-family B member 6, mitochondrial is a protein that in humans is encoded by the ABCB6 gene. The membrane-associated protein encoded by this gene is a member of the superfamily of ATP-binding cassette (ABC) transporters. ABC proteins transport various molecules across extra- and intra-cellular membranes. ABC genes are divided into seven distinct subfamilies (ABC1, MDR/TAP, MRP, ALD, OABP, GCN20, White). This protein is a member of the MDR/TAP subfamily. Members of the MDR/TAP subfamily are involved in multidrug resistance as well as antigen presentation. This half-transporter likely plays a role in mitochondrial function. Localized to 2q26, this gene is considered a candidate gene for lethal neonatal metabolic syndrome, a disorder of mitochondrial function.

Overview

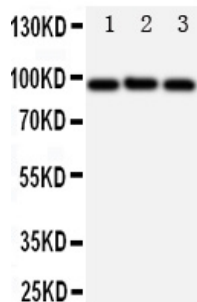
Product Name	Anti-ABCB6 Antibody Picoband®
Reactive Species	Human
Description	Boster Bio Anti-ABCB6 Antibody catalog # PA1723. Tested in IHC, ICC, WB applications. This antibody reacts with Human. The brand Picoband indicates this is a premium antibody that guarantees superior quality, high affinity, and strong signals with minimal background in Western blot applications. Only our best-performing antibodies are designated as Picoband, ensuring unmatched performance.
Application	IHC, ICC, WB
Clonality	Polyclonal
Formulation	Each vial contains antibody formulated with stabilizing components, 0.9mg NaCl, 0.2mg Na ₂ HPO ₄ , 0.05mg Thimerosal, 0.05mg NaN ₃ . *This antibody is supplied in a stabilized formulation. Compatibility with conjugation reactions depends on the chemistry of the conjugation method used. For conjugation methods that are not compatible with the stabilizing components present in this formulation, a carrier-free antibody format is required.
Storage Instructions	Store at -20°C for one year from date of receipt. After reconstitution, at 4°C for one month. It can also be aliquotted and stored frozen at -20°C for six months. Avoid repeated freeze-thaw cycles.
Host	Rabbit
Uniprot ID	Q9NP58

Technical Details

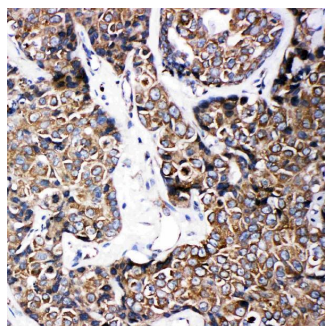
Immunogen	A synthetic peptide corresponding to a sequence at the C-terminus of human ABCB6.
Recommended Detection Systems	Boster recommends Enhanced Chemiluminescent Kit with anti-Rabbit IgG (EK1002) for Western blot, and HRP Conjugated anti-Rabbit IgG Super Vision Assay Kit (SV0002-1) for IHC(P) and ICC.

Cross Reactivity	No cross-reactivity with other proteins
Isotype	Rabbit IgG
Form	Lyophilized
Concentration	Adding 0.2 ml of distilled water will yield a concentration of 500 ug/ml.
Purification	Immunogen affinity purified.
Suggested Dilutions	Immunocytochemistry , 0.5-1ug/ml, Human, - Immunohistochemistry (Paraffin-embedded Section), 0.5-1ug/ml, Human Western blot, 0.1-0.5ug/ml, Human

Anti-ABCB6 Antibody Picoband® (PA1723) Images



Anti-ABCB6 antibody, PA1723, Western blotting All lanes:
Anti ABCB6 (PA1723) at 0.5ug/ml Lane 1: HELA Whole Cell
Lysate at 40ug Lane 2: MCF-7 Whole Cell Lysate at 40ug
Lane 3: A549 Whole Cell Lysate at 40ug Predicted bind size:
94KD Observed bind size: 94KD



Anti-ABCB6 antibody, PA1723, IHC(P)IHC(P): Human
Mammary Cancer Tissue

1 Publications Citing This Product

1. PubMed ID: 10.3390/cells10102549, New Insights into the Pivotal Role of Iron/Heme Metabolism in TLR4/NF-kappaB Signaling-Mediated Inflammatory Responses in Human Monocytes

Visit bosterbio.com/anti-abcb6-antibody-pa1723-boster.html to see all 1 publications.

Submit a product review to Biocompare.com

Submit a review of this product to Biocompare.com to receive a \$20 Amazon.com giftcard! Your reviews help your fellow scientists make the right decisions. Thank you for your contribution.



Anti-ABCB6 Antibody

For Research Use Only. Not for use in diagnostic procedures.