

## Anti-Toll-like receptor 7 TLR7 Antibody Picoband®

Catalog Number: PA1733

### About TLR7

TLR7 (Toll-like receptor 7) is protein that in humans is encoded by the TLR7 gene. Orthologs are found in mammals and birds. TLR7 is a member of the Toll-like receptor (TLR) family which plays a fundamental role in pathogen recognition and activation of innate immunity. TLRs are highly conserved from Drosophila to humans and share structural and functional similarities. They recognize pathogen-associated molecular patterns (PAMPs) that are expressed on infectious agents, and mediate the production of cytokines necessary for the development of effective immunity. The various TLRs exhibit different patterns of expression. This gene is predominantly expressed in lung, placenta, and spleen, and lies in close proximity to another family member, TLR8, on human chromosome X. TLR7 recognises single stranded RNA in endosomes, which is a common feature of viral genomes which are internalised by macrophages.

### Overview

Product Name	Anti-Toll-like receptor 7 TLR7 Antibody Picoband®
Reactive Species	Human, Mouse, Rat
Description	Boster Bio Anti-Toll-like receptor 7 TLR7 Antibody catalog # PA1733. Tested in IHC, WB applications. This antibody reacts with Human, Mouse, Rat. The brand Picoband indicates this is a premium antibody that guarantees superior quality, high affinity, and strong signals with minimal background in Western blot applications. Only our best-performing antibodies are designated as Picoband, ensuring unmatched performance.
Application	IHC, WB
Clonality	Polyclonal
Formulation	Each vial contains antibody formulated with stabilizing components, 0.9mg NaCl, 0.2mg Na <sub>2</sub> HPO <sub>4</sub> , 0.05mg Thimerosal, 0.05mg NaN <sub>3</sub> . *This antibody is supplied in a stabilized formulation. Compatibility with conjugation reactions depends on the chemistry of the conjugation method used. For conjugation methods that are not compatible with the stabilizing components present in this formulation, a carrier-free antibody format is required.
Storage Instructions	Store at -20°C for one year from date of receipt. After reconstitution, at 4°C for one month. It can also be aliquotted and stored frozen at -20°C for six months. Avoid repeated freeze-thaw cycles.
Host	Rabbit
Uniprot ID	Q9NYK1

### Technical Details

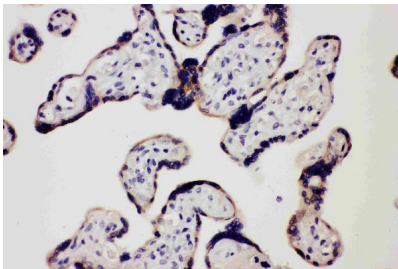
Immunogen	A synthetic peptide corresponding to a sequence at the C-terminus of human TLR7, different from the related rat and mouse sequences by one amino acid.
Recommended Detection Systems	Boster recommends Enhanced Chemiluminescent Kit with anti-Rabbit IgG (EK1002) for Western

	blot, and HRP Conjugated anti-Rabbit IgG Super Vision Assay Kit (SV0002-1) for IHC(P).
Cross Reactivity	No cross-reactivity with other proteins
Isotype	Rabbit IgG
Form	Lyophilized
Concentration	Adding 0.2 ml of distilled water will yield a concentration of 500 ug/ml.
Purification	Immunogen affinity purified.
Suggested Dilutions	Immunohistochemistry (Paraffin-embedded Section), 0.5-1ug/ml, Human, Rat, Mouse Western blot, 0.1-0.5ug/ml, Human, Rat, Mouse

## Anti-Toll-like receptor 7 TLR7 Antibody Picoband® (PA1733) Images



Anti-TLR7 antibody, PA1733, Western blotting  
Lane 1: Rat Spleen Tissue Lysate  
Lane 2: Rat Liver Tissue Lysate  
Lane 3: U87 Cell Lysate  
Lane 4: A549 Cell Lysate



Anti-TLR7 antibody, PA1733, IHC(P)  
IHC(P): Human Placenta Tissue



Anti-TLR7 antibody, PA1733, IHC(P)  
IHC(P): Rat Spleen Tissue

### Submit a product review to Biocompare.com

Submit a review of this product to Biocompare.com to receive a \$20 Amazon.com giftcard! Your reviews help your fellow scientists make the right decisions. Thank you for your contribution.



Anti-Toll-like receptor 7 TLR7 Antibody

For Research Use Only. Not for use in diagnostic procedures.