

Anti-Glucose Transporter 5 GLUT5/SLC2A5 Antibody

Catalog Number: PA1737

About Slc2a5

GLUT5 (Glucose transporter 5), also known as SLC2A5, is a fructose transporter expressed on the apical border of enterocytes in the small intestine. The GLUT5 gene is located on chromosome 1. GLUT5 allows for fructose to be transported from the intestinal lumen into the enterocyte by facilitated diffusion due to fructose's high concentration in the intestinal lumen. GLUT5 is also expressed in skeletal muscle, testis, kidney, fat tissue, and brain. Fructose malabsorption or Dietary Fructose Intolerance is a dietary disability of the small intestine, where the amount of fructose carrier in enterocytes is deficient. In humans the GLUT5 protein is encoded by the SLC2A5 gene.

Overview

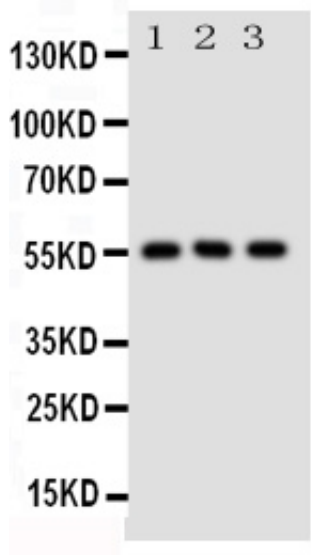
Product Name	Anti-Glucose Transporter 5 GLUT5/SLC2A5 Antibody
Reactive Species	Mouse, Rat
Description	Rabbit IgG polyclonal antibody for Solute carrier family 2, facilitated glucose transporter member 5 (SLC2A5) detection. Tested with WB, IHC-P, IHC-F in Mouse; Rat.
Application	IHC-P, IHC-F, WB
Clonality	Polyclonal
Formulation	Each vial contains 5mg BSA, 0.9mg NaCl, 0.2mg Na ₂ HPO ₄ , 0.05mg Thimerosal, 0.05mg NaN ₃ .
Storage Instructions	At -20°C for one year. After reconstitution, at 4°C for one month. It can also be aliquotted and stored frozen at -20°C for a longer time. Avoid repeated freezing and thawing.
Host	Rabbit
Uniprot ID	Q9WV38

Technical Details

Immunogen	A synthetic peptide corresponding to a sequence in the middle region of mouse SLC2A5 (232-251aa ALQTLRGWKDVHLEMEEIRK), different from the related rat sequence by two amino acids.
-----------	--

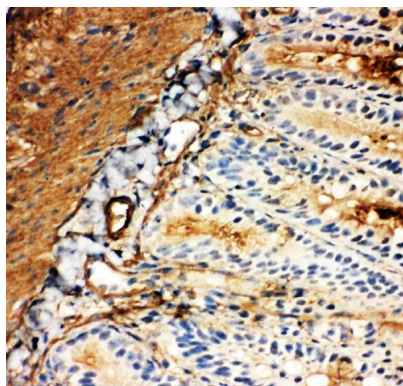
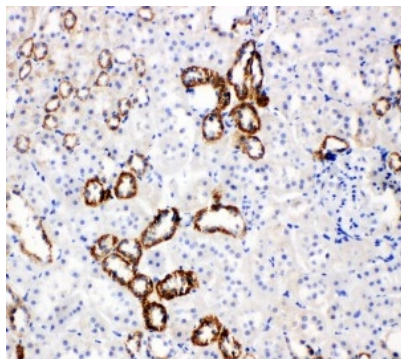
Recommended Detection Systems	Boster recommends Enhanced Chemiluminescent Kit with anti-Rabbit IgG (EK1002) for Western blot, and HRP Conjugated anti-Rabbit IgG Super Vision Assay Kit (SV0002-1) for IHC(P) and IHC(F).
Cross Reactivity	No cross reactivity with other proteins
Isotype	N/A
Form	Lyophilized
Concentration	Add 0.2ml of distilled water will yield a concentration of 500ug/ml.
Purification	Immunogen affinity purified.
Suggested Dilutions	Immunohistochemistry(Paraffin-embedded Section), 0.5-1µg/ml, Mouse, Rat, By Heat Immunohistochemistry(Frozen Section), 0.5-1µg/ml, Rat, Mouse Western blot, 0.1-0.5µg/ml, Mouse, Rat For protocols please visit https://www.bosterbio.com/protocol-and-troubleshooting/

Anti-Glucose Transporter 5 GLUT5/SLC2A5 Antibody (PA1737) Images



Anti-SLC2A5 antibody, PA1737, Western blotting
All lanes: Anti SLC2A5 (PA1737) at 0.5ug/ml
Lane 1: Rat Kidney Tissue Lysate at 50ug
Lane 2: Rat Liver Tissue Lysate at 50ug
Lane 3: Mouse Kidney Tissue Lysate at 50ug
Predicted bind size: 55KD
Observed bind size: 55KD

Anti-SLC2A5 antibody, PA1737, IHC(P)
IHC(P): Rat Kidney Tissue



Anti-SLC2A5 antibody, PA1737, IHC(F)
IHC(F): Rat Intestine Tissue

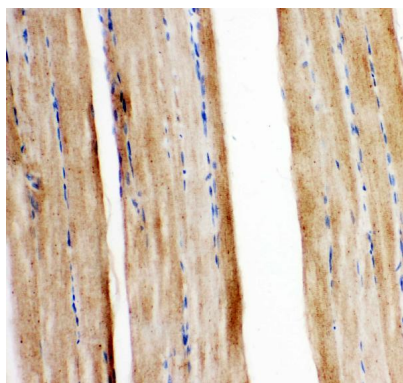


Figure 4. IHC analysis of GLUT5 using anti- GLUT5 antibody (PA1737).

GLUT5 was detected in paraffin-embedded section of mouse ggj3249 tissues. Heat mediated antigen retrieval was performed in citrate buffer (pH6, epitope retrieval solution) for 20 mins. The tissue section was blocked with 10% goat serum. The tissue section was then incubated with 1 μ g/ml rabbit anti- GLUT5 Antibody (PA1737) overnight at 4 $^{\circ}$ C. Biotinylated goat anti-rabbit IgG was used as secondary antibody and incubated for 30 minutes at 37 $^{\circ}$ C. The tissue section was developed using Streptavidin-Biotin-Complex (SABC)(Catalog # SA1022) with DAB as the chromogen.

Submit a product review to Biocompare.com

Submit a review of this product to Biocompare.com to receive a \$20 Amazon giftcard! Your reviews help your fellow scientists make the right decisions. Thank you for your contribution.

