

## Anti-CD2/CD2 Antibody

Catalog Number: PA1743

### About Cd2

CD2 (cluster of differentiation 2) is a cell adhesion molecule found on the surface of T cells and natural killer (NK) cells. It has also been called T-cell surface antigen T11/Leu-5, LFA-2, LFA-3 receptor, erythrocyte receptor and rosette receptor. Monoclonal antibodies directed against CD2 inhibit the formation of rosettes with sheep erythrocytes, indicating that CD2 is the erythrocyte receptor or is closely associated with it. It is one of the earliest T-cell markers, being present on more than 95% of thymocytes; it is also found on some natural killer cells but not on B lymphocytes. Due to its structural characteristics, CD2 is a member of the immunoglobulin superfamily; it possesses two immunoglobulin-like domains in its extracellular portion. The localization of CD2 to 1p13 was established by in situ hybridization. By Southern blotting of DNA from a panel of somatic cell hybrids, Clayton et al. (1988) assigned the CD2 gene to human chromosome 1 and murine chromosome 3. CD2 interacts with other adhesion molecules, such as lymphocyte function-associated antigen-3 (LFA-3/CD58) in humans, or CD48 in rodents, which are expressed on the surfaces of other cells. With the use of transgenic mice, such an LCR was identified within the 3-prime flanking region of the human CD2 gene.

### Overview

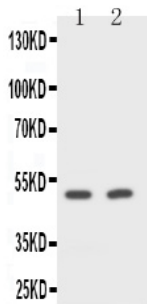
|                      |   |
|----------------------|---|
| Product Name         | Anti-CD2/CD2 Antibody   |
| Reactive Species     | Mouse, Rat  |
| Description          | Boster Bio Anti-CD2/CD2 Antibody catalog # PA1743. Tested in WB applications. This antibody reacts with Mouse, Rat.   |
| Application          | WB  |
| Clonality            | Polyclonal  |
| Formulation          | Each vial contains 5mg BSA, 0.9mg NaCl, 0.2mg Na <sub>2</sub> HPO <sub>4</sub> , 0.05mg Thimerosal, 0.05mg NaN <sub>3</sub> .   |
| Storage Instructions | Store at -20°C for one year from date of receipt. After reconstitution, at 4°C for one month. It can also be aliquotted and stored frozen at -20°C for six months. Avoid repeated freeze-thaw cycles. |
| Host                 | Rabbit  |
| Uniprot ID           | P08920  |

### Technical Details

|                               |  |
|-------------------------------|--|
| Immunogen                     | A synthetic peptide corresponding to a sequence in the middle region of mouse CD2 (224-242aa FIFCICKRRKRNRKDEE), different from the related rat sequence by two amino acids. |
| Recommended Detection Systems | Boster recommends Enhanced Chemiluminescent Kit with anti-Rabbit IgG (EK1002) for Western blot.  |
| Cross Reactivity              | No cross reactivity with other proteins  |
| Isotype                       | Rabbit IgG   |

|                     |   |
|---------------------|---|
| Form                | Lyophilized   |
| Concentration       | Adding 0.2 ml of distilled water will yield a concentration of 500 µg/ml.   |
| Purification        | Immunogen affinity purified.  |
| Suggested Dilutions | <p>Dilute the sample so that the expected range of concentrations fall within the detection range of this kit.</p> <p>If the expected range of concentration is unknown, a pilot test should be conducted to decide the optimal dilution ratio for your samples.</p> <p>Some PubMed article(s) citing the expression level of this target are as follows:<br/>Boster Bio's internal QC testing used Western blot, 0.1-0.5 µg/ml, Mouse, Rat</p> <p>For protocols please visit <a href="https://www.bosterbio.com/protocol-and-troubleshooting/">https://www.bosterbio.com/protocol-and-troubleshooting/</a></p> |

## Anti-CD2/CD2 Antibody (PA1743) Images



Anti-CD2 antibody, PA1743, Western blotting  
Lane 1: Rat Spleen Cell Lysate  
Lane 2: NIH/3T3 Cell Lysate

## Submit a product review to Biocompare.com

Submit a review of this product to Biocompare.com to receive a \$20 Amazon giftcard! Your reviews help your fellow scientists make the right decisions. Thank you for your contribution.



Anti-CD2/CD2 Antibody