

Anti-Eph receptor A2/EPHA2 Antibody

Catalog Number: PA1744

About EPHA2

EPHA2 (ephrin type-A receptor 2) also known as ECK, is a protein that in humans is encoded by the EPHA2 gene. This gene belongs to the ephrin receptor subfamily of the protein-tyrosine kinase family. Receptors in the EPH subfamily typically have a single kinase domain and an extracellular region containing a Cys-rich domain and 2 fibronectin type III repeats. By somatic cell hybrid analysis and fluorescence in situ hybridization, the EPHA2 gene is mapped to chromosome 1p36.1. By screening a HeLa cell cDNA library with degenerate oligonucleotides based on highly conserved regions of receptor protein-tyrosine kinases, Lindberg and Hunter isolated cDNAs encoding EPHA2, which they called ECK. EPHA2 was readily detectable in human lens fiber cells using immunoblot and immunohistochemistry. EGFR and EPHA2 mediated HCV entry by regulating CD81-claudin-1 (CLDN1) coreceptor associations and viral glycoprotein-dependent membrane fusion.

Overview

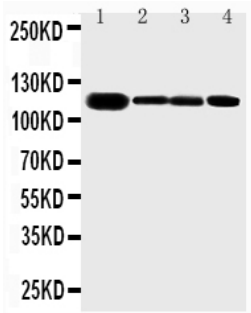
Product Name	Anti-Eph receptor A2/EPHA2 Antibody
Reactive Species	Human, Mouse, Rat
Description	Boster Bio Anti-Eph receptor A2/EPHA2 Antibody catalog # PA1744. Tested in IHC, WB applications. This antibody reacts with Human, Mouse, Rat.
Application	IHC, WB
Clonality	Polyclonal G9
Formulation	Each vial contains 5mg BSA, 0.9mg NaCl, 0.2mg Na ₂ HPO ₄ , 0.05mg Thimerosal, 0.05mg NaN ₃ .
Storage Instructions	Store at -20°C for one year from date of receipt. After reconstitution, at 4°C for one month. It can also be aliquotted and stored frozen at -20°C for six months. Avoid repeated freeze-thaw cycles.
Host	Rabbit
Uniprot ID	P29317

Technical Details

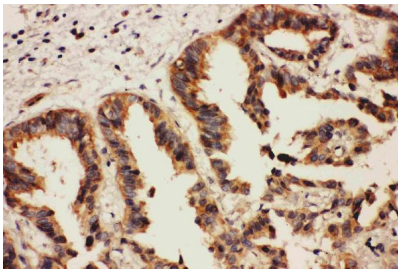
Immunogen	A synthetic peptide corresponding to a sequence at the C-terminus of human Eph receptor A2, identical to the related rat and mouse sequences.
Predicted Reactive Species	Hamster
Recommended Detection Systems	Boster recommends Enhanced Chemiluminescent Kit with anti-Rabbit IgG (EK1002) for Western blot, and HRP Conjugated anti-Rabbit IgG Super Vision Assay Kit (SV0002-1) for IHC(P).
Cross Reactivity	No cross reactivity with other proteins
Form	Lyophilized

Concentration	Add 0.2ml of distilled water will yield a concentration of 500ug/ml.
Purification	Immunogen affinity purified.
Suggested Dilutions	<p>Dilute the sample so that the expected range of concentrations fall within the detection range of this kit.</p> <p>If the expected range of concentration is unknown, a pilot test should be conducted to decide the optimal dilution ratio for your samples.</p> <p>Some PubMed article(s) citing the expression level of this target are as follows:</p> <p>Boster Bio's internal QC testing used:</p> <p>Immunohistochemistry (Paraffin-embedded Section), 0.5-1ug/ml, Human, Mouse, Rat, By Heat</p> <p>Western blot, 0.1-0.5ug/ml, Human, Rat, Mouse</p>

Anti-Eph receptor A2/EPHA2 Antibody (PA1744) Images



Anti-Eph receptor A2 antibody, PA1744, Western blotting
Lane 1: Rat Ovary Tissue Lysate
Lane 2: HELA Cell Lysate
Lane 3: MCF-7 Cell Lysate
Lane 4: COLO320 Cell Lysate



Anti-Eph receptor A2 antibody, PA1744, IHC(P)
IHC(P): Human Lung Cancer Tissue

1 Publications Citing This Product

1. PubMed ID: 22173506, Yang Y, Min J. J Huazhong Univ Sci Technolog Med Sci. 2011 Dec;31(6):824-7. Doi: 10.1007/S11596-011-0684-9. Epub 2011 Dec 16. Effect Of Ephrin-A1/Epha2 On Invasion Of Trophoblastic Cells.

Visit bosterbio.com/anti-eph-receptor-a2-antibody-pa1744-boster.html to see all 1 publications.

Submit a product review to Biocompare.com

Submit a review of this product to Biocompare.com to receive a \$20 Amazon.com giftcard! Your reviews help your fellow scientists make the right decisions. Thank you for your contribution.



Anti-Eph receptor A2/EPHA2 Antibody