

## Anti-Kallikrein 6/KLK6 Antibody Picoband®

Catalog Number: PA1767

### About KLK6

KLK6 (Kallikrein-related peptidase 6), also called KALLIKREIN 6, NEUROSIN, PROTEASE M, ZYME or PRSS9, is a protein that in humans is encoded by the KLK6 gene. This gene is one of the fifteen kallikrein subfamily members located in a cluster on chromosome 19. The encoded enzyme is regulated by steroid hormones. Northern blot analysis revealed that the PRSS9 mRNA was expressed in several primary tumors and cell lines from mammary, prostate, and ovarian cancers, but was not detected in any metastases of these cancers. The KLK6 gene is mapped on 19q13.41. In tissue culture, the enzyme has been found to generate amyloidogenic fragments from the amyloid precursor protein, suggesting a potential for involvement in Alzheimer's disease. Upon cellular stress, neurosin was released from mitochondria to the cytosol, which resulted in the increase of degraded alpha-synuclein species. Neurosin may play a significant role in physiologic alpha-synuclein degradation and also in the pathogenesis of synucleinopathies.

### Overview

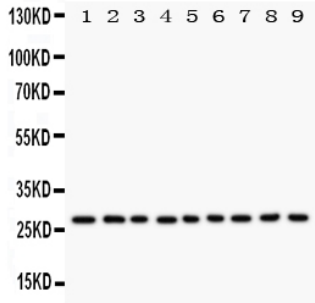
Product Name	Anti-Kallikrein 6/KLK6 Antibody Picoband®
Reactive Species	Human
Description	Boster Bio Anti-Kallikrein 6/KLK6 Antibody catalog # PA1767. Tested in IHC, ICC, WB applications. This antibody reacts with Human. The brand Picoband indicates this is a premium antibody that guarantees superior quality, high affinity, and strong signals with minimal background in Western blot applications. Only our best-performing antibodies are designated as Picoband, ensuring unmatched performance.
Application	IHC, ICC, WB
Clonality	Polyclonal
Formulation	Each vial contains antibody formulated with stabilizing components, 0.9mg NaCl, 0.2mg Na <sub>2</sub> HPO <sub>4</sub> , 0.05mg Thimerosal, 0.05mg NaN <sub>3</sub> . *This antibody is supplied in a stabilized formulation. Compatibility with conjugation reactions depends on the chemistry of the conjugation method used. For conjugation methods that are not compatible with the stabilizing components present in this formulation, a carrier-free antibody format is required.
Storage Instructions	Store at -20°C for one year from date of receipt. After reconstitution, at 4°C for one month. It can also be aliquotted and stored frozen at -20°C for six months. Avoid repeated freeze-thaw cycles.
Host	Rabbit
Uniprot ID	Q92876

### Technical Details

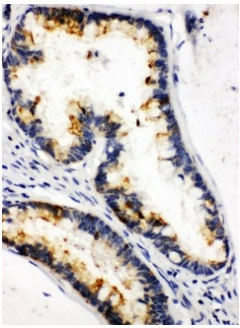
Immunogen	A synthetic peptide corresponding to a sequence at the C-terminus of human Kallikrein 6.
Recommended Detection Systems	Boster recommends Enhanced Chemiluminescent Kit with anti-Rabbit IgG (EK1002) for Western

	blot, and HRP Conjugated anti-Rabbit IgG Super Vision Assay Kit (SV0002-1) for IHC(P) and ICC.
Cross Reactivity	No cross-reactivity with other proteins
Isotype	Rabbit IgG
Form	Lyophilized
Concentration	Adding 0.2 ml of distilled water will yield a concentration of 500 ug/ml.
Purification	Immunogen affinity purified.
Suggested Dilutions	Immunocytochemistry , 0.5-1ug/ml, Human, - Immunohistochemistry (Paraffin-embedded Section), 0.5-1ug/ml, Human Western blot, 0.1-0.5ug/ml, Human

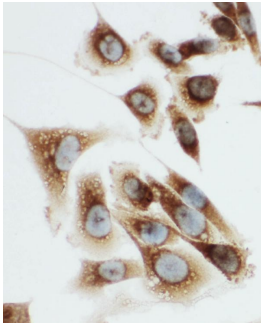
## Anti-Kallikrein 6/KLK6 Antibody Picoband® (PA1767) Images



Anti-Kallikrein 6 antibody, PA1767, Western blotting All lanes:  
Anti Kallikrein 6 (PA1767) at 0.5ug/ml Lane 1: MCF-7 Whole Cell Lysate at 40ug Lane 2: HELA Whole Cell Lysate at 40ug Lane 3: MM231 Whole Cell Lysate at 40ug Lane 4: MM453 Whole Cell Lysate at 40ug Lane 5: A549 Whole Cell Lysate at 40ug Lane 6: SMMC Whole Cell Lysate at 40ug Lane 7: COLO320 Whole Cell Lysate at 40ug Lane 8: SW620 Whole Cell Lysate at 40ug Lane 9: HT1080 Whole Cell Lysate at 40ug Predicted bind size: 27KD Observed bind size: 27KD



Anti-Kallikrein 6 antibody, PA1767, IHC(P)IHC(P): Human Intestinal Cancer Tissue



Anti-Kallikrein 6 antibody, PA1767, ICCICC: PC-3 Cell

### Submit a product review to [Biocompare.com](https://www.biocompare.com)

Submit a review of this product to [Biocompare.com](https://www.biocompare.com) to receive a \$20 Amazon.com giftcard! Your reviews help your fellow scientists make the right decisions. Thank you for your contribution.



Anti-Kallikrein 6/KLK6 Antibody

For Research Use Only. Not for use in diagnostic procedures.