

## Anti-Rab5/RAB5A Antibody

Catalog Number: PA1773

### About RAB5A

RAB5A (Ras-associated protein RAB5A), also called RAB5, is a protein that in humans is encoded by the RAB5A gene. RAB5 is a rate-limiting component of the machinery regulating the kinetics of membrane traffic in the early endocytic pathway. The RAB5A gene is mapped on 3p24.3. RAB5 is indispensable for a form of receptor tyrosine kinase-induced actin remodeling called circular ruffling. It signals to the actin cytoskeleton through RNTRE, a RAB5-specific GTPase-activating protein (GAP). RAB5 activity on phagosome membranes began to increase on disassembly of the actin coat encapsulating phagosomes. In addition, RAB5 activation is either continuous or repetitive for up to 10 minutes, but it ends before the collapse of engulfed apoptotic cells. Expression of a dominant-negative mutant of RAB5 delayed this collapse of apoptotic thymocytes, showing a role for RAB5 in phagosome maturation.

### Overview

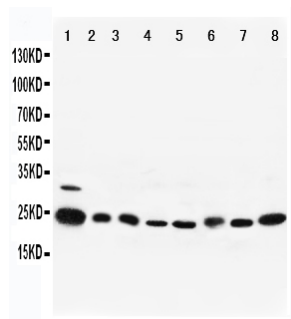
Product Name	Anti-Rab5/RAB5A Antibody
Reactive Species	Human, Mouse, Rat
Description	Boster Bio Anti-Rab5/RAB5A Antibody catalog # PA1773. Tested in IHC, WB applications. This antibody reacts with Human, Mouse, Rat.
Application	IHC, WB
Clonality	Polyclonal
Formulation	Each vial contains 5mg BSA, 0.9mg NaCl, 0.2mg Na <sub>2</sub> HPO <sub>4</sub> , 0.05mg Thimerosal, 0.05mg NaN <sub>3</sub> .
Storage Instructions	Store at -20°C for one year from date of receipt. After reconstitution, at 4°C for one month. It can also be aliquotted and stored frozen at -20°C for six months. Avoid repeated freeze-thaw cycles.
Host	Rabbit
Uniprot ID	P20339

### Technical Details

Immunogen	A synthetic peptide corresponding to a sequence in the middle region of human Rab5, identical to the related rat and mouse sequences.
Predicted Reactive Species	Hamster
Recommended Detection Systems	Boster recommends Enhanced Chemiluminescent Kit with anti-Rabbit IgG (EK1002) for Western blot, and HRP Conjugated anti-Rabbit IgG Super Vision Assay Kit (SV0002-1) for IHC(P).
Cross Reactivity	No cross-reactivity with other proteins
Isotype	Rabbit IgG

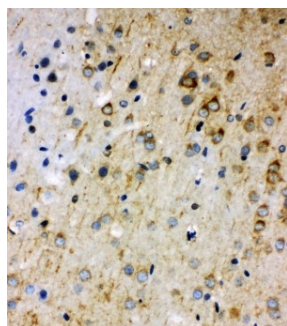
Form	Lyophilized
Concentration	Adding 0.2 ml of distilled water will yield a concentration of 500 ug/ml.
Purification	Immunogen affinity purified.
Suggested Dilutions	<p>Dilute the sample so that the expected range of concentrations fall within the detection range of this kit.</p> <p>If the expected range of concentration is unknown, a pilot test should be conducted to decide the optimal dilution ratio for your samples.</p> <p>Some PubMed article(s) citing the expression level of this target are as follows:</p> <p>Boster Bio's internal QC testing used:</p> <p>Immunohistochemistry (Paraffin-embedded Section), 0.5-1ug/ml, Human, Rat, Mouse, By Heat</p> <p>Western blot, 0.1-0.5ug/ml, Human, Mouse, Rat</p>

## Anti-Rab5/RAB5A Antibody (PA1773) Images



Anti-Rab5 antibody, PA1773, Western blotting

Lane 1: Rat Brain Tissue Lysate  
Lane 2: Rat Ovary Tissue Lysate  
Lane 3: Human Placenta Tissue Lysate  
Lane 4: HELA Cell Lysate  
Lane 5: 293T Cell Lysate  
Lane 6: A375 Cell Lysate  
Lane 7: COLO320 Cell Lysate  
Lane 8: MM453 Cell Lysate



Anti-Rab5 antibody, PA1773, IHC(P)  
IHC(P):Rat Brain Tissue

## 1 Publications Citing This Product

1. PubMed ID: 28491025, Han F, Jiang J, Ding J, Liu H, Xiao B, Shi Y. Front Behav Neurosci. 2017 Apr 26;11:62. doi: 10.3389/fnbeh.2017.00062. eCollection 2017. Change of Rin1 and Stathmin in the Animal Model of Traumatic Stresses

Visit [bosterbio.com/anti-rab5-antibody-pa1773-boster.html](http://bosterbio.com/anti-rab5-antibody-pa1773-boster.html) to see all 1 publications.

## Submit a product review to Biocompare.com

Submit a review of this product to Biocompare.com to receive a \$20 Amazon.com giftcard! Your reviews help your fellow scientists make the right decisions. Thank you for your contribution.



Anti-Rab5/RAB5A Antibody