

Anti-LIM and SH3 domain protein 1 LASP1 Antibody

Catalog Number: PA1791-1

About LASP1

LASP1 (LIM and SH3 domain protein 1), also known as LASP1, is a protein that in humans is encoded by the LASP1 gene. This gene encodes a member of a LIM protein subfamily which is characterized by a LIM motif and a domain of Src homology region 3. This protein functions as an actin-binding protein and possibly in cytoskeletal organization. LASP1 has been shown to interact with Zyxin. Tomasetto et al. (1995) mapped the LASP1 gene to chromosome 17q11-q21.3 by radioactive in situ hybridization. Northern blot analysis revealed that LASP1 mRNA was expressed at a basal level in all normal tissues examined and overexpressed in 8% of primary breast cancers. In most of these cancers, LASP1 and ERBB2 were simultaneously overexpressed.

Overview

Product Name	Anti-LIM and SH3 domain protein 1 LASP1 Antibody
Reactive Species	Human
Description	Boster Bio Anti-LIM and SH3 domain protein 1 LASP1 Antibody catalog # PA1791-1. Tested in IHC, WB applications. This antibody reacts with Human.
Application	IHC, WB
Clonality	Polyclonal
Formulation	Each vial contains 5mg BSA, 0.9mg NaCl, 0.2mg Na ₂ HPO ₄ , 0.05mg Thimerosal, 0.05mg NaN ₃ .
Storage Instructions	Store at -20°C for one year from date of receipt. After reconstitution, at 4°C for one month. It can also be aliquotted and stored frozen at -20°C for six months. Avoid repeated freeze-thaw cycles.
Host	Rabbit
Uniprot ID	Q14847

Technical Details

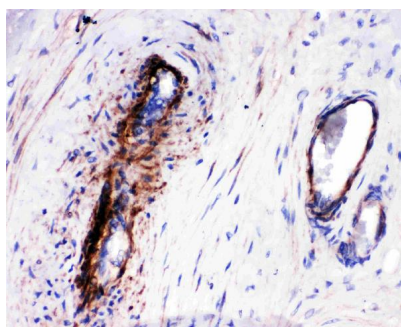
Immunogen	A synthetic peptide corresponding to a sequence at the C-terminus of human LASP1 (152-168aa YRRPLEQQPHHIPTSA).
Predicted Reactive Species	Monkey
Recommended Detection Systems	Boster recommends Enhanced Chemiluminescent Kit with anti-Rabbit IgG (EK1002) for Western

	blot, and HRP Conjugated anti-Rabbit IgG Super Vision Assay Kit (SV0002-1) for IHC(P) .
Cross Reactivity	No cross reactivity with other proteins
Form	Lyophilized
Concentration	Adding 0.2 ml of distilled water will yield a concentration of 500 μ g/ml.
Purification	Immunogen affinity purified.
Suggested Dilutions	<p>Dilute the sample so that the expected range of concentrations fall within the detection range of this kit.</p> <p>If the expected range of concentration is unknown, a pilot test should be conducted to decide the optimal dilution ratio for your samples.</p> <p>Some PubMed article(s) citing the expression level of this target are as follows: Boster Bio's internal QC testing used Immunohistochemistry (Paraffin-embedded Section), 0.5-1 μg/ml, Human, By Heat Western blot, 0.1-0.5 μg/ml, Human</p> <p>For protocols please visit https://www.bosterbio.com/protocol-and-troubleshooting/</p>

Anti-LIM and SH3 domain protein 1 LASP1 Antibody (PA1791-1) Images



Anti-LASP1 antibody, PA1791-1, Western blotting
 Lane 1: HELA Cell Lysate
 Lane 2: MCF-7 Cell Lysate



Anti-LASP1 antibody, PA1791-1, IHC(P)
 IHC(P): Human Placenta Tissue

1 Publications Citing This Product

1. PubMed ID: 32473899, Lu C, Fu L, Qian X, Dou L, Cang S. Knockdown of circular RNA circ-FARSA restricts colorectal cancer cell growth through regulation of miR-330-5p/LASP1 axis. Arch Biochem Biophys. 2020 Aug 15; 689:108434. doi:10.1016/j.abb.2020.108434. Epub 2020 May 29. PMID:32473899

Visit bosterbio.com/anti-lasp1-antibody-pa1791-1-boster.html to see all 1 publications.

Submit a product review to Biocompare.com

Submit a review of this product to Biocompare.com to receive a \$20 Amazon giftcard! Your reviews help your fellow scientists make the right decisions. Thank you for your contribution.



Anti-LIM and SH3 domain protein 1 LASP1 Antibody