

Anti-Rel B/RELB Antibody Picoband®

Catalog Number: PA1803

About RELB

RELB (v-rel reticuloendotheliosis viral oncogene homolog B) is also known as IREL. The International Radiation Hybrid Mapping Consortium assigned the RELB gene to chromosome 19. By RT-PCR and immunocytochemical analyses, Clark et al. (1999) showed that RELB expression correlated with dendritic cell activation. NF-kappa-B-inducing kinase is required for osteoclastogenesis in response to pathologic stimuli. Vaira et al. (2008) found that overexpression of Relb, but not Rela, rescued differentiation of mouse Nik $-/-$ osteoclast precursors, indicating that blockade of the alternative NF-kappa-B pathway, rather than the classical NF-kappa-B pathway, is responsible for the osteoclastogenic defect in the absence of Nik. Using Relb $-/-$ mice, they showed that Relb itself was required for Rankl-induced osteoclastogenesis in vitro and for TNF-induced bone resorption in vivo. Both Relb $-/-$ and Nik $-/-$ mice were resistant to tumor-mediated osteolysis. Vaira et al. (2008) concluded that the alternative NF-kappa-B pathway, via RELB, plays an essential and unique role in RANKL signaling toward osteoclast development.

Overview

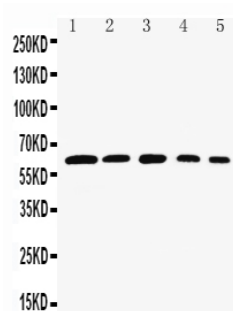
Product Name	Anti-Rel B/RELB Antibody Picoband®
Reactive Species	Human, Mouse, Rat
Description	Boster Bio Anti-Rel B/RELB Antibody catalog # PA1803. Tested in WB applications. This antibody reacts with Human, Mouse, Rat. The brand Picoband indicates this is a premium antibody that guarantees superior quality, high affinity, and strong signals with minimal background in Western blot applications. Only our best-performing antibodies are designated as Picoband, ensuring unmatched performance.
Application	WB
Clonality	Polyclonal
Formulation	Each vial contains antibody formulated with stabilizing components, 0.9mg NaCl, 0.2mg Na ₂ HPO ₄ , 0.05mg Thimerosal, 0.05mg NaN ₃ . *This antibody is supplied in a stabilized formulation. Compatibility with conjugation reactions depends on the chemistry of the conjugation method used. For conjugation methods that are not compatible with the stabilizing components present in this formulation, a carrier-free antibody format is required.
Storage Instructions	Store at -20°C for one year from date of receipt. After reconstitution, at 4°C for one month. It can also be aliquotted and stored frozen at -20°C for six months. Avoid repeated freeze-thaw cycles.
Host	Rabbit
Uniprot ID	Q01201

Technical Details

Immunogen	A synthetic peptide corresponding to a sequence at the C-terminus of human Rel B, identical to the related mouse sequence.
-----------	--

Recommended Detection Systems	Boster recommends Enhanced Chemiluminescent Kit with anti-Rabbit IgG (EK1002) for Western blot.
Cross Reactivity	No cross-reactivity with other proteins
Isotype	Rabbit IgG
Form	Lyophilized
Concentration	Adding 0.2 ml of distilled water will yield a concentration of 500 ug/ml.
Purification	Immunogen affinity purified.
Suggested Dilutions	Western blot, 0.1-0.5ug/ml, Human, Mouse, Rat

Anti-Rel B/RELB Antibody Picoband® (PA1803) Images



Anti-Rel B antibody, PA1803, Western blotting
Lane 1: Rat Testis Tissue Lysate
Lane 2: HELA Cell Lysate
Lane 3: NIH3T3 Cell Lysate
Lane 4: RAJI Cell Lysate
Lane 5: HEPA Cell Lysate

Submit a product review to Biocompare.com

Submit a review of this product to Biocompare.com to receive a \$20 Amazon.com giftcard! Your reviews help your fellow scientists make the right decisions. Thank you for your contribution.



Anti-Rel B/RELB Antibody

For Research Use Only. Not for use in diagnostic procedures.