

Anti-Crk-like protein CrkL Antibody Picoband®

Catalog Number: PA1808

About CRKL

CRKL (v-crk sarcoma virus CT10 oncogene homolog (avian)-like) also called ONCOGENE CRKL, encodes a 303-amino acid polypeptide with a predicted molecular mass of 36 kD. While CRKL is not the human homolog of CRK, it is similar to protein-tyrosine kinases with SH2 and SH3 (src homology) domains. By fluorescence in situ hybridization, the CRKL gene is localized to chromosome 22q11, centromeric of the chronic myelogenous leukemia breakpoint region. Senechal et al. (1996) showed that CRKL becomes phosphorylated when overexpressed, activates Ras-dependent and JNK pathways, and transforms fibroblasts. The authors also found CRKL to be a substrate for the BCR-ABL tyrosine kinase, leading them to conclude that CRKL is a tyrosine kinase and an oncogene. Crkl was required for normal cellular responses to Fgf8, including survival and migration, Erk activation, and target gene expression.

Overview

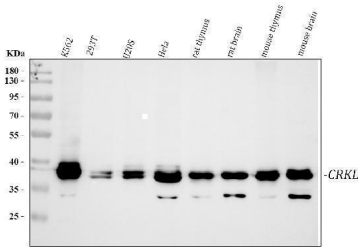
Product Name	Anti-Crk-like protein CrkL Antibody Picoband®
Reactive Species	Human, Mouse, Rat
Description	Boster Bio Anti-Crk-like protein CrkL Antibody catalog # PA1808. Tested in Flow Cytometry, WB applications. This antibody reacts with Human, Mouse, Rat. The brand Picoband indicates this is a premium antibody that guarantees superior quality, high affinity, and strong signals with minimal background in Western blot applications. Only our best-performing antibodies are designated as Picoband, ensuring unmatched performance.
Application	Flow Cytometry, WB
Clonality	Polyclonal
Formulation	Each vial contains antibody formulated with stabilizing components, 0.9mg NaCl, 0.2mg Na ₂ HPO ₄ , 0.05mg Thimerosal, 0.05mg NaN ₃ . *This antibody is supplied in a stabilized formulation. Compatibility with conjugation reactions depends on the chemistry of the conjugation method used. For conjugation methods that are not compatible with the stabilizing components present in this formulation, a carrier-free antibody format is required.
Storage Instructions	Store at -20°C for one year from date of receipt. After reconstitution, at 4°C for one month. It can also be aliquotted and stored frozen at -20°C for six months. Avoid repeated freeze-thaw cycles.
Host	Rabbit
Uniprot ID	P46109

Technical Details

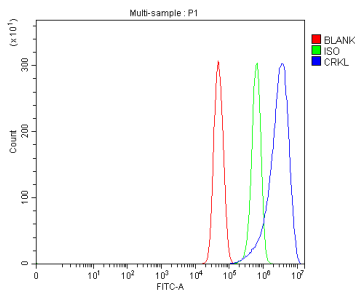
Immunogen	A synthetic peptide corresponding to a sequence at the C-terminus of human CrkL, different from the related mouse and rat sequences by one amino acid.
Recommended Detection Systems	Boster recommends Enhanced Chemiluminescent Kit with anti-Rabbit IgG (EK1002) for Western

	blot, and HRP Conjugated anti-Rabbit IgG Super Vision Assay Kit (SV0002-1) for ICC.
Cross Reactivity	No cross-reactivity with other proteins
Isotype	Rabbit IgG
Form	Lyophilized
Concentration	Adding 0.2 ml of distilled water will yield a concentration of 500 ug/ml.
Purification	Immunogen affinity purified.
Suggested Dilutions	Western blot, 0.1-0.5ug/ml, Human, Mouse, Rat Flow Cytometry(Fixed), 1-3 ug/1x10 ⁶ cells, Human

Anti-Crk-like protein CrkL Antibody Picoband® (PA1808) Images



Western blot analysis of CRKL using anti-CRKL antibody (PA1808). Electrophoresis was performed on a 5-20% SDS-PAGE gel at 70V (Stacking gel) / 90V (Resolving gel) for 2-3 hours. The sample well of each lane was loaded with 30 ug of sample under reducing conditions. Lane 1: human K562 whole cell lysates, Lane 2: human 293T whole cell lysates, Lane 3: human U20S whole cell lysates, Lane 4: human HeLa whole cell lysates, Lane 5: rat thymus tissue lysates, Lane 6: rat brain tissue lysates, Lane 7: mouse thymus tissue lysates, Lane 8: mouse brain tissue lysates. After electrophoresis, proteins were transferred to a nitrocellulose membrane at 150 mA for 50-90 minutes. Blocked the membrane with 5% non-fat milk/TBS for 1.5 hour at RT. The membrane was incubated with rabbit anti-CRKL antigen affinity purified polyclonal antibody (Catalog # PA1808) at 0.5 ug/mL overnight at 4°C, then washed with TBS-0.1%Tween 3 times with 5 minutes each and probed with a goat anti-rabbit IgG-HRP secondary antibody at a dilution of 1:5000 for 1.5 hour at RT. The signal is developed using an Enhanced Chemiluminescent detection (ECL) kit (Catalog # EK1002) with Tanon 5200 system. A specific band was detected for CRKL at approximately 39 kDa. The expected band size for CRKL is at 34 kDa.



Flow Cytometry analysis of U251 cells using anti-CRKL antibody (PA1808). Overlay histogram showing U251 cells stained with PA1808 (Blue line). To facilitate intracellular staining, cells were fixed with 4% paraformaldehyde and permeabilized with permeabilization buffer. The cells were blocked with 10% normal goat serum. And then incubated with rabbit anti-CRKL Antibody (PA1808, 1 ug/1x10⁶ cells) for 30 min at 20°C. DyLight®488 conjugated goat anti-rabbit IgG (BA1127, 5-10 ug/1x10⁶ cells) was used as secondary antibody for 30 minutes at 20°C. Isotype control antibody (Green line) was rabbit IgG (1 ug/1x10⁶) used under the same conditions. Unlabelled sample (Red line) was also used as a control.

Submit a product review to [Biocompare.com](https://www.biocompare.com)

Submit a review of this product to [Biocompare.com](https://www.biocompare.com) to receive a \$20 Amazon.com giftcard! Your reviews help your fellow scientists make the right decisions. Thank you for your contribution.



Anti-Crk-like protein CrkL Antibody

For Research Use Only. Not for use in diagnostic procedures.