

## Anti-Kallikrein 10/KLK10 Antibody Picoband®

Catalog Number: PA1821

### About KLK10

KLK10 (kallikrein-related peptidase 10) also known as kallikrein 10, PRSSL1 or NES1, belongs to the kallikrein subfamily of serine proteases, which are involved in a variety of enzymatic processes. Its encoded protein is secreted and may play a role in suppression of tumorigenesis in breast and prostate cancers. KLK10 also contains 12 conserved cysteines in its protease domain that are expected to form 6 disulfide bonds, as in other serine proteases. RT-PCR detected variable levels of KLK10 expression in nearly all of the 35 adult and fetal tissues examined. The KLK10 gene contains 6 exons, the first of which is noncoding. By fluorescence in situ hybridization, Polikoff et al. (1997) mapped the PRSSL1 gene to 19q13.3. By genomic sequence analysis, Gan et al. (2000) mapped the KLK10 gene within the KLK gene cluster on chromosome 19q13. This cluster includes 13 KLK genes and 5 pseudogenes.

### Overview

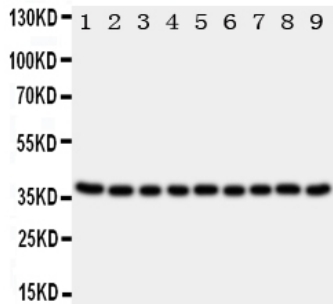
Product Name	Anti-Kallikrein 10/KLK10 Antibody Picoband®
Reactive Species	Human, Rat
Description	Boster Bio Anti-Kallikrein 10/KLK10 Antibody catalog # PA1821. Tested in WB applications. This antibody reacts with Human, Rat. The brand Picoband indicates this is a premium antibody that guarantees superior quality, high affinity, and strong signals with minimal background in Western blot applications. Only our best-performing antibodies are designated as Picoband, ensuring unmatched performance.
Application	WB
Clonality	Polyclonal
Formulation	Each vial contains antibody formulated with stabilizing components, 0.9mg NaCl, 0.2mg Na <sub>2</sub> HPO <sub>4</sub> , 0.05mg Thimerosal, 0.05mg NaN <sub>3</sub> . *This antibody is supplied in a stabilized formulation. Compatibility with conjugation reactions depends on the chemistry of the conjugation method used. For conjugation methods that are not compatible with the stabilizing components present in this formulation, a carrier-free antibody format is required.
Storage Instructions	Store at -20°C for one year from date of receipt. After reconstitution, at 4°C for one month. It can also be aliquotted and stored frozen at -20°C for six months. Avoid repeated freeze-thaw cycles.
Host	Rabbit
Uniprot ID	O43240

### Technical Details

Immunogen	A synthetic peptide corresponding to a sequence at the C-terminus of human Kallikrein 10.
Recommended Detection Systems	Boster recommends Enhanced Chemiluminescent Kit with anti-Rabbit IgG (EK1002) for Western blot.

Cross Reactivity	No cross-reactivity with other proteins
Isotype	Rabbit IgG
Form	Lyophilized
Concentration	Adding 0.2 ml of distilled water will yield a concentration of 500 ug/ml.
Purification	Immunogen affinity purified.
Suggested Dilutions	Western blot, 0.1-0.5ug/ml, Human, Rat

## Anti-Kallikrein 10/KLK10 Antibody Picoband® (PA1821) Images



Anti-Kallikrein 10 antibody, PA1821, Western blotting All lanes: Anti Kallikrein 10 (PA1821) at 0.5ug/ml Lane 1: Rat Ovary Tissue Lysate at 50ug Lane 2: Rat Testis Tissue Lysate at 50ug Lane 3: Rat Spleen Tissue Lysate at 50ug Lane 4: Rat Liver Tissue Lysate at 50ug Lane 5: 22RV Whole Cell Lysate at 40ug Lane 6: SROV Whole Cell Lysate at 40ug Lane 7: HELA Whole Cell Lysate at 40ug Lane 8: MCF-7 Whole Cell Lysate at 40ug Lane 9: MM231 Whole Cell Lysate at 40ug Predicted bind size: 37KD Observed bind size: 37KD

### Submit a product review to Biocompare.com

Submit a review of this product to Biocompare.com to receive a \$20 Amazon.com giftcard! Your reviews help your fellow scientists make the right decisions. Thank you for your contribution.



Anti-Kallikrein 10/KLK10 Antibody

For Research Use Only. Not for use in diagnostic procedures.