

Anti-PTCH2 Antibody Picoband®

Catalog Number: PA1859

About PTCH2

PTCH2 (patched 2), also known as PTC2, encodes a 1,203-amino acid putative transmembrane protein that is highly homologous to the PTCH product. The Patched-hedgehog signaling pathway is involved in establishing segment polarity and the anterior-posterior orientation of a number of developing appendages. The pathway is conserved from fly to vertebrates and has been implicated in a number of human neoplasms and developmental syndromes. Mutations in the human Patched gene are the basis of the nevoid basal cell carcinoma syndrome. With age, homozygous mutant male mice developed skin lesions consisting of alopecia and epidermal hyperplasia, suggesting a role for Ptch2 in adult epidermal homeostasis via Shh signaling.

Overview

Product Name	Anti-PTCH2 Antibody Picoband®
Reactive Species	Human, Mouse
Description	Boster Bio Anti-PTCH2 Antibody catalog # PA1859. Tested in WB applications. This antibody reacts with Human, Mouse. The brand Picoband indicates this is a premium antibody that guarantees superior quality, high affinity, and strong signals with minimal background in Western blot applications. Only our best-performing antibodies are designated as Picoband, ensuring unmatched performance.
Application	WB
Clonality	Polyclonal
Formulation	Each vial contains antibody formulated with stabilizing components, 0.9mg NaCl, 0.2mg Na ₂ HPO ₄ , 0.05mg Thimerosal, 0.05mg NaN ₃ . *This antibody is supplied in a stabilized formulation. Compatibility with conjugation reactions depends on the chemistry of the conjugation method used. For conjugation methods that are not compatible with the stabilizing components present in this formulation, a carrier-free antibody format is required.
Storage Instructions	Store at -20°C for one year from date of receipt. After reconstitution, at 4°C for one month. It can also be aliquotted and stored frozen at -20°C for six months. Avoid repeated freeze-thaw cycles.
Host	Rabbit
Uniprot ID	Q9Y6C5

Technical Details

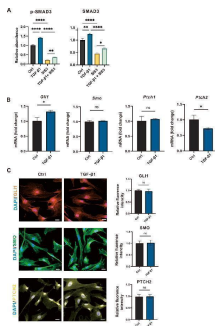
Immunogen	A synthetic peptide corresponding to a sequence at the C-terminus of human PTCH2, different from the related mouse sequence by one amino acid.
Recommended Detection Systems	Boster recommends Enhanced Chemiluminescent Kit with anti-Rabbit IgG (EK1002) for Western blot.

Cross Reactivity	No cross-reactivity with other proteins
Isotype	Rabbit IgG
Form	Lyophilized
Concentration	Adding 0.2 ml of distilled water will yield a concentration of 500 ug/ml.
Purification	Immunogen affinity purified.
Suggested Dilutions	Western blot, 0.1-0.5ug/ml, Human, Mouse

Anti-PTCH2 Antibody Picoband® (PA1859) Images



Anti-PTCH2 antibody, PA1859, Western blottingWB: HELA Cell Lysate



TGF-beta1/SMAD3 promotes the nuclear translocation and expression of GLI2. (A) SMAD3 and p-SMAD3 protein levels were obtained by western blot upon primary PSC treated with single or combined TGF-beta1 and SIS3 treatment for 4 days (n = 4). beta-actin was used to normalize protein levels. (B) mRNA levels of Gli1, Smo, Ptch1, and Ptch2 in PSCs following 24-hour treatment with 10 ng/mL TGF-beta1 (n = 3). (C) Representative immunofluorescence images showing expression levels of GLI1 (red), SMO (green), and PTCH2 (yellow) in PSCs treated with 10 ng/mL TGF-beta1 for 72 hours. Nuclei were stained with DAPI (blue). Scale bar: 20 um. Fluorescence intensity of GLI1, PTCH2, and SMO was quantified (n = 4). All data are represented as mean ± SEM. *p < 0.05, **p < 0.01, ***p < 0.001, ****p < 0.0001. ns, not significant. Index in PubMed under a CC BY license. PMID: 41281756

Submit a product review to Biocompare.com

Submit a review of this product to Biocompare.com to receive a \$20 Amazon.com giftcard! Your reviews help your fellow scientists make the right decisions. Thank you for your contribution.



Anti-PTCH2 Antibody

For Research Use Only. Not for use in diagnostic procedures.