

## Anti-Cullin 2/CUL2 Antibody Picoband®

Catalog Number: PA1877

### About CUL2

Cullin 2 (CUL2) is a protein that in humans is encoded by the CUL2 gene. Using immunofluorescence, they showed that CUL2 is a cytosolic protein that can be translocated to the nucleus by VHL. By fluorescence in situ hybridization, Clifford et al. (1999) mapped the CUL2 gene to 10p11.2-p11.1, a region reported to show loss of heterozygosity (LOH) in several forms of human cancer, including non-clear cell renal cell carcinoma. Pause et al. (1997) suggested that CUL2 is a candidate tumor suppressor gene, as has been proposed for CUL1 (603134). Lonergan et al. (1998) demonstrated that formation of the VBC-CUL2 complexes is linked to the regulation of hypoxia-inducible mRNAs by VHL. Cul2 was one of several proteins required for degradation of a class of RNA-binding germline proteins in somatic cells of the early blastomere.

### Overview

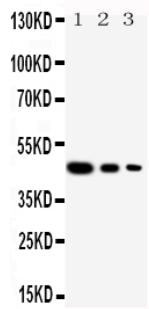
Product Name	Anti-Cullin 2/CUL2 Antibody Picoband®
Reactive Species	Human, Mouse, Rat
Description	Boster Bio Anti-Cullin 2/CUL2 Antibody catalog # PA1877. Tested in WB applications. This antibody reacts with Human, Mouse, Rat. The brand Picoband indicates this is a premium antibody that guarantees superior quality, high affinity, and strong signals with minimal background in Western blot applications. Only our best-performing antibodies are designated as Picoband, ensuring unmatched performance.
Application	WB
Clonality	Polyclonal
Formulation	Each vial contains antibody formulated with stabilizing components, 0.9mg NaCl, 0.2mg Na <sub>2</sub> HPO <sub>4</sub> , 0.05mg Thimerosal, 0.05mg NaN <sub>3</sub> . *This antibody is supplied in a stabilized formulation. Compatibility with conjugation reactions depends on the chemistry of the conjugation method used. For conjugation methods that are not compatible with the stabilizing components present in this formulation, a carrier-free antibody format is required.
Storage Instructions	Store at -20°C for one year from date of receipt. After reconstitution, at 4°C for one month. It can also be aliquotted and stored frozen at -20°C for six months. Avoid repeated freeze-thaw cycles.
Host	Rabbit
Uniprot ID	Q13617

### Technical Details

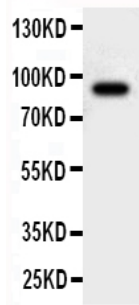
Immunogen	A synthetic peptide corresponding to a sequence in the middle region of human Cullin 2, different from the related mouse and rat sequences by one amino acid.
Recommended Detection Systems	Boster recommends Enhanced Chemiluminescent Kit with anti-Rabbit IgG (EK1002) for Western blot.

Cross Reactivity	No cross-reactivity with other proteins
Isotype	Rabbit IgG
Form	Lyophilized
Concentration	Adding 0.2 ml of distilled water will yield a concentration of 500 ug/ml.
Purification	Immunogen affinity purified.
Suggested Dilutions	Western blot, 0.1-0.5ug/ml, Human, Rat, Mouse

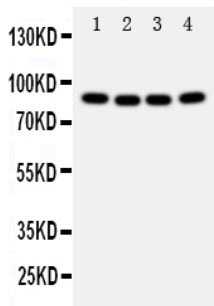
## Anti-Cullin 2/CUL2 Antibody Picoband® (PA1877) Images



Anti-Cullin 2 antibody, PA1877, Western blotting  
Recombinant Protein Detection Source: E.coli derived  
-recombinant human Cul2, 46.5KD (162aa tag+L150-Y394)  
Lane 1: Recombinant Human Cul2 Protein 10ng  
Lane 2: Recombinant Human Cul2 Protein 5ng  
Lane 3: Recombinant Human Cul2 Protein 2.5ng



Anti-Cullin 2 antibody, PA1877, Western blotting  
WB: Rat Brain Tissue Lysate



Anti-Cullin 2 antibody, PA1877, Western blotting  
Lane 1: A431 Cell Lysate  
Lane 2: SMMC Cell Lysate  
Lane 3: HELA Cell Lysate  
Lane 4: COLO320 Cell Lysate

### Submit a product review to Biocompare.com

Submit a review of this product to Biocompare.com to receive a \$20 Amazon.com giftcard! Your reviews help your fellow scientists make the right decisions. Thank you for your contribution.



Anti-Cullin 2/CUL2 Antibody

For Research Use Only. Not for use in diagnostic procedures.