

Anti-Krüppel-like factor 3 KLF3 Antibody Picoband®

Catalog Number: PA1888

About KLF3

KLF3 (Krüppel-like factor 3) is a protein that in humans is encoded by the KLF3 gene. It is also known as BKLF (Basic kruppel-like factor). KLF3 is a member of the Krüppel-like factors family of transcription factors. KLF3 primarily represses transcription through the transcriptional corepressor C-terminal binding protein (CtBP). Suske et al. (2005) stated that the human KLF3 gene maps to chromosome 4p14, and the mouse Klf3 gene maps to chromosome 5C3.3. Suske et al. (2005) stated that the human and mouse KLF3 proteins contain 345 and 344 amino acids, respectively. Both have a characteristic zinc finger domain, but lack the N-terminal buttonhead box found in related SP transcription factors. The repression mediated through KLF3 is also partially dependent on the sumoylation of its K10 and K197. Within KLF3's C-terminal, which is highly conserved throughout the KLF family, resides three C2H2 zinc fingers that preferentially bind the site NRG GNG NGR.

Overview

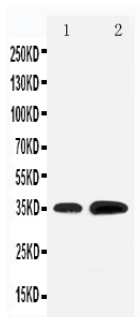
Product Name	Anti-Krüppel-like factor 3 KLF3 Antibody Picoband®
Reactive Species	Human, Mouse, Rat
Description	Boster Bio Anti-Krüppel-like factor 3 KLF3 Antibody catalog # PA1888. Tested in WB applications. This antibody reacts with Human, Mouse, Rat. The brand Picoband indicates this is a premium antibody that guarantees superior quality, high affinity, and strong signals with minimal background in Western blot applications. Only our best-performing antibodies are designated as Picoband, ensuring unmatched performance.
Application	WB
Clonality	Polyclonal
Formulation	Each vial contains antibody formulated with stabilizing components, 0.9mg NaCl, 0.2mg Na ₂ HPO ₄ , 0.05mg Thimerosal, 0.05mg NaN ₃ . *This antibody is supplied in a stabilized formulation. Compatibility with conjugation reactions depends on the chemistry of the conjugation method used. For conjugation methods that are not compatible with the stabilizing components present in this formulation, a carrier-free antibody format is required.
Storage Instructions	Store at -20°C for one year from date of receipt. After reconstitution, at 4°C for one month. It can also be aliquotted and stored frozen at -20°C for six months. Avoid repeated freeze-thaw cycles.
Host	Rabbit
Uniprot ID	P57682

Technical Details

Immunogen	A synthetic peptide corresponding to a sequence at the N-terminus of human KLF3, different from the related rat sequence by one amino acid, and from the related mouse sequence by two amino acids.
-----------	---

Recommended Detection Systems	Boster recommends Enhanced Chemiluminescent Kit with anti-Rabbit IgG (EK1002) for Western blot.
Cross Reactivity	No cross-reactivity with other proteins
Isotype	Rabbit IgG
Form	Lyophilized
Concentration	Adding 0.2 ml of distilled water will yield a concentration of 500 ug/ml.
Purification	Immunogen affinity purified.
Suggested Dilutions	Western blot, 0.1-0.5ug/ml, Human, Rat, Mouse

Anti-Krueppel-like factor 3 KLF3 Antibody Picoband® (PA1888) Images



Anti-KLF3 antibody, PA1888, Western blotting Lane 1: Rat Testis Tissue Lysate Lane 2: HELA Cell Lysate

Submit a product review to Biocompare.com

Submit a review of this product to Biocompare.com to receive a \$20 Amazon.com giftcard! Your reviews help your fellow scientists make the right decisions. Thank you for your contribution.



Anti-Krueppel-like factor 3 KLF3 Antibody

For Research Use Only. Not for use in diagnostic procedures.