

Anti-Krueppel-like factor 5 KLF5 Antibody Picoband®

Catalog Number: PA1889

About KLF5

KLF5 (Krueppel-like factor 5) is a protein that in humans is encoded by the KLF5 gene. It is also known as BASIC TRANSCRIPTION ELEMENT-BINDING PROTEIN 2 or BTEB2. This gene encodes a member of the Kruppel-like factor subfamily of zinc finger proteins. Suske et al. (2005) stated that the human KLF5 gene maps to chromosome 13q21.33, and the mouse Klf5 gene to chromosome 14E2.1. Sogawa et al. (1993) isolated a cDNA encoding BTEB2. The predicted 219-amino acid protein contains 3 consecutive zinc finger motifs near the C terminus. The zinc finger domains were 59% and 64% identical to those of Sp1 (189906) and BTEB1, respectively. Both BTEB2 and Sp1 have a short basic region preceding the zinc finger motifs that may play an auxiliary role in DNA binding. The N-terminal region of BTEB2 is proline rich. Recombinant BTEB2 protein and Sp1 showed very similar DNA-binding specificity in vitro. When expressed in mammalian cells, BTEB2 activated the transcription of a [reporter gene](#) fused to a GC box-containing promoter. Sogawa et al. (1993) also identified the rat BTEB2 homolog. Northern blot analysis of rat tissues revealed that BTEB2 is expressed only in the testis and placenta.

Overview

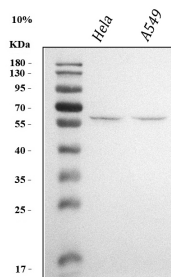
Product Name	Anti-Krueppel-like factor 5 KLF5 Antibody Picoband®
Reactive Species	Human
Description	Boster Bio Anti-Krueppel-like factor 5 KLF5 Antibody catalog # PA1889. Tested in WB applications. This antibody reacts with Human. The brand Picoband indicates this is a premium antibody that guarantees superior quality, high affinity, and strong signals with minimal background in Western blot applications. Only our best-performing antibodies are designated as Picoband, ensuring unmatched performance.
Application	WB
Clonality	Polyclonal
Formulation	Each vial contains antibody formulated with stabilizing components, 0.9mg NaCl, 0.2mg Na2HPO4, 0.05mg Thimerosal, 0.05mg NaN3. *This antibody is supplied in a stabilized formulation. Compatibility with conjugation reactions depends on the chemistry of the conjugation method used. For conjugation methods that are not compatible with the stabilizing components present in this formulation, a carrier-free antibody format is required.
Storage Instructions	Store at -20°C for one year from date of receipt. After reconstitution, at 4°C for one month. It can also be aliquotted and stored frozen at -20°C for six months. Avoid repeated freeze-thaw cycles.
Host	Rabbit
Uniprot ID	Q13887

Technical Details

Immunogen	A synthetic peptide corresponding to a sequence in the middle region of human KLF5, identical to the related rat and mouse sequences.
-----------	---

Recommended Detection Systems	Boster recommends Enhanced Chemiluminescent Kit with anti-Rabbit IgG (EK1002) for Western blot.
Cross Reactivity	No cross-reactivity with other proteins
Isotype	Rabbit IgG
Form	Lyophilized
Concentration	Adding 0.2 ml of distilled water will yield a concentration of 500 ug/ml.
Purification	Immunogen affinity purified.
Suggested Dilutions	Western blot, 0.1-0.5ug/ml, Human

Anti-Krueppel-like factor 5 KLF5 Antibody Picoband® (PA1889) Images



Western blot analysis of KLF5 using anti-KLF5 antibody (PA1889). Electrophoresis was performed on a 5-20% SDS-PAGE gel at 70V (Stacking gel) / 90V (Resolving gel) for 2-3 hours. The sample well of each lane was loaded with 30 ug of sample under reducing conditions. Lane 1: human HeLa whole cell lysates, Lane 2: human A549 whole cell lysates. After electrophoresis, proteins were transferred to a nitrocellulose membrane at 150 mA for 50-90 minutes. Blocked the membrane with 5% non-fat milk/TBS for 1.5 hour at RT. The membrane was incubated with rabbit anti-KLF5 antigen affinity purified polyclonal antibody (Catalog # PA1889) at 0.5 ug/mL overnight at 4°C, then washed with TBS-0.1%Tween 3 times with 5 minutes each and probed with a goat anti-rabbit IgG-HRP secondary antibody at a dilution of 1:5000 for 1.5 hour at RT. The signal is developed using an Enhanced Chemiluminescent detection (ECL) kit (Catalog # EK1002) with Tanon 5200 system. A specific band was detected for KLF5 at approximately 60 kDa. The expected band size for KLF5 is at 51 kDa.

Submit a product review to Biocompare.com

Submit a review of this product to Biocompare.com to receive a \$20 Amazon.com giftcard! Your reviews help your fellow scientists make the right decisions. Thank you for your contribution.



Anti-Krueppel-like factor 5 KLF5 Antibody

For Research Use Only. Not for use in diagnostic procedures.