

Anti-Krueppel-like factor 8 KLF8 Antibody Picoband®

Catalog Number: PA1890

About KLF8

KLF8 (Krueppel-like factor 8) is a protein that in humans is encoded by the KLF8 gene. It is also named as ZNF741, or BKLF3. Kruppel-like factor proteins, including KLF8, all contain a characteristic C-terminal DNA-binding domain containing 3 Kruppel-like zinc fingers, and they all recognize CACCC and GC boxes present in promoters and enhancers. The International Radiation Hybrid Mapping Consortium mapped the KLF8 gene to the X chromosome (WI-18614). Suske et al. (2005) stated that the human KLF8 gene maps to chromosome Xp11.21, and the mouse Klf8 gene to chromosome XF3. van Vliet et al. (2000) identified a cDNA encoding KLF8, also called ZNF741. Expression of KLF8 or only its zinc fingers showed that the fingers could bind to a CACCC box. Sequence analysis predicted that the 359-amino acid protein contains a nuclear localization signal upstream of the zinc fingers, a valine-rich hydrophobic stretch, and a pro-val-asp-leu-ser (PVDLS) motif. Yeast 2-hybrid and GST pull-down analysis demonstrated that CTBP2 interacts with KLF8 through the PVDLS motif.

Overview

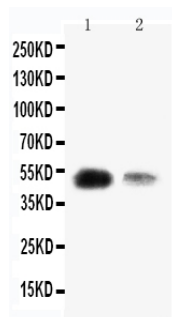
Product Name	Anti-Krueppel-like factor 8 KLF8 Antibody Picoband®
Reactive Species	Human
Description	Boster Bio Anti-Krueppel-like factor 8 KLF8 Antibody catalog # PA1890. Tested in WB applications. This antibody reacts with Human. The brand Picoband indicates this is a premium antibody that guarantees superior quality, high affinity, and strong signals with minimal background in Western blot applications. Only our best-performing antibodies are designated as Picoband, ensuring unmatched performance.
Application	WB
Clonality	Polyclonal
Formulation	Each vial contains antibody formulated with stabilizing components, 0.9mg NaCl, 0.2mg Na ₂ HPO ₄ , 0.05mg Thimerosal, 0.05mg NaN ₃ . *This antibody is supplied in a stabilized formulation. Compatibility with conjugation reactions depends on the chemistry of the conjugation method used. For conjugation methods that are not compatible with the stabilizing components present in this formulation, a carrier-free antibody format is required.
Storage Instructions	Store at -20°C for one year from date of receipt. After reconstitution, at 4°C for one month. It can also be aliquotted and stored frozen at -20°C for six months. Avoid repeated freeze-thaw cycles.
Host	Rabbit
Uniprot ID	O95600

Technical Details

Immunogen	A synthetic peptide corresponding to a sequence at the N-terminus of human KLF8.
Recommended Detection Systems	Boster recommends Enhanced Chemiluminescent Kit with anti-Rabbit IgG (EK1002) for Western

	blot.
Cross Reactivity	No cross-reactivity with other proteins
Isotype	Rabbit IgG
Form	Lyophilized
Concentration	Adding 0.2 ml of distilled water will yield a concentration of 500 ug/ml.
Purification	Immunogen affinity purified.
Suggested Dilutions	Western blot, 0.1-0.5ug/ml, Human

Anti-Krueppel-like factor 8 KLF8 Antibody Picoband® (PA1890) Images



Anti-KLF8 antibody, PA1890, Western blotting
Lane 1: SMMC Cell Lysate
Lane 2: 293T Cell Lysate

Submit a product review to Biocompare.com

Submit a review of this product to Biocompare.com to receive a \$20 Amazon.com giftcard! Your reviews help your fellow scientists make the right decisions. Thank you for your contribution.



Anti-Krueppel-like factor 8 KLF8 Antibody

For Research Use Only. Not for use in diagnostic procedures.