

Anti-p107/RBL1 Antibody Picoband®

Catalog Number: PA1894

About RBL1

RBL1 (Retinoblastoma-like 1), also known as Cullular Proteins p107, CP107 and 107, is a protein that in humans is encoded by the RBL1 gene. Ewen et al. (1991) used a partial cDNA for human p107 to map the gene to 20q11. by fluorescence in situ hybridization. Huppi et al. (1996) found that the mouse Rbl1 gene maps to the distal end of chromosome 2, as does also the E2f1 gene. The protein encoded by this gene is similar in sequence and possibly function to the product of the retinoblastoma 1 (RB1) gene. The RB1 gene product is a tumor suppressor protein that appears to be involved in cell cycle regulation, as it is phosphorylated in the S to M phase transition and is dephosphorylated in the G1 phase of the cell cycle. Both the RB1 protein and the product of this gene can form a complex with adenovirus E1A protein and SV40 Large T-antigen, with the SV40 large T-antigen binding only to the unphosphorylated form of each protein. In addition, both proteins can inhibit the transcription of cell cycle genes containing E2F binding sites in their promoters. Due to the sequence and biochemical similarities with the RB1 protein, it is thought that the protein encoded by this gene may also be a tumor suppressor. Two transcript variants encoding different isoforms have been found for this gene.

Overview

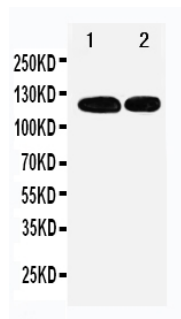
Product Name	Anti-p107/RBL1 Antibody Picoband®
Reactive Species	Human, Mouse, Rat
Description	Boster Bio Anti-p107/RBL1 Antibody catalog # PA1894. Tested in IHC, WB applications. This antibody reacts with Human, Mouse, Rat. The brand Picoband indicates this is a premium antibody that guarantees superior quality, high affinity, and strong signals with minimal background in Western blot applications. Only our best-performing antibodies are designated as Picoband, ensuring unmatched performance.
Application	IHC, WB
Clonality	Polyclonal
Formulation	Each vial contains antibody formulated with stabilizing components, 0.9mg NaCl, 0.2mg Na ₂ HPO ₄ , 0.05mg Thimerosal, 0.05mg NaN ₃ . *This antibody is supplied in a stabilized formulation. Compatibility with conjugation reactions depends on the chemistry of the conjugation method used. For conjugation methods that are not compatible with the stabilizing components present in this formulation, a carrier-free antibody format is required.
Storage Instructions	Store at -20°C for one year from date of receipt. After reconstitution, at 4°C for one month. It can also be aliquotted and stored frozen at -20°C for six months. Avoid repeated freeze-thaw cycles.
Host	Rabbit
Uniprot ID	P28749

Technical Details

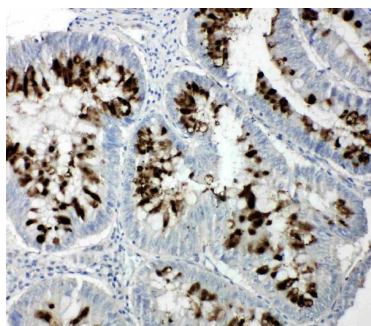
Immunogen	A synthetic peptide corresponding to a sequence at the C-terminus of human p107, identical to the related rat and mouse sequences.
-----------	--

Recommended Detection Systems	Boster recommends Enhanced Chemiluminescent Kit with anti-Rabbit IgG (EK1002) for Western blot, and HRP Conjugated anti-Rabbit IgG Super Vision Assay Kit (SV0002-1) for IHC(P).
Cross Reactivity	No cross-reactivity with other proteins
Isotype	Rabbit IgG
Form	Lyophilized
Concentration	Adding 0.2 ml of distilled water will yield a concentration of 500 ug/ml.
Purification	Immunogen affinity purified.
Suggested Dilutions	Immunohistochemistry (Paraffin-embedded Section), 0.5-1ug/ml, Human, Rat, Mouse Western blot, 0.1-0.5ug/ml, Human, Mouse, Rat

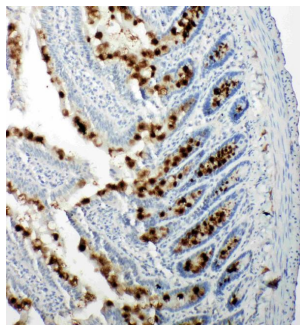
Anti-p107/RBL1 Antibody Picoband® (PA1894) Images



Anti-p107 antibody, PA1894, Western blotting
Lane 1: 239T Cell Lysate
Lane 2: JURKAT Cell Lysate



Anti-p107 antibody, PA1894, IHC(P)
IHC(P): Human Intestinal Cancer Tissue



Anti-p107 antibody, PA1894, IHC(P)
IHC(P): Rat Intestine Tissue

Submit a product review to [Biocompare.com](https://www.biocompare.com)

Submit a review of this product to [Biocompare.com](https://www.biocompare.com) to receive a \$20 Amazon.com giftcard! Your reviews help your fellow scientists make the right decisions. Thank you for your contribution.



Anti-p107/RBL1 Antibody

For Research Use Only. Not for use in diagnostic procedures.