

## Anti-SHC/SHC1 Antibody Picoband®

Catalog Number: PA1897

### About SHC1

SHC1 (SHC-transforming protein 1), also known as SHCA, is a protein that in humans is encoded by the SHC1 gene. SCOP classifies the 3D structure as belonging to the SH2 domain family. By Southern analysis of somatic cell hybrids followed by both isotopic and fluorescence in situ hybridization, Huebner et al. (1994) assigned the SHC1 gene to 1q21. Yulug et al. (1995) used fluorescence in situ hybridization to map the SHC1 gene to 1q21. By the same method, an SHC-related sequence (SHCL1) was mapped to 17q21-q22. By FISH analysis and direct sequencing of vectorette library PCR products, Harun et al. (1997) identified SHC1P1, a 3.2-kb processed pseudogene, in Xq12-q13.1. SHC1P1 is 85% identical to mouse Shc p66. Reporter assays showed FKHL1 transactivates CAT, suggesting a capacity to augment antioxidant scavenging. Nemoto and Finkel (2002) concluded that there is an important functional relationship between forkhead proteins (e.g., FKHL1), SHC1, and intracellular oxidants, all of which are thought to be involved in the aging process in worms and mammals.

### Overview

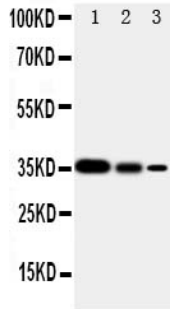
Product Name	Anti-SHC/SHC1 Antibody Picoband®
Reactive Species	Human, Mouse, Rat
Description	Boster Bio Anti-SHC/SHC1 Antibody catalog # PA1897. Tested in IHC, IHC-F, ICC, WB applications. This antibody reacts with Human, Mouse, Rat. The brand Picoband indicates this is a premium antibody that guarantees superior quality, high affinity, and strong signals with minimal background in Western blot applications. Only our best-performing antibodies are designated as Picoband, ensuring unmatched performance.
Application	IHC, IHC-F, ICC, WB
Clonality	Polyclonal
Formulation	Each vial contains antibody formulated with stabilizing components, 0.9mg NaCl, 0.2mg Na <sub>2</sub> HPO <sub>4</sub> , 0.05mg Thimerosal, 0.05mg NaN <sub>3</sub> . *This antibody is supplied in a stabilized formulation. Compatibility with conjugation reactions depends on the chemistry of the conjugation method used. For conjugation methods that are not compatible with the stabilizing components present in this formulation, a carrier-free antibody format is required.
Storage Instructions	Store at -20°C for one year from date of receipt. After reconstitution, at 4°C for one month. It can also be aliquotted and stored frozen at -20°C for six months. Avoid repeated freeze-thaw cycles.
Host	Rabbit
Uniprot ID	P29353

### Technical Details

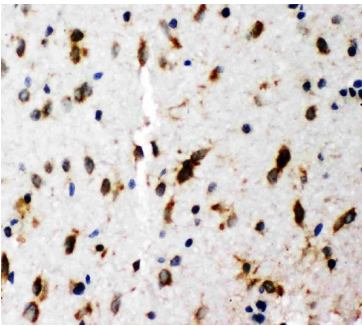
Immunogen	A synthetic peptide corresponding to a sequence at the C-terminus of human SHC, different from the related rat and mouse sequences by two amino acids.
-----------	--

Recommended Detection Systems	Boster recommends Enhanced Chemiluminescent Kit with anti-Rabbit IgG (EK1002) for Western blot, and HRP Conjugated anti-Rabbit IgG Super Vision Assay Kit (SV0002-1) for IHC(P), IHC(F) and ICC.
Cross Reactivity	No cross-reactivity with other proteins
Isotype	Rabbit IgG
Form	Lyophilized
Concentration	Adding 0.2 ml of distilled water will yield a concentration of 500 ug/ml.
Purification	Immunogen affinity purified.
Suggested Dilutions	Immunocytochemistry , 0.5-1ug/ml, Human, - Immunohistochemistry (Frozen Section), 0.5-1ug/ml, Rat, Human, Mouse Immunohistochemistry (Paraffin-embedded Section), 0.5-1ug/ml, Human, Rat, Mouse Western blot, 0.1-0.5ug/ml, Human, Rat, Mouse

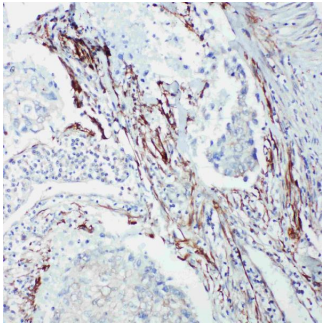
## Anti-SHC/SHC1 Antibody Picoband® (PA1897) Images



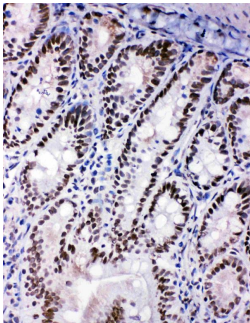
Anti-SHC antibody, PA1897, Western blotting  
Recombinant Protein Detection Source: E.coli derived -recombinant human SHC1, 35.0KD(162aa tag+D424-P578)  
Lane 1: Recombinant Human SHC1 Proteins 10ng  
Lane 2: Recombinant Human SHC1 Proteins 5ng  
Lane 3: Recombinant Human SHC1 Proteins 2.5ng



Anti-SHC antibody, PA1897, IHC(P)IHC(P): Rat Brain Tissue

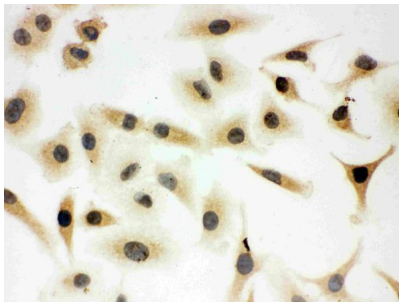
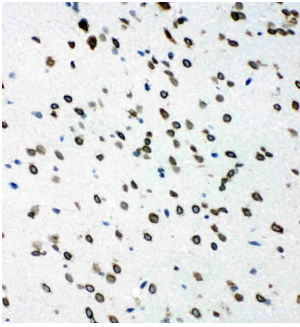


Anti-SHC antibody, PA1897, IHC(P)IHC(P): Human Lung Cancer Tissue

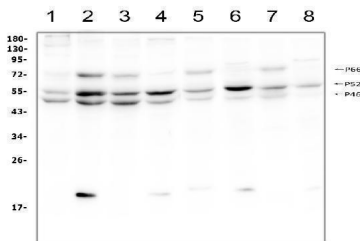


Anti-SHC antibody, PA1897, IHC(F)IHC(F): Rat Intestine Tissue

Anti-SHC antibody, PA1897, IHC(F)IHC(F): Rat Brain Tissue



Anti-SHC antibody, PA1897, ICC/IC: A549 Cell



Western blot analysis of SHC using anti-SHC antibody (PA1897). Electrophoresis was performed on a 5-20% SDS-PAGE gel at 70V (Stacking gel) / 90V (Resolving gel) for 2-3 hours. The sample well of each lane was loaded with 50ug of sample under reducing conditions. Lane 1: human A431 whole cell lysate, Lane 2: human Hela whole cell lysate, Lane 3: human HepG2 whole cell lysate, Lane 4: human Jurkat whole cell lysate, Lane 5: rat C6 whole cell lysate, Lane 6: mouse thymus tissue lysate, Lane 7: mouse RAW246.7 whole cell lysate, Lane 8: mouse NIH3T3 whole cell lysate. After Electrophoresis, proteins were transferred to a Nitrocellulose membrane at 150mA for 50-90 minutes. Blocked the membrane with 5% Non-fat Milk/ TBS for 1.5 hour at RT. The membrane was incubated with rabbit anti-SHC antigen affinity purified polyclonal antibody (Catalog # PA1897) at 0.5 ug/mL overnight at 4°C, then washed with TBS-0.1%Tween 3 times with 5 minutes each and probed with a goat anti-rabbit IgG-HRP secondary antibody at a dilution of 1:10000 for 1.5 hour at RT. The signal is developed using an Enhanced Chemiluminescent detection (ECL) kit (Catalog # EK1002) with Tanon 5200 system. Specific bands were detected for SHC at approximately 46, 52, 66KD. The expected band size for SHC are at 46, 52, 66KD.

Submit a product review to [Biocompare.com](https://www.biocompare.com)

Submit a review of this product to [Biocompare.com](https://www.biocompare.com) to receive a \$20 Amazon.com giftcard! Your reviews help your fellow scientists make the right decisions. Thank you for your contribution.



Anti-SHC/SHC1 Antibody

For Research Use Only. Not for use in diagnostic procedures.