

## Anti-Delta-like protein 3 DLL3 Antibody Picoband®

Catalog Number: PA1912

### About DLL3

DLL3 (DELTA-LIKE 3) also known as DELTA, DROSOPHILA, HOMOLOG OF, is a protein which in humans is encoded by the DLL3 gene. This gene encodes a member of the delta protein ligand family. This family functions as Notch ligands that are characterized by a DSL domain, EGF repeats, and a transmembrane domain. Mutation in the mouse delta-like 3 gene (DII3), which is homologous to the Notch-ligand delta in Drosophila, results in the mouse 'pudgy' phenotype. The human DLL3 gene was identified within a critical interval, mapped in 2 consanguineous Arab-Israeli and Pakistani SCDO1 pedigrees, of 7.8 cM at 19q13.1-q13.3 between D19S570 and D19S908 (Bulman et al., 2000). Dunwoodie et al. (1997) presented results suggesting that mouse DII3 may complement the function of other delta homologs during early pattern formation in the mouse embryo. In humans, the fact that mutations in genes required for oscillation, such as DLL3, result in abnormal segmentation of the vertebral column suggests that the segmentation clock also acts during human embryonic development. This residue is highly conserved in Delta proteins from Drosophila to humans, and the substitution of a charged polar for a nonpolar residue may disrupt the conformation of the DLL3 protein.

### Overview

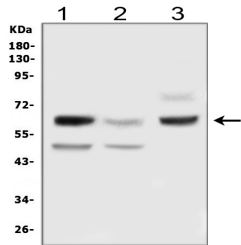
Product Name	Anti-Delta-like protein 3 DLL3 Antibody Picoband®
Reactive Species	Human
Description	Boster Bio Anti-Delta-like protein 3 DLL3 Antibody catalog # PA1912. Tested in WB applications. This antibody reacts with Human. The brand Picoband indicates this is a premium antibody that guarantees superior quality, high affinity, and strong signals with minimal background in Western blot applications. Only our best-performing antibodies are designated as Picoband, ensuring unmatched performance.
Application	WB
Clonality	Polyclonal
Formulation	Each vial contains antibody formulated with stabilizing components, 0.9mg NaCl, 0.2mg Na2HPO4, 0.05mg Thimerosal, 0.05mg NaN3. *This antibody is supplied in a stabilized formulation. Compatibility with conjugation reactions depends on the chemistry of the conjugation method used. For conjugation methods that are not compatible with the stabilizing components present in this formulation, a carrier-free antibody format is required.
Storage Instructions	Store at -20°C for one year from date of receipt. After reconstitution, at 4°C for one month. It can also be aliquotted and stored frozen at -20°C for six months. Avoid repeated freeze-thaw cycles.
Host	Rabbit
Uniprot ID	Q9NYJ7

### Technical Details

Immunogen	A synthetic peptide corresponding to a sequence at the C-terminus of human DLL3.
-----------	--

Recommended Detection Systems	Boster recommends Enhanced Chemiluminescent Kit with anti-Rabbit IgG (EK1002) for Western blot.
Cross Reactivity	No cross-reactivity with other proteins
Isotype	Rabbit IgG
Form	Lyophilized
Concentration	Adding 0.2 ml of distilled water will yield a concentration of 500 ug/ml.
Purification	Immunogen affinity purified.
Suggested Dilutions	Western blot, 0.1-0.5ug/ml, Human

## Anti-Delta-like protein 3 DLL3 Antibody Picoband® (PA1912) Images



Western blot analysis of DLL3 using anti-DLL3 antibody (PA1912). Electrophoresis was performed on a 5-20% SDS-PAGE gel at 70V (Stacking gel) / 90V (Resolving gel) for 2-3 hours. The sample well of each lane was loaded with 50ug of sample under reducing conditions. Lane 1: rat brain tissue lysates Lane 2: mouse brain tissue lysates Lane 3: human HEK293 whole cell lysates After Electrophoresis, proteins were transferred to a Nitrocellulose membrane at 150mA for 50-90 minutes. Blocked the membrane with 5% Non-fat Milk/TBS for 1.5 hour at RT. The membrane was incubated with rabbit anti-DLL3 antigen affinity purified polyclonal antibody (Catalog # PA1912) at 0.5 ug/mL overnight at 4°C, then washed with TBS-0.1%Tween 3 times with 5 minutes each and probed with a goat anti-rabbit IgG-HRP secondary antibody at a dilution of 1:10000 for 1.5 hour at RT. The signal is developed using an Enhanced Chemiluminescent detection (ECL) kit (Catalog # EK1002) with Tanon 5200 system. A specific band was detected for DLL3 at approximately 65KD. The expected band size for DLL3 is at 65KD.

### Submit a product review to Biocompare.com

Submit a review of this product to Biocompare.com to receive a \$20 Amazon.com giftcard! Your reviews help your fellow scientists make the right decisions. Thank you for your contribution.



Anti-Delta-like protein 3 DLL3 Antibody

For Research Use Only. Not for use in diagnostic procedures.