

## Anti-Flt3 ligand/FLT3LG Antibody

Catalog Number: PA1914

### About FLT3LG

FLT3LG (FMS-Related Tyrosine Kinase 3 Ligand) also called FLT3 LIGAND, FL or FLT3L, is a protein which in humans is encoded by the FLT3LG gene. FLT3LG controls the development of DCs and is particularly important for plasmacytoid DCs and CD8-positive classical DCs and their CD103-positive tissue counterparts. Flt3 ligand (FL) is a hematopoietic four helical bundle cytokine. It is structurally homologous to stem cell factor (SCF) and colony stimulating factor 1 (CSF-1). In synergy with other growth factors, Flt3 ligand stimulates the proliferation and differentiation of various blood cell progenitors. Lyman et al. (1993) found that Flt3 ligand stimulated proliferation of hematopoietic progenitor cells isolated from mouse fetal liver or adult mouse bone marrow. Hannum et al. (1994) concluded that FL enhances the response of stem and primitive progenitor cells to other growth factors to generate all myeloid lineages except erythroid cells. Assays of C-terminally truncated FL proteins confirmed that the N-terminal half conferred FL activity. Depletion of the Pi3k -Mtor negative regulator Pten facilitated Flt3l-driven DC development in culture.

### Overview

Product Name	Anti-Flt3 ligand/FLT3LG Antibody
Reactive Species	Human
Description	Boster Bio Anti-Flt3 ligand/FLT3LG Antibody catalog # PA1914. Tested in WB applications. This antibody reacts with Human.
Application	WB
Clonality	Polyclonal
Formulation	Each vial contains 5mg BSA, 0.9mg NaCl, 0.2mg Na2HPO4, 0.05mg Thimerosal, 0.05mg NaN3.
Storage Instructions	Store at -20°C for one year from date of receipt. After reconstitution, at 4°C for one month. It can also be aliquotted and stored frozen at -20°C for six months. Avoid repeated freeze-thaw cycles.
Host	Rabbit
Uniprot ID	P49771

### Technical Details

Immunogen	A synthetic peptide corresponding to a sequence at the C-terminus of human Flt-3ligand.
Recommended Detection Systems	Boster recommends Enhanced Chemiluminescent Kit with anti-Rabbit IgG (EK1002) for Western blot.
Cross Reactivity	No cross-reactivity with other proteins
Isotype	Rabbit IgG
Form	Lyophilized

Concentration	Adding 0.2 ml of distilled water will yield a concentration of 500 ug/ml.
Purification	Immunogen affinity purified.
Suggested Dilutions	<p>Dilute the sample so that the expected range of concentrations fall within the detection range of this kit.</p> <p>If the expected range of concentration is unknown, a pilot test should be conducted to decide the optimal dilution ratio for your samples.</p> <p>Some PubMed article(s) citing the expression level of this target are as follows:</p> <p>Boster Bio's internal QC testing used: Western blot, 0.1-0.5ug/ml, Human</p>

## Anti-Flt3 ligand/FLT3LG Antibody (PA1914) Images

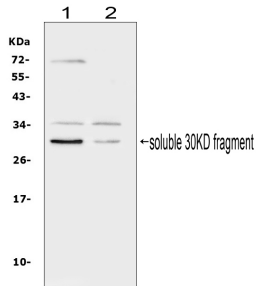


Figure 1. Western blot analysis of FLT3LG using anti-FLT3LG antibody (PA1914).

Electrophoresis was performed on a 5-20% SDS-PAGE gel at 70V (Stacking gel) / 90V (Resolving gel) for 2-3 hours. The sample well of each lane was loaded with 50ug of sample under reducing conditions.

Lane 1: human PC-3 whole cell lysates,

Lane 2: human Caco-2 whole cell lysates.

After Electrophoresis, proteins were transferred to a Nitrocellulose membrane at 150mA for 50-90 minutes. Blocked the membrane with 5% Non-fat Milk/ TBS for 1.5 hour at RT. The membrane was incubated with rabbit anti-FLT3LG antigen affinity purified polyclonal antibody (Catalog # PA1914) at 0.5 ug/mL overnight at 4°C, then washed with TBS-0.1%Tween 3 times with 5 minutes each and probed with a goat anti-rabbit IgG-HRP secondary antibody at a dilution of 1:10000 for 1.5 hour at RT. The signal is developed using an Enhanced Chemiluminescent detection (ECL) kit (Catalog # EK1002) with Tanon 5200 system. A specific band was detected for FLT3LG at approximately 30KD. The expected band size for FLT3LG is at 26KD.

### Submit a product review to Biocompare.com

Submit a review of this product to Biocompare.com to receive a \$20 Amazon.com giftcard! Your reviews help your fellow scientists make the right decisions. Thank you for your contribution.



Anti-Flt3 ligand/FLT3LG Antibody