

## Anti-MEK6/MAP2K6 Antibody Picoband®

Catalog Number: PA1921

### About MAP2K6

MAP2K6 (Mitogen-activated protein kinase kinase 6), also known as MAP kinase kinase 6 (MAPKK 6) or MAPK/ERK kinase 6 is an enzyme that in humans is encoded by the MAP2K6 gene. It is located on chromosome 17. MAPKK 6 is a member of the dual specificity protein kinase family, which functions as a mitogen-activated protein (MAP) kinase kinase. MAP kinases, also known as extracellular signal-regulated kinases (ERKs), act as an integration point for multiple biochemical signals. This protein phosphorylates and activates p38 MAP kinase in response to inflammatory cytokines or environmental stress. As an essential component of p38 MAP kinase mediated signal transduction pathway, this gene is involved in many cellular processes such as stress-induced cell cycle arrest, transcription activation and apoptosis.

### Overview

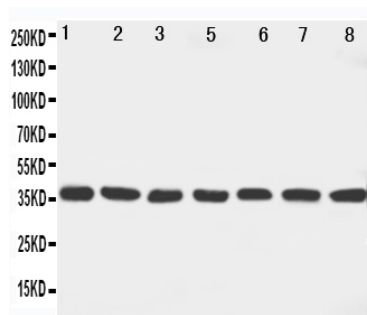
Product Name	Anti-MEK6/MAP2K6 Antibody Picoband®
Reactive Species	Human, Mouse, Rat
Description	Boster Bio Anti-MEK6/MAP2K6 Antibody catalog # PA1921. Tested in WB applications. This antibody reacts with Human, Mouse, Rat. The brand Picoband indicates this is a premium antibody that guarantees superior quality, high affinity, and strong signals with minimal background in Western blot applications. Only our best-performing antibodies are designated as Picoband, ensuring unmatched performance.
Application	WB
Clonality	Polyclonal
Formulation	Each vial contains antibody formulated with stabilizing components, 0.9mg NaCl, 0.2mg Na <sub>2</sub> HPO <sub>4</sub> , 0.05mg Thimerosal, 0.05mg NaN <sub>3</sub> . *This antibody is supplied in a stabilized formulation. Compatibility with conjugation reactions depends on the chemistry of the conjugation method used. For conjugation methods that are not compatible with the stabilizing components present in this formulation, a carrier-free antibody format is required.
Storage Instructions	Store at -20°C for one year from date of receipt. After reconstitution, at 4°C for one month. It can also be aliquotted and stored frozen at -20°C for six months. Avoid repeated freeze-thaw cycles.
Host	Rabbit
Uniprot ID	P52564

### Technical Details

Immunogen	A synthetic peptide corresponding to a sequence at the N-terminus of human MEK6, identical to the related mouse sequence and different from the related rat sequence by one amino acid.
Recommended Detection Systems	Boster recommends Enhanced Chemiluminescent Kit with anti-Rabbit IgG (EK1002) for Western blot.

Cross Reactivity	No cross-reactivity with other proteins
Isotype	Rabbit IgG
Form	Lyophilized
Concentration	Adding 0.2 ml of distilled water will yield a concentration of 500 ug/ml.
Purification	Immunogen affinity purified.
Suggested Dilutions	Western blot, 0.1-0.5ug/ml, Human, Mouse, Rat

## Anti-MEK6/MAP2K6 Antibody Picoband® (PA1921) Images



Anti-MEK6 antibody, PA1921, Western blotting  
Lane 1: Rat Ovary Tissue Lysate  
Lane 2: Rat Spleen Tissue Lysate  
Lane 3: Rat Brain Tissue Lysate  
Lane 4: Rat Heart Tissue Lysate  
Lane 5: NIH3I3 Cell Lysate  
Lane 6: HELA Cell Lysate  
Lane 7: JRUKAT Cell Lysate  
Lane 8: MCF-7 Cell Lysate

### Submit a product review to Biocompare.com

Submit a review of this product to Biocompare.com to receive a \$20 Amazon.com giftcard! Your reviews help your fellow scientists make the right decisions. Thank you for your contribution.



Anti-MEK6/MAP2K6 Antibody

For Research Use Only. Not for use in diagnostic procedures.