

Anti-Zinc finger protein GLI2 Gli2 Antibody Picoband®

Catalog Number: PA1941

About GLI2

GLI2 (Gli-Kruppel Family Member 2), also called ONCOGENE GLI2, is a protein that in humans is encoded by the GLI2 gene. Sequencing of GLI cDNA clones showed the presence of 5 tandem zinc fingers connected by histidine-cysteine links, which indicated that the gene belongs to the family of zinc finger genes related to Kruppel (Kr). The Drosophila gene Kr is a member of the gap class of segmentation genes; thoracic and anterior abdominal segments fail to form in Kr mutant embryos. By fluorescence in situ hybridization, Matsumoto et al. (1996) refined the assignment of the GLI2 gene to chromosome 2q14. Roessler et al. (2005) showed that GLI2-delta-N exhibited potent transcriptional activity in vivo: overexpression in mouse skin led to the formation of hedgehog-independent epithelial downgrowths resembling basal cell carcinomas, which in humans are associated with constitutive hedgehog signaling.

Overview

Product Name	Anti-Zinc finger protein GLI2 Gli2 Antibody Picoband®
Reactive Species	Human
Description	Boster Bio Anti-Zinc finger protein GLI2 Gli2 Antibody catalog # PA1941. Tested in WB applications. This antibody reacts with Human. The brand Picoband indicates this is a premium antibody that guarantees superior quality, high affinity, and strong signals with minimal background in Western blot applications. Only our best-performing antibodies are designated as Picoband, ensuring unmatched performance.
Application	WB
Clonality	Polyclonal
Formulation	Each vial contains antibody formulated with stabilizing components, 0.9mg NaCl, 0.2mg Na ₂ HPO ₄ , 0.05mg Thimerosal, 0.05mg NaN ₃ . *This antibody is supplied in a stabilized formulation. Compatibility with conjugation reactions depends on the chemistry of the conjugation method used. For conjugation methods that are not compatible with the stabilizing components present in this formulation, a carrier-free antibody format is required.
Storage Instructions	Store at -20°C for one year from date of receipt. After reconstitution, at 4°C for one month. It can also be aliquotted and stored frozen at -20°C for six months. Avoid repeated freeze-thaw cycles.
Host	Rabbit
Uniprot ID	P10070

Technical Details

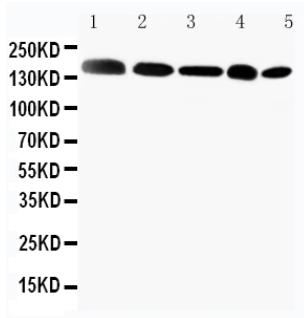
Immunogen	A synthetic peptide corresponding to a sequence at the C-terminus of human Gli2.
Recommended Detection Systems	Boster recommends Enhanced Chemiluminescent Kit with anti-Rabbit IgG (EK1002) for Western blot.

Cross Reactivity	No cross-reactivity with other proteins
Isotype	Rabbit IgG
Form	Lyophilized
Concentration	Adding 0.2 ml of distilled water will yield a concentration of 500 ug/ml.
Purification	Immunogen affinity purified.
Suggested Dilutions	Western blot, 0.1-0.5ug/ml, Human

Anti-Zinc finger protein GLI2 Gli2 Antibody Picoband® (PA1941) Images



Anti-Gli2 antibody, PA1941, Western blottingWB: Human Placenta Tissue Lysate



Anti-Gli2 antibody, PA1941, Western blottingLane 1: MCF-7 Cell LysateLane 2: HELA Cell LysateLane 3: SKOV Cell LysateLane 4: HT1080 Cell LysateLane 5: A549 Cell Lysate

2 Publications Citing This Product

1. PubMed ID: 10.1038/s41374-018-0122-8, O-GlcNAcylation of GLI transcription factors in hyperglycemic conditions augments Hedgehog activity
2. PubMed ID: 25110171, Xiang W, Jiang T, Guo F, Gong C, Yang K, Wu Y, Huang X, Cheng W, Xu K. Oncol Rep. 2014 Oct;32(4):1622-30. Doi: 10.3892/Or.2014.3372. Epub 2014 Jul 31. Hedgehog Pathway Inhibitor-4 Suppresses Malignant Properties Of Chondrosarcoma Cells By Disturbi...

Visit bosterbio.com/anti-gli2-antibody-pa1941-boster.html to see all 2 publications.

Submit a product review to Biocompare.com

Submit a review of this product to Biocompare.com to receive a \$20 Amazon.com giftcard! Your reviews help your fellow scientists make the right decisions. Thank you for your contribution.



Anti-Zinc finger protein GLI2 Gli2 Antibody

For Research Use Only. Not for use in diagnostic procedures.