

## Anti-REA/PHB2 Antibody Picoband®

Catalog Number: PA1951

### About PHB2

PHB2 (Prohibitin 2), also called Repressor of Estrogen Receptor Activity (REA), is a protein that in humans is encoded by the PHB2 gene. The International Radiation Hybrid Mapping Consortium mapped the PHB2 gene to chromosome 12. Montano et al. (1999) showed that REA enhanced the potency of a dominant-negative ER-alpha mutant and antiestrogens as suppressors of ER-alpha activity in Chinese hamster ovary cells. When coexpressed with wildtype ER-alpha or ER-beta (ESR2), REA suppressed activation of a [reporter gene](#) in a dose-dependent manner. REA had no effect on reporter activity in the absence of liganded ER, and it had no effect on the transcriptional activities of other hormone receptors. Mutation analysis showed that an N-terminal domain and a central domain of REA were required for its repressor activity.

### Overview

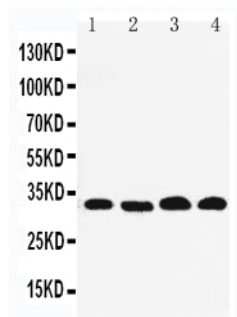
Product Name	Anti-REA/PHB2 Antibody Picoband®
Reactive Species	Human, Mouse, Rat
Description	Boster Bio Anti-REA/PHB2 Antibody catalog # PA1951. Tested in IHC, ICC, WB applications. This antibody reacts with Human, Mouse, Rat. The brand Picoband indicates this is a premium antibody that guarantees superior quality, high affinity, and strong signals with minimal background in Western blot applications. Only our best-performing antibodies are designated as Picoband, ensuring unmatched performance.
Application	IHC, ICC, WB
Clonality	Polyclonal
Formulation	Each vial contains antibody formulated with stabilizing components, 0.9mg NaCl, 0.2mg Na <sub>2</sub> HPO <sub>4</sub> , 0.05mg Thimerosal, 0.05mg NaN <sub>3</sub> . *This antibody is supplied in a stabilized formulation. Compatibility with conjugation reactions depends on the chemistry of the conjugation method used. For conjugation methods that are not compatible with the stabilizing components present in this formulation, a carrier-free antibody format is required.
Storage Instructions	Store at -20°C for one year from date of receipt. After reconstitution, at 4°C for one month. It can also be aliquotted and stored frozen at -20°C for six months. Avoid repeated freeze-thaw cycles.
Host	Rabbit
Uniprot ID	Q99623

### Technical Details

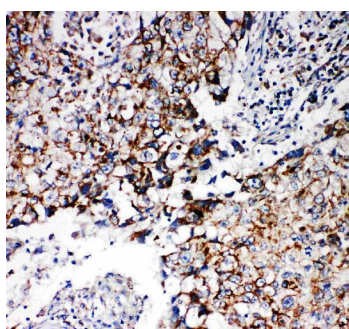
Immunogen	A synthetic peptide corresponding to a sequence in the middle region of human REA, identical to the related rat and mouse sequences.
Recommended Detection Systems	Boster recommends Enhanced Chemiluminescent Kit with anti-Rabbit IgG (EK1002) for Western blot, and HRP Conjugated anti-Rabbit IgG Super Vision Assay Kit (SV0002-1) for IHC(P) and ICC.

Cross Reactivity	No cross-reactivity with other proteins
Isotype	Rabbit IgG
Form	Lyophilized
Concentration	Adding 0.2 ml of distilled water will yield a concentration of 500 ug/ml.
Purification	Immunogen affinity purified.
Suggested Dilutions	Immunocytochemistry , 0.5-1ug/ml, Human, Mouse, Rat Immunohistochemistry (Paraffin-embedded Section), 0.5-1ug/ml, Human, Mouse, Rat Western blot, 0.1-0.5ug/ml, Human, Mouse, Rat

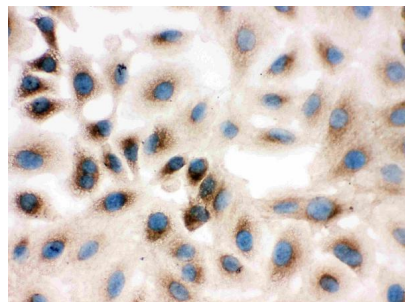
## Anti-REA/PHB2 Antibody Picoband® (PA1951) Images



Anti-REA antibody, PA1951, Western blotting  
Lane 1: PANC Cell Lysate  
Lane 2: COLO320 Cell Lysate  
Lane 3: U87Cell Lysate  
Lane 4: HEPA Cell Lysate



Anti-REA antibody, PA1951, IHC(P)  
IHC(P): Human Lung Cancer Tissue



Anti-REA antibody, PA1951, ICC  
ICC: A549 Cell

### Submit a product review to Biocompare.com

Submit a review of this product to Biocompare.com to receive a \$20 Amazon.com giftcard! Your reviews help your fellow scientists make the right decisions. Thank you for your contribution.



Anti-REA/PHB2 Antibody

For Research Use Only. Not for use in diagnostic procedures.