

Anti-Toll-like receptor 10 TLR10 Antibody Picoband®

Catalog Number: PA1958

About TLR10

TLR10 (Toll-like receptor 10), is a protein that in humans is encoded by the TLR10 gene. The protein encoded by this gene is a member of the Toll-like receptor (TLR) family which plays a fundamental role in pathogen recognition and activation of innate immunity. By genomic sequence analysis, Hasan et al. (2005) determined that the TLR10 gene is clustered with TLR1 and TLR6 on chromosome 4p14. By coimmunoprecipitation analysis, Hasan et al. (2005) found that TLR10 associated with itself and with TLR1 and TLR2, but not with MD2. Signaling studies showed that TLR10 required MYD88, but not TIRAP, TRAM (TICAM2), or TRIF (TICAM1), to activate immune system promoters. Pro674 within the TLR10 TIR domain was required to activate all promoter examined.

Overview

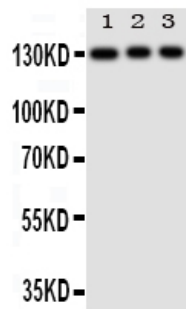
Product Name	Anti-Toll-like receptor 10 TLR10 Antibody Picoband®
Reactive Species	Human
Description	Boster Bio Anti-Toll-like receptor 10 TLR10 Antibody catalog # PA1958. Tested in WB applications. This antibody reacts with Human. The brand Picoband indicates this is a premium antibody that guarantees superior quality, high affinity, and strong signals with minimal background in Western blot applications. Only our best-performing antibodies are designated as Picoband, ensuring unmatched performance.
Application	WB
Clonality	Polyclonal
Formulation	Each vial contains antibody formulated with stabilizing components, 0.9mg NaCl, 0.2mg Na2HPO4, 0.05mg Thimerosal, 0.05mg NaN3. *This antibody is supplied in a stabilized formulation. Compatibility with conjugation reactions depends on the chemistry of the conjugation method used. For conjugation methods that are not compatible with the stabilizing components present in this formulation, a carrier-free antibody format is required.
Storage Instructions	Store at -20°C for one year from date of receipt. After reconstitution, at 4°C for one month. It can also be aliquotted and stored frozen at -20°C for six months. Avoid repeated freeze-thaw cycles.
Host	Rabbit
Uniprot ID	Q9BXR5

Technical Details

Immunogen	A synthetic peptide corresponding to a sequence at the N-terminus of human TLR10.
Recommended Detection Systems	Boster recommends Enhanced Chemiluminescent Kit with anti-Rabbit IgG (EK1002) for Western blot.

Cross Reactivity	No cross-reactivity with other proteins
Isotype	Rabbit IgG
Form	Lyophilized
Concentration	Adding 0.2 ml of distilled water will yield a concentration of 500 ug/ml.
Purification	Immunogen affinity purified.
Suggested Dilutions	Western blot, 0.1-0.5ug/ml, Human

Anti-Toll-like receptor 10 TLR10 Antibody Picoband® (PA1958) Images



Anti-TLR10 antibody, PA1958, Western blotting
Lane 1: HELA Cell Lysate
Lane 2: JURKAT Cell Lysate
Lane 3: CEMJ Cell Lysate

Submit a product review to Biocompare.com

Submit a review of this product to Biocompare.com to receive a \$20 Amazon.com giftcard! Your reviews help your fellow scientists make the right decisions. Thank you for your contribution.



Anti-Toll-like receptor 10 TLR10 Antibody

For Research Use Only. Not for use in diagnostic procedures.