

## Anti-CUEDC2 Antibody

Catalog Number: PA1962

### About CUEDC2

CUEDC2 (Cue Domain-Containing Protein 2) is involved in ubiquitin-and proteasome-mediated degradation of progesterone receptor (PR, or PGR) and estrogen receptor (ER)-alpha. Hartz (2011) mapped the CUEDC2 gene to chromosome 10q24.32 based on an alignment of the CUEDC2 sequence with the genomic sequence (GRCh37). Using coimmunoprecipitation analysis and protein pull-down assays, Zhang et al. (2007) confirmed that CUEDC2 interacted with the PRB isoform of PR. Mutation analysis revealed that the IF domain of PRB and the CUE domain of CUEDC2 were required for the interaction. CUEDC2 reduced PRB protein content and promoted progesterone-induced PRB degradation via the ubiquitin-proteasome pathway.

### Overview

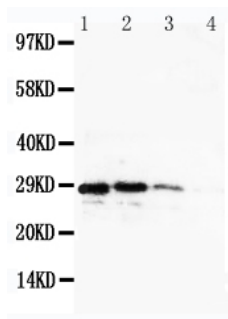
Product Name	Anti-CUEDC2 Antibody
Reactive Species	Human, Mouse, Rat
Description	Boster Bio Anti-CUEDC2 Antibody catalog # PA1962. Tested in IHC, WB applications. This antibody reacts with Human, Mouse, Rat.
Application	IHC, WB
Clonality	Polyclonal
Formulation	Each vial contains 5mg BSA, 0.9mg NaCl, 0.2mg Na2HPO4, 0.05mg Thimerosal, 0.05mg NaN3.
Storage Instructions	Store at -20°C for one year from date of receipt. After reconstitution, at 4°C for one month. It can also be aliquotted and stored frozen at -20°C for six months. Avoid repeated freeze-thaw cycles.
Host	Rabbit
Uniprot ID	Q9H467

### Technical Details

Immunogen	A synthetic peptide corresponding to a sequence at the C-terminus of human CUEDC2, identical to the related mouse sequence, and different from the related rat sequence by one amino acid.
Predicted Reactive Species	Hamster
Recommended Detection Systems	Boster recommends Enhanced Chemiluminescent Kit with anti-Rabbit IgG (EK1002) for Western blot, and HRP Conjugated anti-Rabbit IgG Super Vision Assay Kit (SV0002-1) for IHC(P).
Cross Reactivity	No cross-reactivity with other proteins
Isotype	Rabbit IgG
Form	Lyophilized

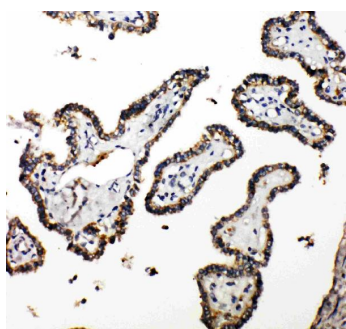
Concentration	Adding 0.2 ml of distilled water will yield a concentration of 500 ug/ml.
Purification	Immunogen affinity purified.
Suggested Dilutions	<p>Dilute the sample so that the expected range of concentrations fall within the detection range of this kit.</p> <p>If the expected range of concentration is unknown, a pilot test should be conducted to decide the optimal dilution ratio for your samples.</p> <p>Some PubMed article(s) citing the expression level of this target are as follows:</p> <p>Boster Bio's internal QC testing used:</p> <p>Immunohistochemistry (Paraffin-embedded Section), 0.5-1ug/ml, Human, Mouse, Rat, By Heat</p> <p>Western blot, 0.1-0.5ug/ml, Human, Mouse, Rat</p>

## Anti-CUEDC2 Antibody (PA1962) Images



Anti-CUEDC2 antibody, PA1962, Western blotting  
Recombinant Protein Detection Source: E.coli derived  
-recombinant human CuEDC2, 28.9KD (162aa tag+  
N197-H287)

Lane 1: Recombinant Human CuEDC2 Protein 10ng  
Lane 2: Recombinant Human CuEDC2 Protein 5ng  
Lane 3: Recombinant Human CuEDC2 Protein 2.5ng  
Lane 4: Recombinant Human CuEDC2 Protein 1.25ng



Anti-CUEDC2 antibody, PA1962, IHC(P)  
IHC(P): Human Thyroid Cancer Tissue

## Submit a product review to Biocompare.com

Submit a review of this product to Biocompare.com to receive a \$20 Amazon.com giftcard! Your reviews help your fellow scientists make the right decisions. Thank you for your contribution.



Anti-CUEDC2 Antibody