

## Anti-LTBR Antibody Picoband®

Catalog Number: PA1968

### About LTBR

LTBR (Lymphotoxin B Receptor), also called TNFCR or LT-BETA-R, is a receptor for lymphotoxin which in humans is encoded by the LTBR gene. By linkage analysis with recombinant inbred mouse strains, Nakamura et al. (1995) demonstrated that the Tnfr locus is close to the Tnfr1 gene on mouse chromosome 6. Presumably, the human homolog is located on 12p13. Silva-Santos et al. (2005) reported that double-positive T cells regulate the differentiation of early thymocyte progenitors and gamma-delta cells by a mechanism dependent on the transcription factor ROR-gamma-t and the lymphotoxin-beta receptor. Lo et al. (2007) identified lymphotoxin and LIGHT (TNFSF14), tumor necrosis factor cytokine family members that are primarily expressed on lymphocytes, as critical regulators of key enzymes that control lipid metabolism.

### Overview

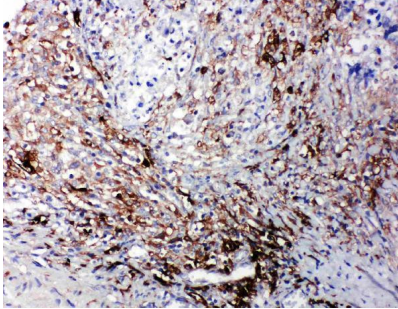
Product Name	Anti-LTBR Antibody Picoband®
Reactive Species	Human
Description	Boster Bio Anti-LTBR Antibody catalog # PA1968. Tested in IHC, WB applications. This antibody reacts with Human. The brand Picoband indicates this is a premium antibody that guarantees superior quality, high affinity, and strong signals with minimal background in Western blot applications. Only our best-performing antibodies are designated as Picoband, ensuring unmatched performance.
Application	IHC, WB
Clonality	Polyclonal
Formulation	Each vial contains antibody formulated with stabilizing components, 0.9mg NaCl, 0.2mg Na2HPO4, 0.05mg Thimerosal, 0.05mg NaN3. *This antibody is supplied in a stabilized formulation. Compatibility with conjugation reactions depends on the chemistry of the conjugation method used. For conjugation methods that are not compatible with the stabilizing components present in this formulation, a carrier-free antibody format is required.
Storage Instructions	Store at -20°C for one year from date of receipt. After reconstitution, at 4°C for one month. It can also be aliquotted and stored frozen at -20°C for six months. Avoid repeated freeze-thaw cycles.
Host	Rabbit
Uniprot ID	P36941

### Technical Details

Immunogen	A synthetic peptide corresponding to a sequence at the C-terminus of human LTBR.
Recommended Detection Systems	Boster recommends Enhanced Chemiluminescent Kit with anti-Rabbit IgG (EK1002) for Western blot, and HRP Conjugated anti-Rabbit IgG Super Vision Assay Kit (SV0002-1) for IHC(P).

Cross Reactivity	No cross-reactivity with other proteins
Isotype	Rabbit IgG
Form	Lyophilized
Concentration	Adding 0.2 ml of distilled water will yield a concentration of 500 ug/ml.
Purification	Immunogen affinity purified.
Suggested Dilutions	Immunohistochemistry (Paraffin-embedded Section), 0.5-1ug/ml, Human Western blot, 0.1-0.5ug/ml, Human

## Anti-LTBR Antibody Picoband® (PA1968) Images



Anti-LTBR antibody, PA1968, IHC(P)IHC(P): Human Intestinal Cancer Tissue



Anti-LTBR antibody, PA1968, Western blotting  
All lanes: Anti LTBR (PA1968) at 0.5ug/ml  
Lane 1: HELA Whole Cell Lysate at 40ug  
Lane 2: A549 Whole Cell Lysate at 40ug  
Predicted bind size: 47KDO  
Observed bind size: 60KD

### Submit a product review to Biocompare.com

Submit a review of this product to Biocompare.com to receive a \$20 Amazon.com giftcard! Your reviews help your fellow scientists make the right decisions. Thank you for your contribution.



Anti-LTBR Antibody

For Research Use Only. Not for use in diagnostic procedures.