

## Anti-TORC1/CRTC1 Antibody Picoband®

Catalog Number: PA1987

### About CRTC1

CRTC1 (CREB-Regulated Transcription Coactivator 1), also known as MECT1, TORC1 or KIAA0616, is a protein that in humans is encoded by the CRTC1 gene. By sequence analysis, Tonon et al. (2003) mapped the CRTC1 gene to chromosome 19p13. Kovacs et al. (2007) found that Torc1 was expressed in adult mouse brain and cultured neurons, and that it translocated to the nucleus upon concomitant activation of calcium and cAMP signaling pathways. Mair et al. (2011) demonstrated that CRTC1 is a direct AMPK target, and interacts with the CREB homolog-1 (CRH1) transcription factor in vivo. The prolongevity effects of activating AMPK or deactivating calcineurin decrease CRTC1 and CRH1 activity and induce transcriptional responses similar to those of CRH1-null worms.

### Overview

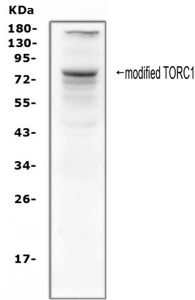
Product Name	Anti-TORC1/CRTC1 Antibody Picoband®
Reactive Species	Human, Rat
Description	Boster Bio Anti-TORC1/CRTC1 Antibody catalog # PA1987. Tested in WB applications. This antibody reacts with Human, Rat. The brand Picoband indicates this is a premium antibody that guarantees superior quality, high affinity, and strong signals with minimal background in Western blot applications. Only our best-performing antibodies are designated as Picoband, ensuring unmatched performance.
Application	WB
Clonality	Polyclonal
Formulation	Each vial contains antibody formulated with stabilizing components, 0.9mg NaCl, 0.2mg Na <sub>2</sub> HPO <sub>4</sub> , 0.05mg Thimerosal, 0.05mg NaN <sub>3</sub> . *This antibody is supplied in a stabilized formulation. Compatibility with conjugation reactions depends on the chemistry of the conjugation method used. For conjugation methods that are not compatible with the stabilizing components present in this formulation, a carrier-free antibody format is required.
Storage Instructions	Store at -20°C for one year from date of receipt. After reconstitution, at 4°C for one month. It can also be aliquotted and stored frozen at -20°C for six months. Avoid repeated freeze-thaw cycles.
Host	Rabbit
Uniprot ID	Q6UUV9

### Technical Details

Immunogen	A synthetic peptide corresponding to a sequence at the C-terminus of human TORC1, different from the related rat and mouse sequences by two amino acids.
Recommended Detection Systems	Boster recommends Enhanced Chemiluminescent Kit with anti-Rabbit IgG (EK1002) for Western blot.

Cross Reactivity	No cross-reactivity with other proteins
Isotype	Rabbit IgG
Form	Lyophilized
Concentration	Adding 0.2 ml of distilled water will yield a concentration of 500 ug/ml.
Purification	Immunogen affinity purified.
Suggested Dilutions	Western blot, 0.1-0.5ug/ml, Human, Rat

## Anti-TORC1/CRTC1 Antibody Picoband® (PA1987) Images



Western blot analysis of TORC1 using anti-TORC1 antibody (PA1987). Electrophoresis was performed on a 5-20% SDS-PAGE gel at 70V (Stacking gel) / 90V (Resolving gel) for 2-3 hours. The sample well of each lane was loaded with 50ug of sample under reducing conditions. Lane 1: human Hela whole cell lysates. After Electrophoresis, proteins were transferred to a Nitrocellulose membrane at 150mA for 50-90 minutes. Blocked the membrane with 5% Non-fat Milk/TBS for 1.5 hour at RT. The membrane was incubated with rabbit anti-TORC1 antigen affinity purified polyclonal antibody (Catalog # PA1987) at 0.5 ug/mL overnight at 4°C, then washed with TBS-0.1%Tween 3 times with 5 minutes each and probed with a goat anti-rabbit IgG-HRP secondary antibody at a dilution of 1:10000 for 1.5 hour at RT. The signal is developed using an Enhanced Chemiluminescent detection (ECL) kit (Catalog # EK1002) with Tanon 5200 system. A specific band was detected for TORC1 at approximately 78KD. The expected band size for TORC1 is at 67KD.

### Submit a product review to Biocompare.com

Submit a review of this product to Biocompare.com to receive a \$20 Amazon.com giftcard! Your reviews help your fellow scientists make the right decisions. Thank you for your contribution.



### Anti-TORC1/CRTC1 Antibody

For Research Use Only. Not for use in diagnostic procedures.