

Anti-TRAF1 Antibody Picoband®

Catalog Number: PA2006

About TRAF1

TRAF1 (TNF Receptor-Associated Factor 1), also called EBI6, is a protein that in humans is encoded by the TRAF1 gene. The protein encoded by this gene is a member of the TNF receptor (TNFR) associated factor (TRAF) protein family. Siemienski et al. (1997) used fluorescence in situ hybridization to map the TRAF1 gene to 9q33-q34. Mosialos et al. (1995) found that LMP1, the EBV-transforming protein, specifically associates with LAP1 (TRAF3) or EBI6 in B lymphoblasts. LMP1 expression redirects LAP1 and EBI6 from scattered cytoplasmic structures to LMP1 plasma membrane patches. Both LAP1 and EBI6 associated with the cytoplasmic domain of p80/TNFR2 in vivo.

Overview

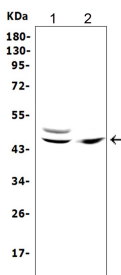
Product Name	Anti-TRAF1 Antibody Picoband®
Reactive Species	Human, Mouse
Description	Boster Bio Anti-TRAF1 Antibody catalog # PA2006. Tested in WB applications. This antibody reacts with Human, Mouse. The brand Picoband indicates this is a premium antibody that guarantees superior quality, high affinity, and strong signals with minimal background in Western blot applications. Only our best-performing antibodies are designated as Picoband, ensuring unmatched performance.
Application	WB
Clonality	Polyclonal
Formulation	Each vial contains antibody formulated with stabilizing components, 0.9mg NaCl, 0.2mg Na ₂ HPO ₄ , 0.05mg Thimerosal, 0.05mg NaN ₃ . *This antibody is supplied in a stabilized formulation. Compatibility with conjugation reactions depends on the chemistry of the conjugation method used. For conjugation methods that are not compatible with the stabilizing components present in this formulation, a carrier-free antibody format is required.
Storage Instructions	Store at -20°C for one year from date of receipt. After reconstitution, at 4°C for one month. It can also be aliquotted and stored frozen at -20°C for six months. Avoid repeated freeze-thaw cycles.
Host	Rabbit
Uniprot ID	Q13077

Technical Details

Immunogen	A synthetic peptide corresponding to a sequence in the middle region of human TRAF1, different from the related mouse sequence by one amino acid.
Recommended Detection Systems	Boster recommends Enhanced Chemiluminescent Kit with anti-Rabbit IgG (EK1002) for Western blot.
Cross Reactivity	No cross-reactivity with other proteins

Isotype	Rabbit IgG
Form	Lyophilized
Concentration	Adding 0.2 ml of distilled water will yield a concentration of 500 ug/ml.
Purification	Immunogen affinity purified.
Suggested Dilutions	Western blot, 0.1-0.5ug/ml, Human, Mouse

Anti-TRAF1 Antibody Picoband® (PA2006) Images



Western blot analysis of TRAF1 using anti-TRAF1 antibody (PA2006). Electrophoresis was performed on a 5-20% SDS-PAGE gel at 70V (Stacking gel) / 90V (Resolving gel) for 2-3 hours. The sample well of each lane was loaded with 50ug of sample under reducing conditions. Lane 1: human Raji whole cell lysates, Lane 2: human T-47D whole cell lysates. After Electrophoresis, proteins were transferred to a Nitrocellulose membrane at 150mA for 50-90 minutes. Blocked the membrane with 5% Non-fat Milk/ TBS for 1.5 hour at RT. The membrane was incubated with rabbit anti-TRAF1 antigen affinity purified polyclonal antibody (Catalog # PA2006) at 0.5 ug/mL overnight at 4°C, then washed with TBS-0.1%Tween 3 times with 5 minutes each and probed with a goat anti-rabbit IgG-HRP secondary antibody at a dilution of 1:10000 for 1.5 hour at RT. The signal is developed using an Enhanced Chemiluminescent detection (ECL) kit (Catalog # EK1002) with Tanon 5200 system. A specific band was detected for TRAF1 at approximately 46KD. The expected band size for TRAF1 is at 46KD.

Submit a product review to Biocompare.com

Submit a review of this product to Biocompare.com to receive a \$20 Amazon.com giftcard! Your reviews help your fellow scientists make the right decisions. Thank you for your contribution.



Anti-TRAF1 Antibody

For Research Use Only. Not for use in diagnostic procedures.