

## Anti-TRAM1 Antibody Picoband®

Catalog Number: PA2010

### About TRAM1

TRAM1 (Translocation-Associating Membrane Protein 1), By crosslinking and reconstitution of canine proteoliposomes, followed by microsequencing and PCR screening of canine kidney and HeLa cell cDNA libraries, Gorlich et al. (1992) isolated cDNAs encoding TRAM (translocating chain-associating membrane protein). The International Radiation Hybrid Mapping Consortium mapped the TRAM gene to chromosome 8. Sequence analysis predicted that human TRAM is a 374-amino acid, 8-pass transmembrane protein that shares 95% amino acid identity with the canine protein. Functional analysis indicated that TRAM influences glycosylation and is stimulatory or required for the translocation of secretory proteins.

### Overview

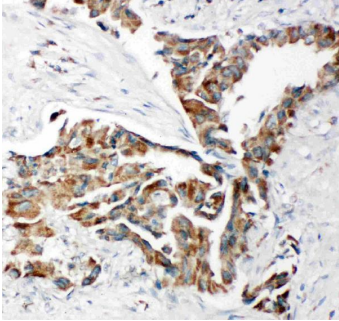
Product Name	Anti-TRAM1 Antibody Picoband®
Reactive Species	Human, Mouse, Rat
Description	Boster Bio Anti-TRAM1 Antibody catalog # PA2010. Tested in IHC, IHC-F, ICC, WB applications. This antibody reacts with Human, Mouse, Rat. The brand Picoband indicates this is a premium antibody that guarantees superior quality, high affinity, and strong signals with minimal background in Western blot applications. Only our best-performing antibodies are designated as Picoband, ensuring unmatched performance.
Application	IHC, IHC-F, ICC, WB
Clonality	Polyclonal
Formulation	Each vial contains antibody formulated with stabilizing components, 0.9mg NaCl, 0.2mg Na <sub>2</sub> HPO <sub>4</sub> , 0.05mg Thimerosal, 0.05mg NaN <sub>3</sub> . *This antibody is supplied in a stabilized formulation. Compatibility with conjugation reactions depends on the chemistry of the conjugation method used. For conjugation methods that are not compatible with the stabilizing components present in this formulation, a carrier-free antibody format is required.
Storage Instructions	Store at -20°C for one year from date of receipt. After reconstitution, at 4°C for one month. It can also be aliquotted and stored frozen at -20°C for six months. Avoid repeated freeze-thaw cycles.
Host	Rabbit
Uniprot ID	Q15629

### Technical Details

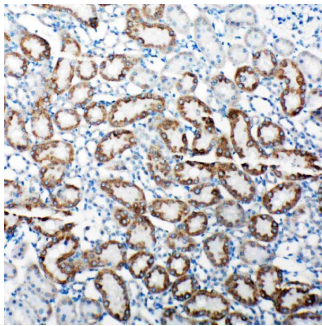
Immunogen	A synthetic peptide corresponding to a sequence at the C-terminus of human TRAM1, identical to the related rat and mouse sequences.
Recommended Detection Systems	Boster recommends Enhanced Chemiluminescent Kit with anti-Rabbit IgG (EK1002) for Western blot, and HRP Conjugated anti-Rabbit IgG Super Vision Assay Kit (SV0002-1) for IHC(P), IHC(F) and

	ICC.
Cross Reactivity	No cross-reactivity with other proteins
Isotype	Rabbit IgG
Form	Lyophilized
Concentration	Adding 0.2 ml of distilled water will yield a concentration of 500 ug/ml.
Purification	Immunogen affinity purified.
Suggested Dilutions	Immunocytochemistry , 0.5-1ug/ml, Human, Mouse, Rat Immunohistochemistry (Frozen Section), 0.5-1ug/ml, Rat, Human, Mouse Immunohistochemistry (Paraffin-embedded Section), 0.5-1ug/ml, Human, Rat, Mouse Western blot, 0.1-0.5ug/ml, Human, Rat, Mouse

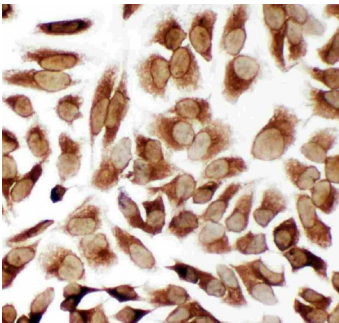
## Anti-TRAM1 Antibody Picoband® (PA2010) Images



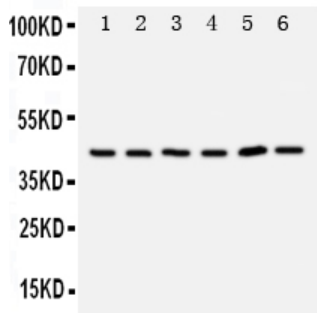
Anti-TRAM1 antibody, PA2010, IHC(P)IHC(P): Human Lung Cancer Tissue



Anti-TRAM1 antibody, PA2010, IHC(P)IHC(P): Rat Kidney Tissue

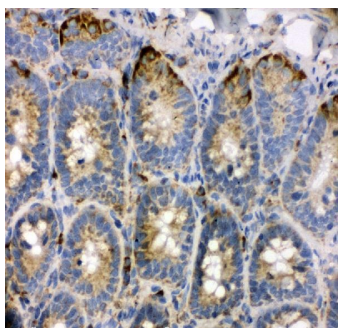


Anti-TRAM1 antibody, PA2010, ICCICC: HELA Cell

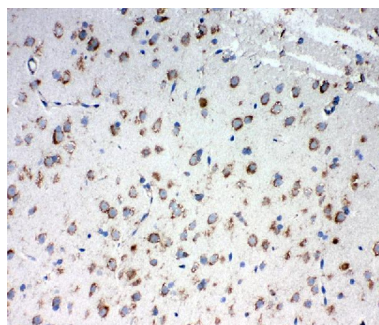


Anti-TRAM1 antibody, PA2010, WB, Lane 1: Rat Brain Tissue Lysate Lane 2: Rat Kidney Tissue Lysate Lane 3: 293T Cell Lysate Lane 4: RAJI Cell Lysate Lane 5: JURKAT Cell Lysate Lane 6: Hela Cell Lysate

IHC analysis of TRAM1 using anti-TRAM1 antibody (PA2010). TRAM1 was detected in frozen section of rat intestine tissues. The tissue section was blocked with 10% goat serum. The tissue section was then incubated with 1ug/ml rabbit anti-TRAM1 Antibody (PA2010) overnight at 4°C. Biotinylated goat anti-rabbit IgG was used as secondary antibody and incubated for 30 minutes at 37°C. The tissue



section was developed using Streptavidin-Biotin-Complex (SABC)(Catalog # SA1022) with DAB as the chromogen.



IHC analysis of TRAM1 using anti-TRAM1 antibody (PA2010). TRAM1 was detected in frozen section of rat brain tissues. The tissue section was blocked with 10% goat serum. The tissue section was then incubated with 1ug/ml rabbit anti-TRAM1 Antibody (PA2010) overnight at 4°C. Biotinylated goat anti-rabbit IgG was used as secondary antibody and incubated for 30 minutes at 37°C. The tissue section was developed using Streptavidin-Biotin-Complex (SABC)(Catalog # SA1022) with DAB as the chromogen.

## Submit a product review to Biocompare.com

Submit a review of this product to Biocompare.com to receive a \$20 Amazon.com giftcard! Your reviews help your fellow scientists make the right decisions. Thank you for your contribution.



### Anti-TRAM1 Antibody

For Research Use Only. Not for use in diagnostic procedures.