

Anti-TRAM2 Antibody Picoband®

Catalog Number: PA2011

About Tram2

TRAM2 (Translocation-Associating Membrane Protein 2), also called KIAA0057, is a protein that in humans is encoded by the TRAM2 gene. TRAM2 is a component of the translocon, a gated macromolecular channel that controls the posttranslational processing of nascent secretory and membrane proteins at the endoplasmic reticulum (ER) membrane. By genomic sequence analysis, Onuchic et al. (1999) mapped the TRAM2 gene to chromosome 6p21.1-p12 near the PKHD1 gene. Upon activation, quiescent hepatic stellate cells proliferate, change morphologically into myofibroblasts, and increase their synthesis of extracellular matrix proteins. Stefanovic et al. (2004) demonstrated that both TRAM2 and collagen type I are upregulated in activated rat and human hepatic stellate cells.

Overview

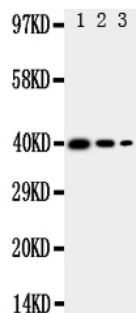
Product Name	Anti-TRAM2 Antibody Picoband®
Reactive Species	Human, Mouse, Rat
Description	Boster Bio Anti-TRAM2 Antibody catalog # PA2011. Tested in WB applications. This antibody reacts with Human, Mouse, Rat. The brand Picoband indicates this is a premium antibody that guarantees superior quality, high affinity, and strong signals with minimal background in Western blot applications. Only our best-performing antibodies are designated as Picoband, ensuring unmatched performance.
Application	WB
Clonality	Polyclonal
Formulation	Each vial contains antibody formulated with stabilizing components, 0.9mg NaCl, 0.2mg Na ₂ HPO ₄ , 0.05mg Thimerosal, 0.05mg NaN ₃ . *This antibody is supplied in a stabilized formulation. Compatibility with conjugation reactions depends on the chemistry of the conjugation method used. For conjugation methods that are not compatible with the stabilizing components present in this formulation, a carrier-free antibody format is required.
Storage Instructions	Store at -20°C for one year from date of receipt. After reconstitution, at 4°C for one month. It can also be aliquotted and stored frozen at -20°C for six months. Avoid repeated freeze-thaw cycles.
Host	Rabbit
Uniprot ID	Q924Z5

Technical Details

Immunogen	A synthetic peptide corresponding to a sequence at the C-terminus of mouse TRAM2, identical to the related rat sequence, and different from the related human sequence by one amino acid.
Recommended Detection Systems	Boster recommends Enhanced Chemiluminescent Kit with anti-Rabbit IgG (EK1002) for Western blot.

Cross Reactivity	No cross-reactivity with other proteins
Isotype	Rabbit IgG
Form	Lyophilized
Concentration	Adding 0.2 ml of distilled water will yield a concentration of 500 ug/ml.
Purification	Immunogen affinity purified.
Suggested Dilutions	Western blot, 0.1-0.5ug/ml, Mouse, Human, Rat

Anti-TRAM2 Antibody Picoband® (PA2011) Images



Anti-TRAM2 antibody, PA2011, Western blotting
Recombinant Protein Detection Source: E.coli derived -recombinant Mouse TRAM2, 39.0KD (162aa tag+R190-P370)
Lane 1: Recombinant Mouse TRAM2 Protein 10ng
Lane 2: Recombinant Mouse TRAM2 Protein 5ng
Lane 3: Recombinant Mouse TRAM2 Protein 2.5ng

Submit a product review to Biocompare.com

Submit a review of this product to Biocompare.com to receive a \$20 Amazon.com giftcard! Your reviews help your fellow scientists make the right decisions. Thank you for your contribution.



Anti-TRAM2 Antibody

For Research Use Only. Not for use in diagnostic procedures.