

Anti-BMPR1B Antibody

Catalog Number: PA2017

About BMPR1B

BMPR1B (Bone Morphogenetic Protein Receptor Type IB), also known as ALK6, is a protein which in humans is encoded by the BMPR1B gene. BMPR1B is a member of the bone morphogenetic protein (BMP) receptor family of transmembrane serine/threonine kinases. The ligands of this receptor are BMPs, which are members of the TGF-beta superfamily. BMPs are involved in endochondral bone formation and embryogenesis. These proteins transduce their signals through the formation of heteromeric complexes of 2 different types of serine (threonine) kinase receptors: type I receptors of about 50-55 kD and type II receptors of about 70-80 kD. Type II receptors bind ligands in the absence of type I receptors, but they require their respective type I receptors for signaling, whereas type I receptors require their respective type II receptors for ligand binding. By analysis of a monochromosome hybrid mapping panel and by FISH, Astrom et al. (1999) mapped the BMPR1B gene to chromosome 4q22-q24. Ide et al. (1997) compared BMP receptor expression in normal and cancerous prostate tissues. While BMPR1A and BMPR2 were expressed at similar levels in all prostate tissues, BMPR1B was expressed at a significantly reduced level in cancerous prostate tissue.

Overview

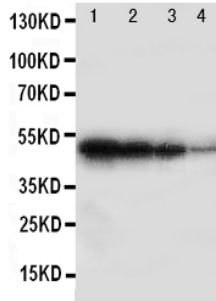
Product Name	Anti-BMPR1B Antibody
Reactive Species	Human, Mouse, Rat
Description	Boster Bio Anti-BMPR1B Antibody catalog # PA2017. Tested in WB applications. This antibody reacts with Human, Mouse, Rat.
Application	WB
Clonality	Polyclonal
Formulation	Each vial contains 5mg BSA, 0.9mg NaCl, 0.2mg Na2HPO4, 0.05mg Thimerosal, 0.05mg NaN3.
Storage Instructions	Store at -20°C for one year from date of receipt. After reconstitution, at 4°C for one month. It can also be aliquotted and stored frozen at -20°C for six months. Avoid repeated freeze-thaw cycles.
Host	Rabbit
Uniprot ID	O00238

Technical Details

Immunogen	A synthetic peptide corresponding to a sequence in the middle region of human BMPR1B, different from the related rat and mouse sequences by one amino acid.
Recommended Detection Systems	Boster recommends Enhanced Chemiluminescent Kit with anti-Rabbit IgG (EK1002) for Western blot.
Cross Reactivity	No cross-reactivity with other proteins
Isotype	Rabbit IgG

Form	Lyophilized
Concentration	Adding 0.2 ml of distilled water will yield a concentration of 500 ug/ml.
Purification	Immunogen affinity purified.
Suggested Dilutions	<p>Dilute the sample so that the expected range of concentrations fall within the detection range of this kit.</p> <p>If the expected range of concentration is unknown, a pilot test should be conducted to decide the optimal dilution ratio for your samples.</p> <p>Some PubMed article(s) citing the expression level of this target are as follows:</p> <p>Boster Bio's internal QC testing used: Western blot, 0.1-0.5ug/ml, Human, Mouse, Rat</p>

Anti-BMPR1B Antibody (PA2017) Images



Anti-BMPR1B antibody, PA2017, Western blotting
Recombinant Protein Detection Source: E.coli derived
-recombinant Human BMPR1B, 49.0KD (162aa
tag+D17-D289)
Lane 1: Recombinant Human BMPR1B Protein 10ng
Lane 2: Recombinant Human BMPR1B Protein 5ng
Lane 3: Recombinant Human BMPR1B Protein 2.5ng
Lane 4: Recombinant Human BMPR1B Protein 1.25ng

Submit a product review to Biocompare.com

Submit a review of this product to Biocompare.com to receive a \$20 Amazon.com giftcard! Your reviews help your fellow scientists make the right decisions. Thank you for your contribution.



Anti-BMPR1B Antibody