

## Anti-CETP Antibody Picoband®

Catalog Number: PA2019

### About CETP

CETP (Cholesteryl Ester Transfer Protein Plasma), is a plasma protein that facilitates the transport of cholesteryl esters and triglycerides between the lipoproteins. CETP is also known as lipid transfer protein I (Day et al., 1994). Sparkes et al. (1987) used a CETP probe against DNA from a human/mouse somatic cell hybrid panel to assign the CETP gene to chromosome 16. Because the role of CETP in atherosclerosis remained unclear, Okamoto et al. (2000) attempted to develop a potent, specific CETP inhibitor. One inhibitor, JTT-705, forms a disulfide bond with CETP and increases high density lipoprotein (HDL) cholesterol, decreases non-HDL cholesterol, and inhibits the progression of atherosclerosis in rabbits.

### Overview

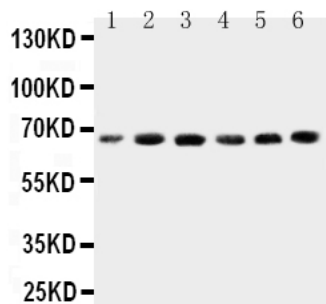
|                      |   |
|----------------------|---|
| Product Name         | Anti-CETP Antibody Picoband®  |
| Reactive Species     | Human   |
| Description          | Boster Bio Anti-CETP Antibody catalog # PA2019. Tested in WB applications. This antibody reacts with Human. The brand Picoband indicates this is a premium antibody that guarantees superior quality, high affinity, and strong signals with minimal background in Western blot applications. Only our best-performing antibodies are designated as Picoband, ensuring unmatched performance.   |
| Application          | WB  |
| Clonality            | Polyclonal  |
| Formulation          | Each vial contains antibody formulated with stabilizing components, 0.9mg NaCl, 0.2mg Na <sub>2</sub> HPO <sub>4</sub> , 0.05mg Thimerosal, 0.05mg NaN <sub>3</sub> .<br>*This antibody is supplied in a stabilized formulation. Compatibility with conjugation reactions depends on the chemistry of the conjugation method used. For conjugation methods that are not compatible with the stabilizing components present in this formulation, a carrier-free antibody format is required. |
| Storage Instructions | Store at -20°C for one year from date of receipt. After reconstitution, at 4°C for one month. It can also be aliquotted and stored frozen at -20°C for six months. Avoid repeated freeze-thaw cycles.   |
| Host                 | Rabbit  |
| Uniprot ID           | P11597  |

### Technical Details

|                               |   |
|-------------------------------|---|
| Immunogen                     | A synthetic peptide corresponding to a sequence at the C-terminus of human CETP.                |
| Recommended Detection Systems | Boster recommends Enhanced Chemiluminescent Kit with anti-Rabbit IgG (EK1002) for Western blot. |
| Cross Reactivity              | No cross-reactivity with other proteins   |
| Isotype                       | Rabbit IgG  |

|                     |   |
|---------------------|---|
| Form                | Lyophilized   |
| Concentration       | Adding 0.2 ml of distilled water will yield a concentration of 500 ug/ml. |
| Purification        | Immunogen affinity purified.  |
| Suggested Dilutions | Western blot, 0.1-0.5ug/ml, Human   |

## Anti-CETP Antibody Picoband® (PA2019) Images



Anti-CETP antibody, PA2019, Western blotting  
Lane 1: HELA Cell Lysate  
Lane 2: COLO320 Cell Lysate  
Lane 3: HT1080 Cell Lysate  
Lane 4: JURKAT Cell Lysate  
Lane 5: RAJI Cell Lysate  
Lane 6: MCF-7 Cell Lysate

### Submit a product review to Biocompare.com

Submit a review of this product to Biocompare.com to receive a \$20 Amazon.com giftcard! Your reviews help your fellow scientists make the right decisions. Thank you for your contribution.



Anti-CETP Antibody

For Research Use Only. Not for use in diagnostic procedures.