

Anti-Cytochrome P450 2U1 CYP2U1 Antibody Picoband®

Catalog Number: PA2022

About CYP2U1

CYP2U1 (Cytochrome P450, Family 2, Subfamily U, Polypeptide 1), is a protein that in humans is encoded by the CYP2U1 gene. Members of the P450 enzyme family have roles in the tissue-specific conversion of substrates into locally active hormones, [vitamins](#), and signaling molecules, including arachidonic acid derivatives known as eicosanoids. The International Radiation Hybrid Mapping Consortium mapped the CYP2U1 gene to chromosome 4. Chuang et al. (2004) stated that CYP2U1 maps to 4q25. Using recombination experiments in Sf9 insect cells, Chuang et al. (2004) found that CYP2U1 metabolized arachidonic acid, docosahexaenoic acid (DHA), and other long chain fatty acids. Chuang et al. (2004) suggested that CYP2U1 may play a role in brain and immune functions.

Overview

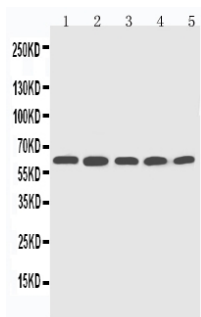
Product Name	Anti-Cytochrome P450 2U1 CYP2U1 Antibody Picoband®
Reactive Species	Human
Description	Boster Bio Anti-Cytochrome P450 2U1 CYP2U1 Antibody catalog # PA2022. Tested in IHC, ICC, WB applications. This antibody reacts with Human. The brand Picoband indicates this is a premium antibody that guarantees superior quality, high affinity, and strong signals with minimal background in Western blot applications. Only our best-performing antibodies are designated as Picoband, ensuring unmatched performance.
Application	IHC, ICC, WB
Clonality	Polyclonal
Formulation	Each vial contains antibody formulated with stabilizing components, 0.9mg NaCl, 0.2mg Na ₂ HPO ₄ , 0.05mg Thimerosal, 0.05mg NaN ₃ . *This antibody is supplied in a stabilized formulation. Compatibility with conjugation reactions depends on the chemistry of the conjugation method used. For conjugation methods that are not compatible with the stabilizing components present in this formulation, a carrier-free antibody format is required.
Storage Instructions	Store at -20°C for one year from date of receipt. After reconstitution, at 4°C for one month. It can also be aliquotted and stored frozen at -20°C for six months. Avoid repeated freeze-thaw cycles.
Host	Rabbit
Uniprot ID	Q7Z449

Technical Details

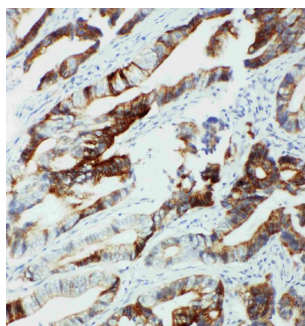
Immunogen	A synthetic peptide corresponding to a sequence at the C-terminus of human CYP2U1.
Recommended Detection Systems	Boster recommends Enhanced Chemiluminescent Kit with anti-Rabbit IgG (EK1002) for Western blot, and HRP Conjugated anti-Rabbit IgG Super Vision Assay Kit (SV0002-1) for IHC(P) and ICC.

Cross Reactivity	No cross-reactivity with other proteins
Isotype	Rabbit IgG
Form	Lyophilized
Concentration	Adding 0.2 ml of distilled water will yield a concentration of 500 ug/ml.
Purification	Immunogen affinity purified.
Suggested Dilutions	Immunohistochemistry (Paraffin-embedded Section), 0.5-1ug/ml, Human Immunocytochemistry , 0.5-1ug/ml, Human, - Western blot, 0.1-0.5ug/ml, Human

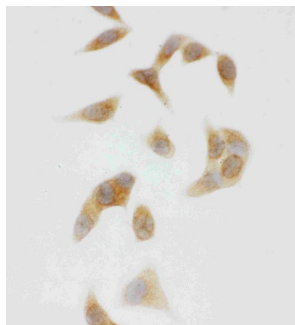
Anti-Cytochrome P450 2U1 CYP2U1 Antibody Picoband® (PA2022) Images



Anti-CYP2U1 antibody, PA2022, Western blotting
Lane 1: HELA Cell Lysate
Lane 2: MCF-7 Cell Lysate
Lane 3: MM453 Cell Lysate
Lane 4: COLO320 Cell Lysate
Lane 5: HT1080 Cell Lysate



Anti-CYP2U1 antibody, PA2022, IHC(P)
IHC(P): Human Intestinal Cancer Tissue



Anti-CYP2U1 antibody, PA2022, ICC
ICC: HELA Cell

Submit a product review to [Biocompare.com](https://www.biocompare.com)

Submit a review of this product to [Biocompare.com](https://www.biocompare.com) to receive a \$20 Amazon.com giftcard! Your reviews help your fellow scientists make the right decisions. Thank you for your contribution.



Anti-Cytochrome P450 2U1 CYP2U1 Antibody

For Research Use Only. Not for use in diagnostic procedures.