

Anti-EIF2S1 Antibody Picoband®

Catalog Number: PA2029

About EIF2S1

EIF2S1 (Eukaryotic Translation Initiation Factor 2, Subunit 1), also called EIF2-alpha, is a protein that in humans is encoded by the EIF2S1 gene. Hartz (2010) mapped the EIF2S1 gene to chromosome 14q23.3 based on an alignment of the EIF2S1 sequence with the genomic sequence (GRCh37). Ernst et al. (1987) stated that protein synthesis is inhibited due to phosphorylation of Eif2-alpha in hemin-deprived rabbit reticulocyte lysates. HeLa cells subjected to heat shock, serum deprivation, or interferon treatment followed by virus infection also show a correlation between EIF2-alpha phosphorylation and translational repression. Jacob et al. (1989) found that the alpha-Pal transcription factor bound to 2 palindromic sites within the EIF2-alpha promoter and was essential for transcription of the EIF2-alpha gene.

Overview

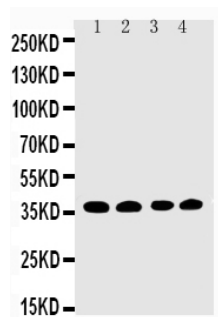
Product Name	Anti-EIF2S1 Antibody Picoband®
Reactive Species	Human
Description	Boster Bio Anti-EIF2S1 Antibody catalog # PA2029. Tested in IHC, WB applications. This antibody reacts with Human. The brand Picoband indicates this is a premium antibody that guarantees superior quality, high affinity, and strong signals with minimal background in Western blot applications. Only our best-performing antibodies are designated as Picoband, ensuring unmatched performance.
Application	IHC, WB
Clonality	Polyclonal
Formulation	Each vial contains antibody formulated with stabilizing components, 0.9mg NaCl, 0.2mg Na2HPO4, 0.05mg Thimerosal, 0.05mg NaN3. *This antibody is supplied in a stabilized formulation. Compatibility with conjugation reactions depends on the chemistry of the conjugation method used. For conjugation methods that are not compatible with the stabilizing components present in this formulation, a carrier-free antibody format is required.
Storage Instructions	Store at -20°C for one year from date of receipt. After reconstitution, at 4°C for one month. It can also be aliquotted and stored frozen at -20°C for six months. Avoid repeated freeze-thaw cycles.
Host	Rabbit
Uniprot ID	P05198

Technical Details

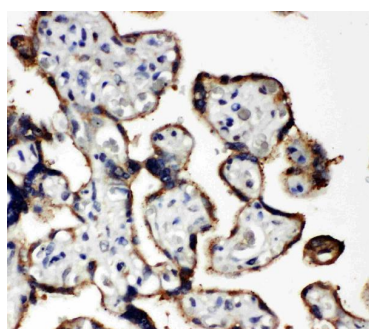
Immunogen	A synthetic peptide corresponding to a sequence in the middle region of human EIF2S1.
Recommended Detection Systems	Boster recommends Enhanced Chemiluminescent Kit with anti-Rabbit IgG (EK1002) for Western blot, and HRP Conjugated anti-Rabbit IgG Super Vision Assay Kit (SV0002-1) for IHC(P).

Cross Reactivity	No cross-reactivity with other proteins
Isotype	Rabbit IgG
Form	Lyophilized
Concentration	Adding 0.2 ml of distilled water will yield a concentration of 500 ug/ml.
Purification	Immunogen affinity purified.
Suggested Dilutions	Immunohistochemistry (Paraffin-embedded Section), 0.5-1ug/ml, Human Western blot, 0.1-0.5ug/ml, Human

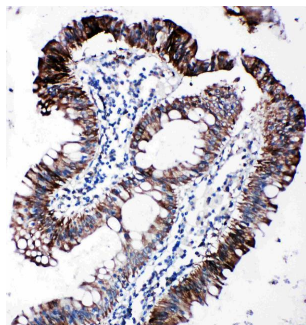
Anti-EIF2S1 Antibody Picoband® (PA2029) Images



Anti-EIF2S1 antibody, PA2029, Western blotting
Lane 1: COLO320 Cell Lysate
Lane 2: CEM Cell Lysate
Lane 3: RAJI Cell Lysate
Lane 4: HT1080 Cell Lysate



Anti-EIF2S1 antibody, PA2029, IHC(P)IHC(P): Human Placenta Tissue



Anti-EIF2S1 antibody, PA2029, IHC(P)IHC(P): Human Intestinal Cancer Tissue

Submit a product review to [Biocompare.com](https://www.biocompare.com)

Submit a review of this product to [Biocompare.com](https://www.biocompare.com) to receive a \$20 Amazon.com giftcard! Your reviews help your fellow scientists make the right decisions. Thank you for your contribution.



Anti-EIF2S1 Antibody

For Research Use Only. Not for use in diagnostic procedures.