

## Anti-integrin beta 4 binding protein/EIF6 Antibody Picoband®

Catalog Number: PA2031

### About EIF6

EIF6 (Eukaryotic Translation Initiation Factor 6), also called EIF3A or ITGB4BP, is a human gene. By fluorescence in situ hybridization, Sanvito et al. (1998) mapped the ITGB4BP gene to 20q11.2. Ceci et al. (2003) demonstrated that the ribosomal 60S subunit is activated by release of EIF6. In the cytoplasm, EIF6 is bound to free 60S but not to 80S subunits. Furthermore, EIF6 interacts in the cytoplasm with RACK1, a receptor for activated protein kinase C. Gandin et al. (2008) demonstrated that mammalian eIF6 is required for efficient initiation of translation in vivo. Eif6-null mouse embryos were lethal at preimplantation. Heterozygous mice had 50% reduction of eIF6 levels in all tissues, and showed reduced mass of hepatic and adipose tissues due to a lower number of cells and to impaired G1/S cell cycle progression.

### Overview

Product Name	Anti-integrin beta 4 binding protein/EIF6 Antibody Picoband®
Reactive Species	Human, Mouse, Rat
Description	Boster Bio Anti-integrin beta 4 binding protein/EIF6 Antibody catalog # PA2031. Tested in IHC, WB applications. This antibody reacts with Human, Mouse, Rat. The brand Picoband indicates this is a premium antibody that guarantees superior quality, high affinity, and strong signals with minimal background in Western blot applications. Only our best-performing antibodies are designated as Picoband, ensuring unmatched performance.
Application	IHC, WB
Clonality	Polyclonal
Formulation	Each vial contains antibody formulated with stabilizing components, 0.9mg NaCl, 0.2mg Na <sub>2</sub> HPO <sub>4</sub> , 0.05mg Thimerosal, 0.05mg NaN <sub>3</sub> . *This antibody is supplied in a stabilized formulation. Compatibility with conjugation reactions depends on the chemistry of the conjugation method used. For conjugation methods that are not compatible with the stabilizing components present in this formulation, a carrier-free antibody format is required.
Storage Instructions	Store at -20°C for one year from date of receipt. After reconstitution, at 4°C for one month. It can also be aliquotted and stored frozen at -20°C for six months. Avoid repeated freeze-thaw cycles.
Host	Rabbit
Uniprot ID	P56537

### Technical Details

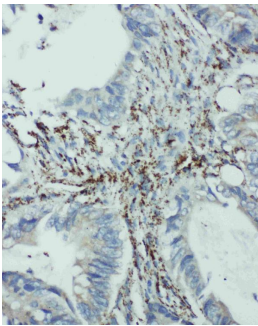
Immunogen	A synthetic peptide corresponding to a sequence in the middle region of human EIF6, different from the related rat and mouse sequences by one amino acid.
Recommended Detection Systems	Boster recommends Enhanced Chemiluminescent Kit with anti-Rabbit IgG (EK1002) for Western blot, and HRP Conjugated anti-Rabbit IgG Super Vision Assay Kit (SV0002-1) for IHC(P) and IHC(F).

Cross Reactivity	No cross-reactivity with other proteins
Isotype	Rabbit IgG
Form	Lyophilized
Concentration	Adding 0.2 ml of distilled water will yield a concentration of 500 ug/ml.
Purification	Immunogen affinity purified.
Suggested Dilutions	Immunohistochemistry (Paraffin-embedded Section), 0.5-1ug/ml, Human, Mouse, Rat Immunohistochemistry (Frozen Section), 0.5-1ug/ml, Human, Mouse, Rat Western blot, 0.1-0.5ug/ml, Human, Mouse, Rat

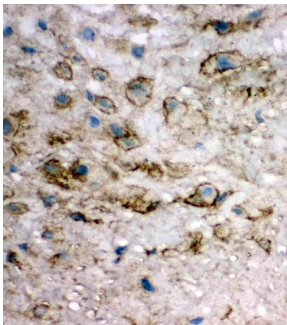
## Anti-integrin beta 4 binding protein/EIF6 Antibody Picoband® (PA2031) Images



Anti-EIF6 antibody, PA2031, Western blotting  
Lane 1: Rat Liver Tissue Lysate  
Lane 2: Rat Kidney Tissue Lysate  
Lane 3: COLO320 Cell Lysate  
Lane 4: SW620 Cell Lysate  
Lane 5: HELA Cell Lysate  
Lane 6: 293T Cell Lysate  
Lane 7: HEPA Cell Lysate



Anti-EIF6 antibody, PA2031, IHC(P)  
IHC(P): Human Intestinal Cancer Tissue



Anti-EIF6 antibody, PA2031, IHC(F)  
IHC(F): Human Placenta Tissue

### Submit a product review to Biocompare.com

Submit a review of this product to Biocompare.com to receive a \$20 Amazon.com giftcard! Your reviews help your fellow scientists make the right decisions. Thank you for your contribution.



Anti-integrin beta 4 binding protein/EIF6 Antibody

For Research Use Only. Not for use in diagnostic procedures.