

Anti-Lipoma-preferred partner LPP Antibody Picoband®

Catalog Number: PA2040

About LPP

LPP (Lim Domain-Containing Preferred Translocation Partner in Lipoma) is a protein that in humans is encoded by the LPP gene. Petit et al. (1996) commented that the LPP-encoded protein should be classified as a novel member of the group 3 proteins of the LIM protein gene family. By partial cDNA cloning, Petit et al. (1996) established features of the genetic organization of LPP. The gene was found to span a genomic region of over 400 kb. By FISH and Southern blot analyses, Daheron et al. (2001) identified a rearrangement in the mixed lineage leukemia gene due to a novel t(3;11)(q28;q23) translocation in a patient who developed acute myeloid leukemia of the M5 type 3 years after treatment for a follicular lymphoma.

Overview

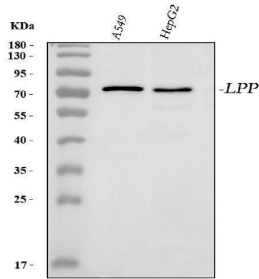
Product Name	Anti-Lipoma-preferred partner LPP Antibody Picoband®
Reactive Species	Human
Description	Boster Bio Anti-Lipoma-preferred partner LPP Antibody catalog # PA2040. Tested in WB applications. This antibody reacts with Human. The brand Picoband indicates this is a premium antibody that guarantees superior quality, high affinity, and strong signals with minimal background in Western blot applications. Only our best-performing antibodies are designated as Picoband, ensuring unmatched performance.
Application	WB
Clonality	Polyclonal
Formulation	Each vial contains 4 mg Trehalose, 0.9 mg NaCl and 0.2 mg Na ₂ HPO ₄ .
Storage Instructions	Store at -20°C for one year from date of receipt. After reconstitution, at 4°C for one month. It can also be aliquotted and stored frozen at -20°C for six months. Avoid repeated freeze-thaw cycles.
Host	Rabbit
Uniprot ID	Q93052

Technical Details

Immunogen	A synthetic peptide corresponding to a sequence in the middle region of human LPP.
Recommended Detection Systems	Boster recommends Enhanced Chemiluminescent Kit with anti-Rabbit IgG (EK1002) for Western blot.
Cross Reactivity	No cross-reactivity with other proteins
Isotype	Rabbit IgG
Form	Lyophilized
Concentration	Adding 0.2 ml of distilled water will yield a concentration of 500 ug/ml.

Purification	Immunogen affinity purified.
Suggested Dilutions	Western blot, 0.1-0.5ug/ml, Human

Anti-Lipoma-preferred partner LPP Antibody Picoband® (PA2040) Images



Western blot analysis of LPP using anti-LPP antibody (PA2040). Electrophoresis was performed on a 5-20% SDS-PAGE gel at 70V (Stacking gel) / 90V (Resolving gel) for 2-3 hours. The sample well of each lane was loaded with 30 ug of sample under reducing conditions. Lane 1: human A549 whole cell lysates, Lane 2: human HepG2 whole cell lysates. After electrophoresis, proteins were transferred to a nitrocellulose membrane at 150 mA for 50-90 minutes. Blocked the membrane with 5% non-fat milk/TBS for 1.5 hour at RT. The membrane was incubated with rabbit anti-LPP antigen affinity purified polyclonal antibody (Catalog # PA2040) at 0.5 ug/mL overnight at 4°C, then washed with TBS-0.1%Tween 3 times with 5 minutes each and probed with a goat anti-rabbit IgG-HRP secondary antibody at a dilution of 1:5000 for 1.5 hour at RT. The signal is developed using an Enhanced Chemiluminescent detection (ECL) kit (Catalog # EK1002) with Tanon 5200 system. A specific band was detected for LPP at approximately 80 kDa. The expected band size for LPP is at 66 kDa.

Submit a product review to Biocompare.com

Submit a review of this product to Biocompare.com to receive a \$20 Amazon.com giftcard! Your reviews help your fellow scientists make the right decisions. Thank you for your contribution.



Anti-Lipoma-preferred partner LPP Antibody

For Research Use Only. Not for use in diagnostic procedures.