

Anti-Phospholipase A2/PLA2G4A Antibody Picoband®

Catalog Number: PA2047

About PLA2G4A

PLA2G4A (Phospholipase A2, Group IVA), is an enzyme that in humans is encoded by the PLA2G4A gene. Tay et al. (1995) mapped the PLA2G4A gene to rat chromosome 13 by PCR-based intercross genotyping and to human 1q25 by fluorescence in situ hybridization. By site-directed mutagenesis and biochemical analysis of the recombinant protein, Sharp et al. (1994) determined that ser228 participates in the catalytic mechanism of cPLA2 and that both the phospholipase A2 and the lysophospholipase activities are catalyzed by the same active site residue (s). PLA2G4A, the cytosolic phospholipase A2, appears to subserve transmembrane signaling responses to extracellular ligands (Skorecki, 1995).

Overview

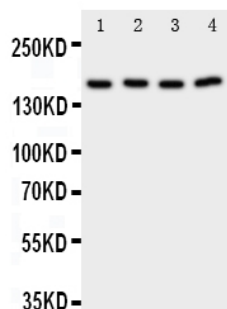
Product Name	Anti-Phospholipase A2/PLA2G4A Antibody Picoband®
Reactive Species	Human, Mouse, Rat
Description	Boster Bio Anti-Phospholipase A2/PLA2G4A Antibody catalog # PA2047. Tested in WB applications. This antibody reacts with Human, Mouse, Rat. The brand Picoband indicates this is a premium antibody that guarantees superior quality, high affinity, and strong signals with minimal background in Western blot applications. Only our best-performing antibodies are designated as Picoband, ensuring unmatched performance.
Application	WB
Clonality	Polyclonal
Formulation	Each vial contains antibody formulated with stabilizing components, 0.9mg NaCl, 0.2mg Na2HPO4, 0.05mg Thimerosal, 0.05mg NaN3. *This antibody is supplied in a stabilized formulation. Compatibility with conjugation reactions depends on the chemistry of the conjugation method used. For conjugation methods that are not compatible with the stabilizing components present in this formulation, a carrier-free antibody format is required.
Storage Instructions	Store at -20°C for one year from date of receipt. After reconstitution, at 4°C for one month. It can also be aliquotted and stored frozen at -20°C for six months. Avoid repeated freeze-thaw cycles.
Host	Rabbit
Uniprot ID	P47712

Technical Details

Immunogen	A synthetic peptide corresponding to a sequence at the C-terminus of human PLA2G4A, different from the related rat and mouse sequences by one amino acid.
Recommended Detection Systems	Boster recommends Enhanced Chemiluminescent Kit with anti-Rabbit IgG (EK1002) for Western blot.
Cross Reactivity	No cross-reactivity with other proteins

Isotype	Rabbit IgG
Form	Lyophilized
Concentration	Adding 0.2 ml of distilled water will yield a concentration of 500 ug/ml.
Purification	Immunogen affinity purified.
Suggested Dilutions	Western blot, 0.1-0.5ug/ml, Human, Rat, Mouse

Anti-Phospholipase A2/PLA2G4A Antibody Picoband® (PA2047) Images



Anti-PLA2G4A antibody, PA2047, Western blotting
Lane 1: Rat Testis Tissue Lysate
Lane 2: Rat Brain Tissue Lysate
Lane 3: A549 Cell Lysate
Lane 4: COLO320 Cell Lysate

Submit a product review to Biocompare.com

Submit a review of this product to Biocompare.com to receive a \$20 Amazon.com giftcard! Your reviews help your fellow scientists make the right decisions. Thank you for your contribution.



Anti-Phospholipase A2/PLA2G4A Antibody

For Research Use Only. Not for use in diagnostic procedures.