

Anti-Glucose Transporter 5 GLUT5/SLC2A5 Antibody Picoband®

Catalog Number: PA2064

About SLC2A5

SLC2A5, also known as GLUT5 (Glucose transporter 5), is a fructose transporter expressed on the apical border of enterocytes in the small intestine. The GLUT5 gene is located on chromosome 1. GLUT5 allows for fructose to be transported from the intestinal lumen into the enterocyte by facilitated diffusion due to fructose's high concentration in the intestinal lumen. GLUT5 is also expressed in skeletal muscle, testis, kidney, fat tissue, and brain. Fructose malabsorption or Dietary Fructose Intolerance is a dietary disability of the small intestine, where the amount of fructose carrier in enterocytes is deficient. In humans the GLUT5 protein is encoded by the SLC2A5 gene.

Overview

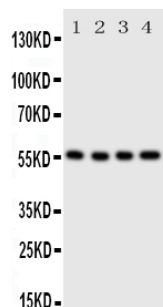
Product Name	Anti-Glucose Transporter 5 GLUT5/SLC2A5 Antibody Picoband®
Reactive Species	Human
Description	Boster Bio Anti-Glucose Transporter 5 GLUT5/SLC2A5 Antibody catalog # PA2064. Tested in WB applications. This antibody reacts with Human. The brand Picoband indicates this is a premium antibody that guarantees superior quality, high affinity, and strong signals with minimal background in Western blot applications. Only our best-performing antibodies are designated as Picoband, ensuring unmatched performance.
Application	WB
Clonality	Polyclonal
Formulation	Each vial contains antibody formulated with stabilizing components, 0.9mg NaCl, 0.2mg Na ₂ HPO ₄ , 0.05mg Thimerosal, 0.05mg NaN ₃ . *This antibody is supplied in a stabilized formulation. Compatibility with conjugation reactions depends on the chemistry of the conjugation method used. For conjugation methods that are not compatible with the stabilizing components present in this formulation, a carrier-free antibody format is required.
Storage Instructions	Store at -20°C for one year from date of receipt. After reconstitution, at 4°C for one month. It can also be aliquotted and stored frozen at -20°C for six months. Avoid repeated freeze-thaw cycles.
Host	Rabbit
Uniprot ID	P22732

Technical Details

Immunogen	A synthetic peptide corresponding to a sequence at the C-terminus of human SLC2A5.
Recommended Detection Systems	Boster recommends Enhanced Chemiluminescent Kit with anti-Rabbit IgG (EK1002) for Western blot.
Cross Reactivity	No cross-reactivity with other proteins

Isotype	Rabbit IgG
Form	Lyophilized
Concentration	Adding 0.2 ml of distilled water will yield a concentration of 500 ug/ml.
Purification	Immunogen affinity purified.
Suggested Dilutions	Western blot, 0.1-0.5ug/ml, Human

Anti-Glucose Transporter 5 GLUT5/SLC2A5 Antibody Picoband® (PA2064) Images



Anti-SLC2A5 antibody, PA2064, Western blotting
Lane 1: U87 Cell Lysate
Lane 2: 293T Cell Lysate
Lane 3: HT1080 Cell Lysate
Lane 4: SW620 Cell Lysate

1 Publications Citing This Product

1. PubMed ID: 27923977, Sex differences in renal and metabolic responses to a high-fructose diet in mice

Visit bosterbio.com/anti-slc2a5-antibody-pa2064-boster.html to see all 1 publications.

Submit a product review to Biocompare.com

Submit a review of this product to Biocompare.com to receive a \$20 Amazon.com giftcard! Your reviews help your fellow scientists make the right decisions. Thank you for your contribution.



Anti-Glucose Transporter 5 GLUT5/SLC2A5 Antibody

For Research Use Only. Not for use in diagnostic procedures.