

Anti-Abl interactor 2 ABI2 Antibody

Catalog Number: PA2068

About ABI2

ABI2 (ABL Interactor 2), is a protein that in humans is encoded by the ABI2 gene. By analysis of a YAC and a BAC, Machado et al. (2000) mapped the ABI2 gene to 2q31-q33. ABI2 possesses a basic N terminus with homology to a homeodomain protein; a central serine-rich region; 3 PEST sequences, which are implicated in susceptibility to protein degradation; several proline-rich stretches; and an acidic C terminus with multiple phosphorylation sites and an SH3 domain. Dai and Pendergast (1995) suggested that the ABI proteins may function to coordinate the cytoplasmic and nuclear functions of the ABL1 tyrosine kinase.

Overview

Product Name	Anti-Abl interactor 2 ABI2 Antibody
Reactive Species	Human, Mouse, Rat
Description	Boster Bio Anti-Abl interactor 2 ABI2 Antibody catalog # PA2068. Tested in WB applications. This antibody reacts with Human, Mouse, Rat.
Application	WB
Clonality	Polyclonal
Formulation	Each vial contains 5mg BSA, 0.9mg NaCl, 0.2mg Na ₂ HPO ₄ , 0.05mg Thimerosal, 0.05mg NaN ₃ .
Storage Instructions	Store at -20°C for one year from date of receipt. After reconstitution, at 4°C for one month. It can also be aliquotted and stored frozen at -20°C for six months. Avoid repeated freeze-thaw cycles.
Host	Rabbit
Uniprot ID	Q9NYB9

Technical Details

Immunogen	A synthetic peptide corresponding to a sequence at the N-terminus of human ABI2, identical to the related mouse and rat sequences.
Predicted Reactive Species	Chicken
Recommended Detection Systems	Boster recommends Enhanced Chemiluminescent Kit with anti-Rabbit IgG (EK1002) for Western blot.
Cross Reactivity	No cross-reactivity with other proteins
Isotype	Rabbit IgG
Form	Lyophilized
Concentration	Adding 0.2 ml of distilled water will yield a concentration of 500 ug/ml.

Purification	Immunogen affinity purified.
Suggested Dilutions	<p>Dilute the sample so that the expected range of concentrations fall within the detection range of this kit.</p> <p>If the expected range of concentration is unknown, a pilot test should be conducted to decide the optimal dilution ratio for your samples.</p> <p>Some PubMed article(s) citing the expression level of this target are as follows:</p> <p>Boster Bio's internal QC testing used:</p> <p>Western blot, 0.1-0.5ug/ml, Human, Mouse, Rat</p>

Anti-Abl interactor 2 ABI2 Antibody (PA2068) Images

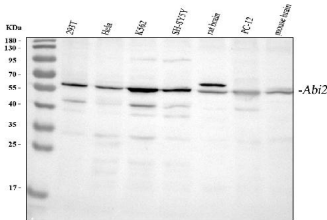


Figure 1. Western blot analysis of ABI2 using anti-ABI2 antibody (PA2068).

Electrophoresis was performed on a 5-20% SDS-PAGE gel at 70V (Stacking gel) / 90V (Resolving gel) for 2-3 hours. The sample well of each lane was loaded with 30 ug of sample under reducing conditions.

Lane 1: human 293T whole cell lysates,
Lane 2: human Hela whole cell lysates,
Lane 3: human K562 whole cell lysates,
Lane 4: human SH-SY5Y whole cell lysates,
Lane 5: rat brain tissue lysates,
Lane 6: rat PC-12 whole cell lysates,
Lane 7: mouse brain tissue lysates.

After electrophoresis, proteins were transferred to a nitrocellulose membrane at 150 mA for 50-90 minutes. Blocked the membrane with 5% non-fat milk/TBS for 1.5 hour at RT. The membrane was incubated with rabbit anti-ABI2 antigen affinity purified polyclonal antibody (Catalog # PA2068) at 0.5 ug/mL overnight at 4°C, then washed with TBS-0.1%Tween 3 times with 5 minutes each and probed with a goat anti-rabbit IgG-HRP secondary antibody at a dilution of 1:5000 for 1.5 hour at RT. The signal is developed using an Enhanced Chemiluminescent detection (ECL) kit (Catalog # EK1002) with Tanon 5200 system. A specific band was detected for ABI2 at approximately 60 kDa. The expected band size for ABI2 is at 60 kDa.

Submit a product review to Biocompare.com

Submit a review of this product to Biocompare.com to receive a \$20 Amazon.com giftcard! Your reviews help your fellow scientists make the right decisions. Thank you for your contribution.



Anti-Abl interactor 2 ABI2 Antibody