

Anti-SPARC-like protein 1 SPARCL1 Antibody Picoband®

Catalog Number: PA2088

About SPARCL1

SPARCL1 (SPARC-Like Protein 1), also known as HEVIN, is a protein that in humans is encoded by the SPARCL1 gene. The cells in high endothelial venules (HEVs) in lymphoid tissues have a plump, almost cuboidal, appearance and support high levels of lymphocyte extravasation from blood, possibly due to the presence of desmosome-like junctions rather than tight junctions in the HEVs. In chronic inflammation, the activated endothelium of nonlymphoid tissues acquires an HEV-like morphology and function. Hevin is highly expressed in HEV and is thought to contribute to the induction or maintenance of features of the HEV endothelium that facilitate lymphocyte migration (Girard and Springer, 1995).

Overview

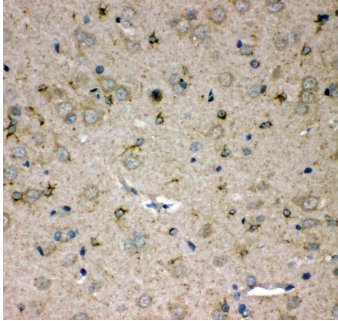
Product Name	Anti-SPARC-like protein 1 SPARCL1 Antibody Picoband®
Reactive Species	Human, Mouse, Rat
Description	Boster Bio Anti-SPARC-like protein 1 SPARCL1 Antibody catalog # PA2088. Tested in IHC, WB applications. This antibody reacts with Human, Mouse, Rat. The brand Picoband indicates this is a premium antibody that guarantees superior quality, high affinity, and strong signals with minimal background in Western blot applications. Only our best-performing antibodies are designated as Picoband, ensuring unmatched performance.
Application	IHC, WB
Clonality	Polyclonal
Formulation	Each vial contains antibody formulated with stabilizing components, 0.9mg NaCl, 0.2mg Na ₂ HPO ₄ , 0.05mg Thimerosal, 0.05mg NaN ₃ . *This antibody is supplied in a stabilized formulation. Compatibility with conjugation reactions depends on the chemistry of the conjugation method used. For conjugation methods that are not compatible with the stabilizing components present in this formulation, a carrier-free antibody format is required.
Storage Instructions	Store at -20°C for one year from date of receipt. After reconstitution, at 4°C for one month. It can also be aliquotted and stored frozen at -20°C for six months. Avoid repeated freeze-thaw cycles.
Host	Rabbit
Uniprot ID	Q14515

Technical Details

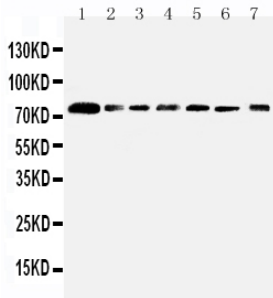
Immunogen	A synthetic peptide corresponding to a sequence at the C-terminus of human SPARCL1, identical to the related mouse and rat sequences.
Recommended Detection Systems	Boster recommends Enhanced Chemiluminescent Kit with anti-Rabbit IgG (EK1002) for Western blot, and HRP Conjugated anti-Rabbit IgG Super Vision Assay Kit (SV0002-1) for IHC(P).
Cross Reactivity	No cross-reactivity with other proteins

Isotype	Rabbit IgG
Form	Lyophilized
Concentration	Adding 0.2 ml of distilled water will yield a concentration of 500 ug/ml.
Purification	Immunogen affinity purified.
Suggested Dilutions	Immunohistochemistry (Paraffin-embedded Section), 0.5-1ug/ml, Human, Rat, Mouse Western blot, 0.1-0.5ug/ml, Human, Mouse, Rat

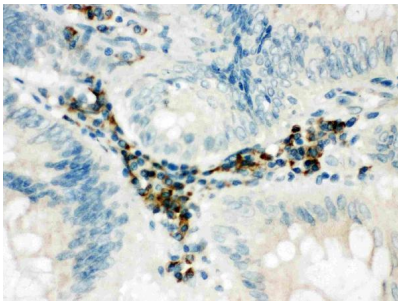
Anti-SPARC-like protein 1 SPARCL1 Antibody Picoband® (PA2088) Images



Anti-SPARCL1 antibody, PA2088, IHC(P)IHC(P): Rat Brain Tissue



Anti-SPARCL1 antibody, PA2088, Western blotting
Lane 1: Rat Lung Tissue Lysate
Lane 2: Mouse Lung Tissue Lysate
Lane 3: PANC Cell Lysate
Lane 4: A549 Cell Lysate
Lane 5: COLO320 Cell Lysate
Lane 6: MCF-7 Cell Lysate
Lane 7: HT1080 Cell Lysate



Anti-SPARCL1 antibody, PA2088, IHC(P)IHC(P): Human Intestinal Cancer Tissue

Submit a product review to [Biocompare.com](https://www.biocompare.com)

Submit a review of this product to [Biocompare.com](https://www.biocompare.com) to receive a \$20 Amazon.com giftcard! Your reviews help your fellow scientists make the right decisions. Thank you for your contribution.



Anti-SPARC-like protein 1 SPARCL1 Antibody

For Research Use Only. Not for use in diagnostic procedures.