

## Anti-Aquaporin 6/AQP6 Antibody Picoband®

Catalog Number: PA2092

### About AQP6

Aquaporin 6, kidney specific is a protein in humans that is encoded by the AQP6 gene. The aquaporins (AQPs) are a family of water-transporting proteins that facilitate osmotically driven water movement across cell plasma membranes. Among the seven human aquaporins cloned to date (AQPs 0-6), genes encoding the four most closely related aquaporins (AQP0, AQP2, AQP5, and AQP6) have been mapped to chromosome band 12q13, suggesting an aquaporin family gene cluster at this locus. Unlike other aquaporins, AQP6 functions not as a water channel but as an anion-selective channel. Single-channel analyses have shown AQP6 to flicker rapidly between closed and open status.

### Overview

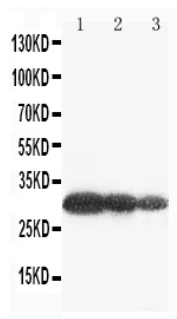
Product Name	Anti-Aquaporin 6/AQP6 Antibody Picoband®
Reactive Species	Human
Description	Boster Bio Anti-Aquaporin 6/AQP6 Antibody catalog # PA2092. Tested in IHC, WB applications. This antibody reacts with Human. The brand Picoband indicates this is a premium antibody that guarantees superior quality, high affinity, and strong signals with minimal background in Western blot applications. Only our best-performing antibodies are designated as Picoband, ensuring unmatched performance.
Application	IHC, WB
Clonality	Polyclonal
Formulation	Each vial contains antibody formulated with stabilizing components, 0.9mg NaCl, 0.2mg Na <sub>2</sub> HPO <sub>4</sub> , 0.05mg Thimerosal, 0.05mg NaN <sub>3</sub> . *This antibody is supplied in a stabilized formulation. Compatibility with conjugation reactions depends on the chemistry of the conjugation method used. For conjugation methods that are not compatible with the stabilizing components present in this formulation, a carrier-free antibody format is required.
Storage Instructions	Store at -20°C for one year from date of receipt. After reconstitution, at 4°C for one month. It can also be aliquotted and stored frozen at -20°C for six months. Avoid repeated freeze-thaw cycles.
Host	Rabbit
Uniprot ID	Q13520

### Technical Details

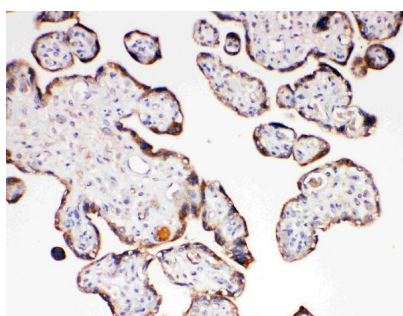
Immunogen	A synthetic peptide corresponding to a sequence at the C-terminus of human Aquaporin 6.
Recommended Detection Systems	Boster recommends Enhanced Chemiluminescent Kit with anti-Rabbit IgG (EK1002) for Western blot, and HRP Conjugated anti-Rabbit IgG Super Vision Assay Kit (SV0002-1) for IHC(P).
Cross Reactivity	No cross-reactivity with other proteins

Isotype	Rabbit IgG
Form	Lyophilized
Concentration	Adding 0.2 ml of distilled water will yield a concentration of 500 ug/ml.
Purification	Immunogen affinity purified.
Suggested Dilutions	Immunohistochemistry (Paraffin-embedded Section), 0.5-1ug/ml, Human Western blot, 0.1-0.5ug/ml, Human

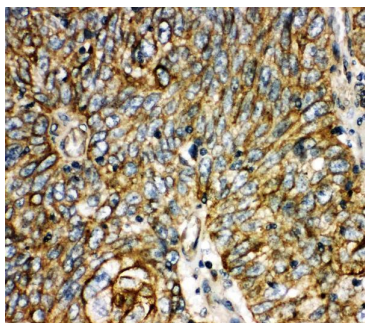
## Anti-Aquaporin 6/AQP6 Antibody Picoband® (PA2092) Images



Anti-Aquaporin 6 antibody, PA2092, Western blotting Lane 1:  
U87 Cell Lysate Lane 2: COLO320 Cell Lysate Lane 3: MCF-7  
Cell Lysate



Anti-Aquaporin 6 antibody, PA2092, IHC(P)IHC(P): Human  
Placenta Tissue



Anti-Aquaporin 6 antibody, PA2092, IHC(P)IHC(P): Human  
Lung Cancer Tissue

### Submit a product review to Biocompare.com

Submit a review of this product to Biocompare.com to receive a \$20 Amazon.com giftcard! Your reviews help your fellow scientists make the right decisions. Thank you for your contribution.



Anti-Aquaporin 6/AQP6 Antibody

For Research Use Only. Not for use in diagnostic procedures.