

Anti-Bcl-2-related protein A1 Bcl2A1 Antibody Picoband®

Catalog Number: PA2102

About BCL2A1

Bcl-2-related protein A1 (BCL2A1), is the human homolog of the murine A1, and maps to chromosome 15q24.3. The BCL2A1 gene has also been referred to as BCL2L5, BFL1, and GRS. Bfl-1 protein suppresses apoptosis induced by the p53 tumor suppressor protein in a manner similar to other Bcl-2 family members such as Bcl-2, Bcl-xL and EBV-BHRF1. In addition, the bfl-1 gene cooperates efficiently with the Ela oncogene in transformation of primary rodent epithelial cells. The human bfl-1 gene may play an important role in carcinogenesis.

Overview

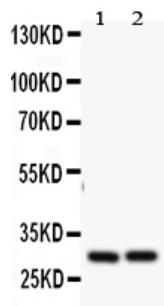
Product Name	Anti-Bcl-2-related protein A1 Bcl2A1 Antibody Picoband®
Reactive Species	Human
Description	Boster Bio Anti-Bcl-2-related protein A1 Bcl2A1 Antibody catalog # PA2102. Tested in WB applications. This antibody reacts with Human. The brand Picoband indicates this is a premium antibody that guarantees superior quality, high affinity, and strong signals with minimal background in Western blot applications. Only our best-performing antibodies are designated as Picoband, ensuring unmatched performance.
Application	WB
Clonality	Polyclonal
Formulation	Each vial contains antibody formulated with stabilizing components, 0.9mg NaCl, 0.2mg Na2HPO4, 0.05mg Thimerosal, 0.05mg NaN3. *This antibody is supplied in a stabilized formulation. Compatibility with conjugation reactions depends on the chemistry of the conjugation method used. For conjugation methods that are not compatible with the stabilizing components present in this formulation, a carrier-free antibody format is required.
Storage Instructions	Store at -20°C for one year from date of receipt. After reconstitution, at 4°C for one month. It can also be aliquotted and stored frozen at -20°C for six months. Avoid repeated freeze-thaw cycles.
Host	Rabbit
Uniprot ID	Q16548

Technical Details

Immunogen	A synthetic peptide corresponding to a sequence at the N-terminus of human Bcl2A1.
Recommended Detection Systems	Boster recommends Enhanced Chemiluminescent Kit with anti-Rabbit IgG (EK1002) for Western blot.
Cross Reactivity	No cross-reactivity with other proteins
Isotype	Rabbit IgG

Form	Lyophilized
Concentration	Adding 0.2 ml of distilled water will yield a concentration of 500 ug/ml.
Purification	Immunogen affinity purified.
Suggested Dilutions	Western blot, 0.1-0.5ug/ml, Human

Anti-Bcl-2-related protein A1 Bcl2A1 Antibody Picoband® (PA2102) Images



Anti-Bcl2A1 antibody, PA2102, Western blotting
All lanes:
Anti Bcl2A1(PA2102) at 0.5ug/ml
Lane 1: HELA Whole Cell Lysate at 40ug
Lane 2: JURKAT Whole Cell Lysate at 40ug
Predicted bind size: 30KD
Observed bind size: 30KD

Submit a product review to Biocompare.com

Submit a review of this product to Biocompare.com to receive a \$20 Amazon.com giftcard! Your reviews help your fellow scientists make the right decisions. Thank you for your contribution.



Anti-Bcl-2-related protein A1 Bcl2A1 Antibody

For Research Use Only. Not for use in diagnostic procedures.