

Anti-Stefin B/CSTB Antibody Picoband®

Catalog Number: PA2106

About CSTB

Cystatin B (CSTB), also called STFB, is a small protein that is a member of the superfamily of cysteine protease inhibitors. It has been isolated from human spleen and liver and its amino acid sequence has been fully determined. The cystatin B gene is located on 21q22.3. It is widely distributed and is localized mostly intracellularly, but has been found extracellularly. The protein is able to form a dimer stabilized by noncovalent forces, inhibiting papain and cathepsins I, H and B. Its role is thought to be as a protector against the proteinases leaking from lysosomes. A cystatin B multiprotein complex might have a specific cerebellar function, and that the loss of this function might contribute to the etiopathogenesis of EPM1. Upon differentiation to myotubes, CSTB becomes excluded from the nucleus and lysosomes, suggesting that the subcellular distribution of CSTB is dependent on the differentiation status of the cell.

Overview

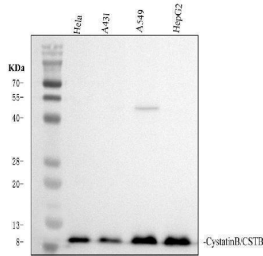
Product Name	Anti-Stefin B/CSTB Antibody Picoband®
Reactive Species	Human
Description	Boster Bio Anti-Stefin B/CSTB Antibody catalog # PA2106. Tested in IHC, WB applications. This antibody reacts with Human. The brand Picoband indicates this is a premium antibody that guarantees superior quality, high affinity, and strong signals with minimal background in Western blot applications. Only our best-performing antibodies are designated as Picoband, ensuring unmatched performance.
Application	IHC, WB
Clonality	Polyclonal
Formulation	Each vial contains antibody formulated with stabilizing components, 0.9mg NaCl, 0.2mg Na ₂ HPO ₄ , 0.01mg NaN ₃ . *This antibody is supplied in a stabilized formulation. Compatibility with conjugation reactions depends on the chemistry of the conjugation method used. For conjugation methods that are not compatible with the stabilizing components present in this formulation, a carrier-free antibody format is required.
Storage Instructions	Store at -20°C for one year from date of receipt. After reconstitution, at 4°C for one month. It can also be aliquotted and stored frozen at -20°C for six months. Avoid repeated freeze-thaw cycles.
Host	Rabbit
Uniprot ID	P04080

Technical Details

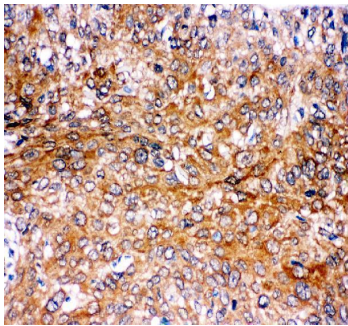
Immunogen	A synthetic peptide corresponding to a sequence in the middle region of human Stefin B.
Recommended Detection Systems	Boster recommends Enhanced Chemiluminescent Kit with anti-Rabbit IgG (EK1002) for Western

	blot, and HRP Conjugated anti-Rabbit IgG Super Vision Assay Kit (SV0002-1) for IHC(P).
Cross Reactivity	No cross-reactivity with other proteins
Isotype	Rabbit IgG
Form	Lyophilized
Concentration	Adding 0.2 ml of distilled water will yield a concentration of 500 ug/ml.
Purification	Immunogen affinity purified.
Suggested Dilutions	Western blot, 0.1-0.5ug/ml, Human Immunohistochemistry (Paraffin-embedded Section), 2-5ug/ml, Human

Anti-Stefin B/CSTB Antibody Picoband® (PA2106) Images



Western blot analysis of CSTB using anti-CSTB antibody (PA2106). Electrophoresis was performed on a 13% SDS-PAGE gel at 80V (Stacking gel) / 120V (Resolving gel) for 2 hours. The sample well of each lane was loaded with 30 ug of sample under reducing conditions. Lane 1: human HeLa whole cell lysates, Lane 2: human A431 whole cell lysates, Lane 3: human A549 whole cell lysates, Lane 4: human HepG2 whole cell lysates. After electrophoresis, proteins were transferred to a nitrocellulose membrane at 150 mA for 50-90 minutes. Blocked the membrane with 5% non-fat milk/TBS for 1.5 hour at RT. The membrane was incubated with rabbit anti-CSTB antigen affinity purified polyclonal antibody (PA2106) at 0.5 ug/mL overnight at 4°C, then washed with TBS-0.1%Tween 3 times with 5 minutes each and probed with a goat anti-rabbit IgG-HRP secondary antibody (Catalog # BA1054) at a dilution of 1:5000 for 1.5 hour at RT. The signal is developed using an ECL Plus Western Blotting Substrate (Catalog # AR1196-200) with Tanon 5200 system. A specific band was detected for CSTB at approximately 11 kDa. The expected band size for CSTB is at 11 kDa.



IHC analysis of CSTB using anti-CSTB antibody (PA2106). CSTB was detected in a paraffin-embedded section of human cervical cancer tissue. Heat mediated antigen retrieval was performed in EDTA buffer (pH 8.0, epitope retrieval solution). The tissue section was blocked with 10% goat serum. The tissue section was then incubated with 2 ug/ml rabbit anti-CSTB Antibody (PA2106) overnight at 4°C. Peroxidase Conjugated Goat Anti-rabbit IgG was used as secondary antibody and incubated for 30 minutes at 37°C. The tissue section was developed using HRP Conjugated Rabbit IgG Super Vision Assay Kit (Catalog # SV0002) with DAB as the chromogen.

Submit a product review to [Biocompare.com](https://www.biocompare.com)

Submit a review of this product to [Biocompare.com](https://www.biocompare.com) to receive a \$20 Amazon.com giftcard! Your reviews help your fellow scientists make the right decisions. Thank you for your contribution.



Anti-Stefin B/CSTB Antibody

For Research Use Only. Not for use in diagnostic procedures.