

## Anti-Smad1 Antibody

Catalog Number: PA2114

### About Smad1

Mothers against decapentaplegic homolog 1 also known as SMAD family member 1 or SMAD1 is a protein that in humans is encoded by the SMAD1 gene. SMAD1 belongs to the SMAD, a family of proteins similar to the gene products of the Drosophila gene "mothers against decapentaplegic" (Mad) and the C. elegans gene Sma. The gene was assigned to human chromosome 4q31.21. SMAD proteins are signal transducers and transcriptional modulators that mediate multiple signaling pathways.

### Overview

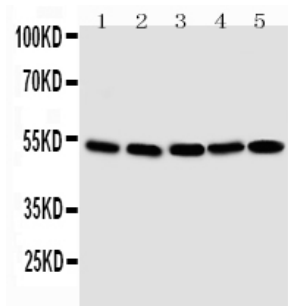
Product Name	Anti-Smad1 Antibody
Reactive Species	Human, Mouse, Rat
Description	Boster Bio Anti-Smad1 Antibody catalog # PA2114. Tested in IHC, ICC, WB applications. This antibody reacts with Human, Mouse, Rat.
Application	IHC, ICC, WB
Clonality	Polyclonal
Formulation	Each vial contains 5mg BSA, 0.9mg NaCl, 0.2mg Na2HPO4, 0.05mg Thimerosal, 0.05mg NaN3.
Storage Instructions	Store at -20°C for one year from date of receipt. After reconstitution, at 4°C for one month. It can also be aliquotted and stored frozen at -20°C for six months. Avoid repeated freeze-thaw cycles.
Host	Rabbit
Uniprot ID	P70340

### Technical Details

Immunogen	A synthetic peptide corresponding to a sequence at the C-terminus of mouse Smad1, different from the related rat sequence by one amino acid, and different from the related human sequence by two amino acids.
Predicted Reactive Species	Hamster
Recommended Detection Systems	Boster recommends Enhanced Chemiluminescent Kit with anti-Rabbit IgG (EK1002) for Western blot, and HRP Conjugated anti-Rabbit IgG Super Vision Assay Kit (SV0002-1) for IHC(P) and ICC.
Cross Reactivity	No cross-reactivity with other proteins
Isotype	Rabbit IgG
Form	Lyophilized
Concentration	Adding 0.2 ml of distilled water will yield a concentration of 500 ug/ml.

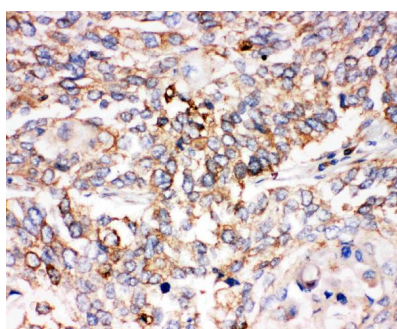
Purification	Immunogen affinity purified.
Suggested Dilutions	<p>Dilute the sample so that the expected range of concentrations fall within the detection range of this kit.</p> <p>If the expected range of concentration is unknown, a pilot test should be conducted to decide the optimal dilution ratio for your samples.</p> <p>Some PubMed article(s) citing the expression level of this target are as follows:</p> <p>Boster Bio's internal QC testing used:</p> <p>Immunocytochemistry , 0.5-1ug/ml, Human, -</p> <p>Immunohistochemistry (Paraffin-embedded Section), 0.5-1ug/ml, Human, Rat, Mouse, By Heat</p> <p>Western blot, 0.1-0.5ug/ml, Human, Mouse, Rat</p>

## Anti-Smad1 Antibody (PA2114) Images



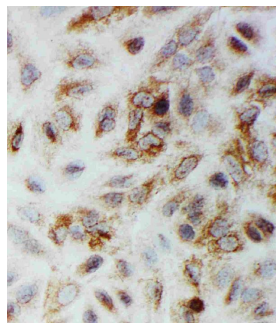
Anti-Smad1 antibody, PA2114, Western blotting

Lane 1: SMMC Cell Lysate  
Lane 2: K562 Cell Lysate  
Lane 3: HT1080 Cell Lysate  
Lane 4: HELA Cell Lysate  
Lane 5: JURKAT Cell Lysate



Anti-Smad1 antibody, PA2114, IHC(P)

IHC(P): Human Lung Cancer Tissue



Anti-Smad1 antibody, PA2114, ICC

ICC: A549 Cell

## Submit a product review to Biocompare.com

Submit a review of this product to Biocompare.com to receive a \$20 Amazon.com giftcard! Your reviews help your fellow scientists make the right decisions. Thank you for your contribution.



Anti-Smad1 Antibody