

Anti-Cyclin-dependent kinase 6 Cdk6 Antibody Picoband®

Catalog Number: PA2125-2

About Cdk6

Cell division protein kinase 6, also called Plstire, is an enzyme that in humans is encoded by the CDK6 gene. The protein encoded by this gene is a member of the cyclin-dependent protein kinase (CDK) family. Radiation hybrid analysis and inclusion within a mapped clone place the CDK6 gene at 7q21. Serine/threonine-protein kinase involved in the control of the cell cycle and differentiation and promotes G1/S transition. This gene also involved in initiation and maintenance of cell cycle exit during cell differentiation. It prevents cell proliferation and regulates negatively cell differentiation, but is required for the proliferation of specific cell types. CDK6 also plays a role in promoting the proliferation of beta-cells in pancreatic islets of Langerhans.

Overview

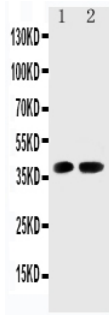
Product Name	Anti-Cyclin-dependent kinase 6 Cdk6 Antibody Picoband®
Reactive Species	Human, Mouse, Rat
Description	Boster Bio Anti-Cyclin-dependent kinase 6 Cdk6 Antibody catalog # PA2125-2. Tested in WB applications. This antibody reacts with Human, Mouse, Rat. The brand Picoband indicates this is a premium antibody that guarantees superior quality, high affinity, and strong signals with minimal background in Western blot applications. Only our best-performing antibodies are designated as Picoband, ensuring unmatched performance.
Application	WB
Clonality	Polyclonal
Formulation	Each vial contains antibody formulated with stabilizing components, 0.9mg NaCl, 0.2mg Na2HPO4, 0.05mg Thimerosal, 0.05mg NaN3. *This antibody is supplied in a stabilized formulation. Compatibility with conjugation reactions depends on the chemistry of the conjugation method used. For conjugation methods that are not compatible with the stabilizing components present in this formulation, a carrier-free antibody format is required.
Storage Instructions	Store at -20°C for one year from date of receipt. After reconstitution, at 4°C for one month. It can also be aliquotted and stored frozen at -20°C for six months. Avoid repeated freeze-thaw cycles.
Host	Rabbit
Uniprot ID	Q64261

Technical Details

Immunogen	A synthetic peptide corresponding to a sequence at the C-terminus of mouse Cdk6, identical to the related rat sequence, and different from the related human sequence by four amino acids.
Recommended Detection Systems	Boster recommends Enhanced Chemiluminescent Kit with anti-Rabbit IgG (EK1002) for Western blot.

Cross Reactivity	No cross-reactivity with other proteins
Isotype	Rabbit IgG
Form	Lyophilized
Concentration	Adding 0.2 ml of distilled water will yield a concentration of 500 ug/ml.
Purification	Immunogen affinity purified.
Suggested Dilutions	Western blot, 0.1-0.5ug/ml, Human, Rat, Mouse

Anti-Cyclin-dependent kinase 6 Cdk6 Antibody Picoband® (PA2125-2) Images



Anti-Cdk6 antibody, PA2125-2, Western blotting Lane 1: Rat Testis Tissue Lysate Lane 2: Rat Lung Tissue Lysate

3 Publications Citing This Product

1. PubMed ID: 25734831, Ren J, Huang Q, Xu Y, Yang M, Yang J, Hu K. Anticancer Drugs. 2015 Jul;26(6):599-611. Doi: 10.1097/Cad.0000000000000224. Isoflavone Lupiwighteone Induces Cytotoxic, Apoptotic, And Antiangiogenic Activities In Du-145 Prostate Cancer Cells.
2. PubMed ID: 26822763, Long noncoding RNA NEAT1 promotes laryngeal squamous cell cancer through regulating miR-107/CDK6 pathway
3. PubMed ID: 25431082, Zhou R, Lu Z, Liu K, Guo J, Liu J, Zhou Y, Yang J, Mi M, Xu H. Curr Cancer Drug Targets. 2015;14(9):860-71. Platycodin D Induces Tumor Growth Arrest By Activating Foxo3A Expression In Prostate Cancer In Vitro And In Vivo.

Visit bosterbio.com/anti-cdk6-antibody-pa2125-2-boster.html to see all 3 publications.

Submit a product review to Biocompare.com

Submit a review of this product to Biocompare.com to receive a \$20 Amazon.com giftcard! Your reviews help your fellow scientists make the right decisions. Thank you for your contribution.



Anti-Cyclin-dependent kinase 6 Cdk6 Antibody

For Research Use Only. Not for use in diagnostic procedures.