

Anti-Macrophage metalloelastase MMP12 Antibody Picoband®

Catalog Number: PA2146

About MMP12

Matrix metalloproteinase-12 (MMP12), also known as MME or ME, is an enzyme that in humans is encoded by the MMP12 gene. The gene is part of a cluster of MMP genes which localize to chromosome 11q22.2. It is thought that the protein encoded by this gene is cleaved at both ends to yield the active enzyme, but this processing has not been fully described. The enzyme degrades soluble and insoluble elastin. It may play a role in aneurysm formation and studies in mice suggest a role in the development of emphysema. This gene may be involved in tissue injury and remodeling.

Overview

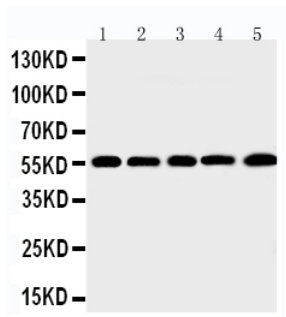
Product Name	Anti-Macrophage metalloelastase MMP12 Antibody Picoband®
Reactive Species	Human
Description	Boster Bio Anti-Macrophage metalloelastase MMP12 Antibody catalog # PA2146. Tested in WB applications. This antibody reacts with Human. The brand Picoband indicates this is a premium antibody that guarantees superior quality, high affinity, and strong signals with minimal background in Western blot applications. Only our best-performing antibodies are designated as Picoband, ensuring unmatched performance.
Application	WB
Clonality	Polyclonal
Formulation	Each vial contains antibody formulated with stabilizing components, 0.9mg NaCl, 0.2mg Na ₂ HPO ₄ , 0.05mg Thimerosal, 0.05mg NaN ₃ . *This antibody is supplied in a stabilized formulation. Compatibility with conjugation reactions depends on the chemistry of the conjugation method used. For conjugation methods that are not compatible with the stabilizing components present in this formulation, a carrier-free antibody format is required.
Storage Instructions	Store at -20°C for one year from date of receipt. After reconstitution, at 4°C for one month. It can also be aliquotted and stored frozen at -20°C for six months. Avoid repeated freeze-thaw cycles.
Host	Rabbit
Uniprot ID	P39900

Technical Details

Immunogen	A synthetic peptide corresponding to a sequence at the C-terminus of human MMP12.
Recommended Detection Systems	Boster recommends Enhanced Chemiluminescent Kit with anti-Rabbit IgG (EK1002) for Western blot.
Cross Reactivity	No cross-reactivity with other proteins
Isotype	Rabbit IgG

Form	Lyophilized
Concentration	Adding 0.2 ml of distilled water will yield a concentration of 500 ug/ml.
Purification	Immunogen affinity purified.
Suggested Dilutions	Western blot, 0.1-0.5ug/ml, Human

Anti-Macrophage metalloelastase MMP12 Antibody Picoband® (PA2146) Images



Anti-MMP12 antibody, PA2146, Western blotting
Lane 1: SMMC Cell Lysate
Lane 2: HEPA Cell Lysate
Lane 3: HELA Cell Lysate
Lane 4: K562 Cell Lysate
Lane 5: MCF-7 Cell Lysate

Submit a product review to Biocompare.com

Submit a review of this product to Biocompare.com to receive a \$20 Amazon.com giftcard! Your reviews help your fellow scientists make the right decisions. Thank you for your contribution.



Anti-Macrophage metalloelastase MMP12 Antibody

For Research Use Only. Not for use in diagnostic procedures.