

Anti-Laminin 2 alpha/LAMA2 Antibody Picoband®

Catalog Number: PA2160

About LAMA2

Laminin, alpha-2, also known as LAMA2, is a protein that in humans is encoded by the LAMA2 gene. This gene is mapped to 6q22.33. Laminin, an extracellular protein, is a major component of the basement membrane. It is thought to mediate the attachment, migration, and organization of cells into tissues during embryonic development by interacting with other extracellular matrix components. It is composed of three subunits, alpha, beta, and gamma, which are bound to each other by disulfide bonds into a cross-shaped molecule. This gene encodes the alpha 2 chain, which constitutes one of the subunits of laminin 2 (merosin) and laminin 4 (s-merosin). Mutations in this gene have been identified as the cause of congenital merosin-deficient muscular dystrophy. Two transcript variants encoding different proteins have been found for this gene.

Overview

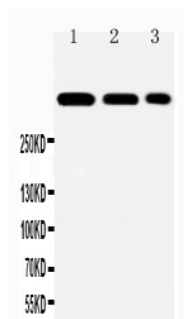
Product Name	Anti-Laminin 2 alpha/LAMA2 Antibody Picoband®
Reactive Species	Human, Mouse, Rat
Description	Boster Bio Anti-Laminin 2 alpha/LAMA2 Antibody catalog # PA2160. Tested in WB applications. This antibody reacts with Human, Mouse, Rat. The brand Picoband indicates this is a premium antibody that guarantees superior quality, high affinity, and strong signals with minimal background in Western blot applications. Only our best-performing antibodies are designated as Picoband, ensuring unmatched performance.
Application	WB
Clonality	Polyclonal
Formulation	Each vial contains antibody formulated with stabilizing components, 0.9mg NaCl, 0.2mg Na ₂ HPO ₄ , 0.05mg Thimerosal, 0.05mg NaN ₃ . *This antibody is supplied in a stabilized formulation. Compatibility with conjugation reactions depends on the chemistry of the conjugation method used. For conjugation methods that are not compatible with the stabilizing components present in this formulation, a carrier-free antibody format is required.
Storage Instructions	Store at -20°C for one year from date of receipt. After reconstitution, at 4°C for one month. It can also be aliquotted and stored frozen at -20°C for six months. Avoid repeated freeze-thaw cycles.
Host	Rabbit
Uniprot ID	P24043

Technical Details

Immunogen	A synthetic peptide corresponding to a sequence at the N-terminus of human Laminin 2 alpha, identical to the related mouse sequence, and different from the related rat sequence by one amino acid.
Recommended Detection Systems	Boster recommends Enhanced Chemiluminescent Kit with anti-Rabbit IgG (EK1002) for Western

	blot.
Cross Reactivity	No cross-reactivity with other proteins
Isotype	Rabbit IgG
Form	Lyophilized
Concentration	Adding 0.2 ml of distilled water will yield a concentration of 500 ug/ml.
Purification	Immunogen affinity purified.
Suggested Dilutions	Western blot, 0.1-0.5ug/ml, Human, Mouse, Rat

Anti-Laminin 2 alpha/LAMA2 Antibody Picoband® (PA2160) Images



Anti-Laminin 2 alpha antibody, PA2160, Western blotting
Lane 1: HELA Cell Lysate
Lane 2: A549 Cell Lysate
Lane 3: PANC Cell Lysate

13 Publications Citing This Product

1. PubMed ID: 23856441, Xu L, Zheng N, He Q, Li R, Zhang K, Liang T. *Phytomedicine*. 2013 Oct 15;20(13):1172-9. Doi: 10.1016/J.Phymed.2013.06.008. Epub 2013 Jul 13. Puerarin, Isolated From *Pueraria Lobata* (Willd.), Protects Against Hepatotoxicity Via Specific Inhibition O...
2. PubMed ID: 25063144, Lin Cy, Li Lt, Su Wt. *Mater Sci Eng C Mater Biol Appl*. 2014 Sep;42:474-8. Doi: 10.1016/J.Msec.2014.05.063. Epub 2014 Jun 6. Three Dimensional Chitosan Scaffolds Influence The Extra Cellular Matrix Expression In Schwann Cells.
3. PubMed ID: 24697670, Liang S, Li Hc, Wang Yx, Wu Ss, Cai Yj, Cui Hl, Yang Yp, Ya J. *Dev Growth Differ*. 2014 May;56(4):276-92. Doi: 10.1111/Dgd.12129. Epub 2014 Apr 3. Pulmonary Endoderm, Second Heart Field And The Morphogenesis Of Distal Outflow Tract In Mouse Embryon...

Visit bosterbio.com/anti-laminin-2-alpha-antibody-pa2160-boster.html to see all 13 publications.

Submit a product review to Biocompare.com

Submit a review of this product to Biocompare.com to receive a \$20 Amazon.com giftcard! Your reviews help your fellow scientists make the right decisions. Thank you for your contribution.



Anti-Laminin 2 alpha/LAMA2 Antibody

For Research Use Only. Not for use in diagnostic procedures.