

Anti-EAAT3/SLC1A1 Antibody Picoband®

Catalog Number: PA2164-2

About Slc1a1

Solute carrier family 1 member 1, also called SLC1A1, is a protein that in humans is encoded by the SLC1A1 gene. By Southern analysis of a panel of human/rodent somatic cell hybrids and by fluorescence in situ hybridization (FISH), this gene is mapped to 9p24.2. This gene encodes a member of the high-affinity glutamate transporters that play an essential role in transporting glutamate across plasma membranes. In brain, these transporters are crucial in terminating the postsynaptic action of the neurotransmitter glutamate, and in maintaining extracellular glutamate concentrations below neurotoxic levels. This transporter also transports aspartate, and mutations in this gene are thought to cause dicarboxylic amino aciduria, also known as glutamate-aspartate transport defect.

Overview

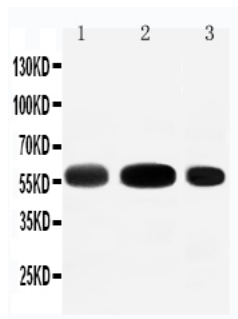
Product Name	Anti-EAAT3/SLC1A1 Antibody Picoband®
Reactive Species	Mouse, Rat
Description	Boster Bio Anti-EAAT3/SLC1A1 Antibody catalog # PA2164-2. Tested in WB applications. This antibody reacts with Mouse, Rat. The brand Picoband indicates this is a premium antibody that guarantees superior quality, high affinity, and strong signals with minimal background in Western blot applications. Only our best-performing antibodies are designated as Picoband, ensuring unmatched performance.
Application	WB
Clonality	Polyclonal
Formulation	Each vial contains antibody formulated with stabilizing components, 0.9mg NaCl, 0.2mg Na2HPO4, 0.05mg Thimerosal, 0.05mg NaN3. *This antibody is supplied in a stabilized formulation. Compatibility with conjugation reactions depends on the chemistry of the conjugation method used. For conjugation methods that are not compatible with the stabilizing components present in this formulation, a carrier-free antibody format is required.
Storage Instructions	Store at -20°C for one year from date of receipt. After reconstitution, at 4°C for one month. It can also be aliquotted and stored frozen at -20°C for six months. Avoid repeated freeze-thaw cycles.
Host	Rabbit
Uniprot ID	P51906

Technical Details

Immunogen	A synthetic peptide corresponding to a sequence at the N-terminus of mouse EAAT3, identical to the related rat sequence.
Recommended Detection Systems	Boster recommends Enhanced Chemiluminescent Kit with anti-Rabbit IgG (EK1002) for Western blot.

Cross Reactivity	No cross-reactivity with other proteins
Isotype	Rabbit IgG
Form	Lyophilized
Concentration	Adding 0.2 ml of distilled water will yield a concentration of 500 ug/ml.
Purification	Immunogen affinity purified.
Suggested Dilutions	Western blot, 0.1-0.5ug/ml, Mouse, Rat

Anti-EAAT3/SLC1A1 Antibody Picoband® (PA2164-2) Images



Anti-EAAT3 antibody, PA2164-2, Western blotting
Lane 1: Rat Liver Tissue Lysate
Lane 2: Rat Heart Tissue Lysate
Lane 3: HEPA Cell Lysate

Submit a product review to Biocompare.com

Submit a review of this product to Biocompare.com to receive a \$20 Amazon.com giftcard! Your reviews help your fellow scientists make the right decisions. Thank you for your contribution.



Anti-EAAT3/SLC1A1 Antibody

For Research Use Only. Not for use in diagnostic procedures.