

## Anti-Glucose Transporter 8/SLC2A8 Antibody Picoband®

Catalog Number: PA2165

### About Slc2a8

Solute carrier family 2, facilitated glucose transporter member 8, also known as SLC2A8, is the eighth member of glucose transporter superfamily. It is characterized by the presence of two leucine residues in its N-terminal intracellular domain, which influences intracellular trafficking. This gene is mapped to 9q33.3. Based on sequence comparison, the glucose transporters are grouped into three classes and this gene is a member of class II. It may act as the insulin-regulated facilitative glucose transporter. This gene binds cytochalasin B in a glucose-inhibitable manner. The binds seems to be a dual-specific sugar transporter as it is inhibitable by fructose.

### Overview

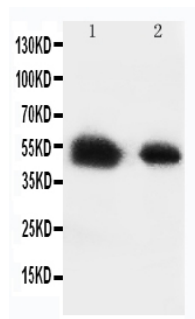
Product Name	Anti-Glucose Transporter 8/SLC2A8 Antibody Picoband®
Reactive Species	Human, Mouse, Rat
Description	Boster Bio Anti-Glucose Transporter 8/SLC2A8 Antibody catalog # PA2165. Tested in IHC, WB applications. This antibody reacts with Human, Mouse, Rat. The brand Picoband indicates this is a premium antibody that guarantees superior quality, high affinity, and strong signals with minimal background in Western blot applications. Only our best-performing antibodies are designated as Picoband, ensuring unmatched performance.
Application	IHC, WB
Clonality	Polyclonal
Formulation	Each vial contains antibody formulated with stabilizing components, 0.9mg NaCl, 0.2mg Na <sub>2</sub> HPO <sub>4</sub> , 0.05mg Thimerosal, 0.05mg NaN <sub>3</sub> . *This antibody is supplied in a stabilized formulation. Compatibility with conjugation reactions depends on the chemistry of the conjugation method used. For conjugation methods that are not compatible with the stabilizing components present in this formulation, a carrier-free antibody format is required.
Storage Instructions	Store at -20°C for one year from date of receipt. After reconstitution, at 4°C for one month. It can also be aliquotted and stored frozen at -20°C for six months. Avoid repeated freeze-thaw cycles.
Host	Rabbit
Uniprot ID	Q9JIF3

### Technical Details

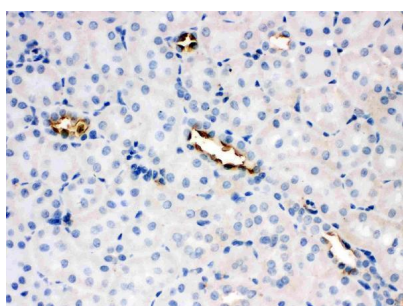
Immunogen	A synthetic peptide corresponding to a sequence at the C-terminus of mouse Glucose Transporter 8, different from the related rat sequence by one amino acid, and from the related human sequence by two amino acids.
Recommended Detection Systems	Boster recommends Enhanced Chemiluminescent Kit with anti-Rabbit IgG (EK1002) for Western blot, and HRP Conjugated anti-Rabbit IgG Super Vision Assay Kit (SV0002-1) for IHC(P).

Cross Reactivity	No cross-reactivity with other proteins
Isotype	Rabbit IgG
Form	Lyophilized
Concentration	Adding 0.2 ml of distilled water will yield a concentration of 500 ug/ml.
Purification	Immunogen affinity purified.
Suggested Dilutions	Immunohistochemistry (Paraffin-embedded Section), 0.5-1ug/ml, Human, Rat, Mouse Western blot, 0.1-0.5ug/ml, Human, Rat, Mouse

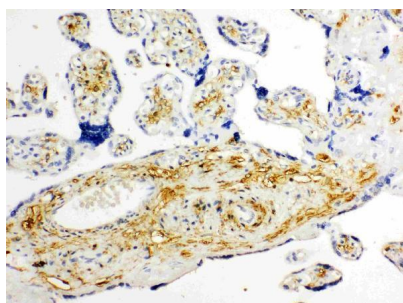
## Anti-Glucose Transporter 8/SLC2A8 Antibody Picoband® (PA2165) Images



Anti-Glucose Transporter 8 antibody, PA2165, Western blotting  
Lane 1: Rat Testis Tissue Lysate  
Lane 2: Human Placenta Tissue Lysate



Anti-Glucose Transporter 8 antibody, PA2165, IHC(P)  
Rat Kidney Tissue



Anti-Glucose Transporter 8 antibody, PA2165, IHC(P)  
Human Placenta Tissue

### Submit a product review to Biocompare.com

Submit a review of this product to Biocompare.com to receive a \$20 Amazon.com giftcard! Your reviews help your fellow scientists make the right decisions. Thank you for your contribution.



Anti-Glucose Transporter 8/SLC2A8 Antibody

For Research Use Only. Not for use in diagnostic procedures.